

SIT-LOCK® self locking elements

Advantages of SIT-LOCK® on the shaft-hub connection compared with traditional systems

Easy assembly and disassembly

Both actions take place by locking and unlocking the clamping screws with common tools.

The use of a torque wrench is only necessary when a more precise torque is required.

Superior holding power

The action of the clamping cones creates shaft clamping torque superior to a normal keyed hub.

Overload protection

When the pre-set torque is exceeded SIT-LOCK® will slip, preventing the connected elements from being broken.

Note: SIT-LOCK® units are not friction couplings so, excessive slip will cause damage.

Easy adjustment

Combining the SIT-LOCK® design of smooth cone action with superior holding power, the hub can be clamped at any position along a shaft, eliminating the need for lock washers, spacers, stop rings, etc.

Precision location

With the SIT-LOCK® smooth cone action, the SIT-LOCK® is ideal for clamping cams, timing devices, and indexing mechanisms accurately and precisely.

Temperature

-20 °C ÷ 150 °C

Unlimited use possibilities

SIT-LOCK® units are suitable to connect any type of hub (flywheels, chainwheels, gears, levers, pulleys, eccentrics, coupling, etc).

Various solutions in stock

Available in stock in 10 different types, SIT-LOCK® units can be utilized in a varied range of industrial applications

Order form

SIT-LOCK®	CAL	1	F25 /50
CAL: SIT-LOCK® self locking element			
Type			
Shaft diameter			
External diameter (hub bore)			

Performances

Given values of transmissible torque, axial force, and pressure between shaft and hub are valid for a lubricated installation (friction coefficient $\mu=0,12$). Both hub and shaft, as well as locking unit's contact surfaces and screws, should be lubricated.

Locking unit and screws are supplied already oiled.

Always consider tolerances and roughness values per single locking unit.

To avoid decrease of locking unit performances, do not use molybdenum disulfide lubricant or other substances that drastically reduce coefficient of friction.

Design procedure

For a correct functioning of SIT-LOCK®, the transmissible torque M_T (stated in this catalogue) must always exceed the maximum torque in operation. So, in selecting the SIT-LOCK® dimensions, you must consider the start up torque could be even 4 times larger than the nominal one.

The transmissible axial forces (F_{ax}) given in the tables are valid for cases where there is no torque. If it is necessary to transmit both a torque and an axial force (ex. helical gear), the following formula must be used:

$$M_T \geq \sqrt{M_a^2 + \left(\frac{F_{ax} \cdot d}{2000}\right)^2} \quad [\text{Nm}]$$

where:

M_a = maximum torque to be transmitted [Nm]

F_{ax} = axial force in operation [N]

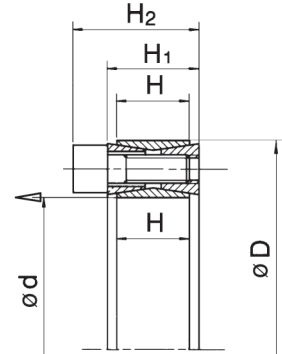
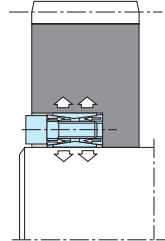
d = shaft diameter [mm]



SIT-LOCK® 1 - Not Self-Centering

SITLOCK® locking assembly unit consists of four pieces with two inside double-cone rings joined through a set of tightening

screws. It is recommended for medium torques. Although it is not self centering, it can be easily assembled and disassembled.



Installation

Carefully clean contact surfaces of shaft and hub. Then, lightly oil both surfaces with standard mineral oil. Position the SIT-LOCK® on the shaft and into the hub machined bore. Align them as required by the application. Gradually and uniformly tighten the locking screws to the tightening torque (Ms).

You must tighten the screws in diametrically opposite sequence in stages:

- hand tighten the screws until the surfaces are in contact

- check the position of the hub on the shaft
- tighten the screws to half the value of the tightening torque (Ms) stated in the catalogue
- repeat the operation until the tightening torque is reached using the dynamometric screw-driver
- check every locking screw to insure it has been tightened to the specific tightening torque

Do not use lubricant like "Molykote" or molybdenum disulfide based oils.

Removal

SIT-LOCK® 1 are not self-locking. The inner rings are tapered so that they spring apart when all screws are released. Gradually loosen opposite locking screws in stages until the SIT-LOCK® is released. DO NOT remove the screws completely. In case it should jam, it is necessary to lightly hammer the released screws, so the back cone ring is pushed backwards.

Note: To reuse the locking element, carefully oil the screws and the tapered surfaces, then follow installation instructions.

Percentering hub selection

In order to perform an accurate centering, it is necessary to machine with accuracy a precentering hub section which

should be longer than $\geq 2 \times H_2$.

Axial displacement

During the Installation of the unit no axial displacement of the hubs on the shaft occurs.

Maximum allowable roughness
Rt 16 µm
Maximum recommended tolerance
shaft h 11 - hub H 11

Calculation of (M_T) with more SIT-LOCK®1	
1 unit	M _T = M _T table
2 units	M _T = M _T table x 1,9
3 units	M _T = M _T table x 2,7
4 units	M _T = M _T table x 3,55

SIT-LOCK® 1

Dimensions [mm]				Performances		Pressure [N/mm ²]		Clamping screws (DIN 912 - 12,9)		
d x D	H	H ₁	H ₂	M _T [Nm]	F _{ax} [kN]	p _w	p _n	N°	Type	M _S [Nm]
20 x 47	17	20	26	288	29	225	96	8	M 6	15
22 x 47	17	20	26	317	29	204	96	8	M 6	15
24 x 50	17	20	26	345	29	187	90	8	M 6	15
25 x 50	17	20	26	360	29	180	90	8	M 6	15
28 x 55	17	20	26	498	36	198	101	10	M 6	15
30 x 55	17	20	26	533	36	185	101	10	M 6	15
32 x 60	17	20	26	676	42	206	110	12	M 6	15
35 x 60	17	20	26	739	42	188	110	12	M 6	15
38 x 65	17	20	26	928	49	201	117	14	M 6	15
40 x 65	17	20	26	977	49	190	117	14	M 6	15
42 x 75	20	24	32	1.587	76	239	134	12	M 8	37
45 x 75	20	24	32	1.701	76	223	134	12	M 8	37
48 x 80	20	24	32	1.814	76	209	125	12	M 8	37
50 x 80	20	24	32	1.889	76	200	125	12	M 8	37
55 x 85	20	24	32	2.397	87	210	136	14	M 8	37
60 x 90	20	24	32	2.615	87	193	128	14	M 8	37
65 x 95	20	24	32	3.204	99	201	138	16	M 8	37
70 x 110	24	28	38	4.589	131	207	132	14	M10	70
75 x 115	24	28	38	4.917	131	193	126	14	M10	70
80 x 120	24	28	38	5.245	131	181	121	14	M10	70
85 x 125	24	28	38	6.290	148	192	131	16	M10	70
90 x 130	24	28	38	6.660	148	182	126	16	M10	70
95 x 135	24	28	38	7.819	165	192	135	18	M10	70
100 x 145	26	33	45	9.703	194	198	137	14	M12	127
110 x 155	26	33	45	10.673	194	180	128	14	M12	127
120 x 165	26	33	45	13.262	221	188	137	16	M12	127
130 x 180	34	38	50	17.850	275	165	119	20	M12	127
140 x 190	34	38	50	21.089	301	168	124	22	M12	127
150 x 200	34	38	50	24.586	328	171	128	24	M12	127
160 x 210	34	38	50	28.343	354	173	132	26	M12	127
170 x 225	38	44	58	33.541	395	162	122	22	M14	195
180 x 235	38	44	58	38.636	429	166	128	24	M14	195
190 x 250	46	52	66	47.337	498	151	115	28	M14	195
200 x 260	46	52	66	53.261	533	154	118	30	M14	195
220 x 285	50	56	72	68.790	625	151	116	26	M16	300
240 x 305	50	56	72	86.127	718	159	125	30	M16	300
260 x 325	50	56	72	105.229	809	165	132	34	M16	300
280 x 355	60	66	84	128.456	918	145	114	32	M18	410
300 x 375	60	66	84	154.066	1.027	151	121	36	M18	410
320 x 405	72	78	98	211.342	1.321	152	120	36	M20	590
340 x 425	72	78	98	224.551	1.321	143	115	36	M20	590
360 x 455	84	90	112	289.095	1.606	141	111	36	M22	790
380 x 475	84	90	112	305.156	1.606	133	107	36	M22	790
400 x 495	84	90	112	321.217	1.606	127	102	36	M22	790
420 x 515	84	90	112	372.740	1.775	133	109	40	M22	790
440 x 545	96	102	126	447.549	2.034	128	103	40	M24	1.000
460 x 565	96	102	126	467.892	2.034	122	99	40	M24	1.000
480 x 585	96	102	126	511.273	2.130	123	101	42	M24	1.000
500 x 605	96	102	126	556.488	2.226	123	102	44	M24	1.000
520 x 630	96	102	126	591.149	2.274	121	100	45	M24	1.000
540 x 650	96	102	126	613.885	2.274	116	97	45	M24	1.000
560 x 670	96	102	126	676.552	2.416	119	100	48	M24	1.000
580 x 690	96	102	126	728.173	2.511	120	101	50	M24	1.000
600 x 710	96	102	126	753.282	2.511	116	98	50	M24	1.000
620 x 730	96	102	126	807.649	2.605	116	99	52	M24	1.000
640 x 750	96	102	126	863.810	2.699	117	99	54	M24	1.000
660 x 770	96	102	126	921.758	2.793	117	100	56	M24	1.000
680 x 790	96	102	126	949.690	2.793	113	98	56	M24	1.000
700 x 810	96	102	126	1.042.991	2.980	118	102	60	M24	1.000
720 x 830	96	102	126	1.072.791	2.980	114	99	60	M24	1.000
740 x 850	96	102	126	1.136.994	3.073	115	100	62	M24	1.000
760 x 870	96	102	126	1.202.959	3.166	115	101	64	M24	1.000
780 x 890	96	102	126	1.252.660	3.212	114	100	65	M24	1.000
800 x 910	96	102	126	1.303.261	3.258	113	99	66	M24	1.000
820 x 930	96	102	126	1.373.654	3.350	113	100	68	M24	1.000
840 x 950	96	102	126	1.445.789	3.442	113	100	70	M24	1.000
860 x 970	96	102	126	1.519.663	3.534	114	101	72	M24	1.000
880 x 990	96	102	126	1.595.268	3.626	114	101	74	M24	1.000
900 x 1010	96	102	126	1.652.075	3.671	113	100	75	M24	1.000

Notes:
Dimensions representing the total length of the hub are indicative; they are calculated according to the geometric rules.

For assemblies requiring larger dimensions, contact our Technical Department.

M_S Screw tightening torque Nm
M_T Transmissible torque moment Nm
F_{ax} Transmissible axial load N

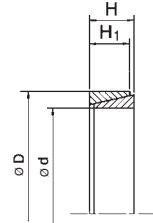
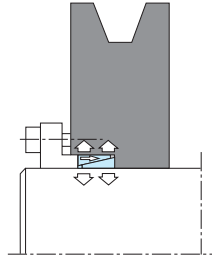
p_w Shaft pressure N/mm²
p_n Hub pressure N/mm²

SIT-LOCK®

SIT-LOCK® 2 - Not Self-Centering

Locking elements consist of one internal and one external tapered rings. They are designed to work in combination with a clamp flange which can be bolted on a hub or shaft depending on application need. The number of locking screws depends on

the torque to be transmitted. SIT-LOCK® 2 requires very small axial installation dimensions. Up to 4 units can be arranged behind each other, allowing high torques to be transmitted.



Note: SIT-LOCK® 2 in slotted execution is available upon request

$$M_T = \frac{(N^{\circ} \text{screws} \cdot P_v) - P_o}{0,54} \cdot 0,12 \cdot \frac{d}{2000}$$

The values of Pv and Ms are stated in the DIN 912 table.

Note:

The values stated in this catalogue are valid for application 1 (see following page).

With applications 2, MT, Fax, pw, pn, are increased by 25%.

Installation

Carefully clean contact surfaces of shaft and hub. Then lightly oil both surfaces with standard mineral oil. Position the SIT-LOCK® on the shaft and into the hub machined bore. Align them as required by the application. Gradually and uniformly tighten the locking screws to the tightening torque (Ms).

You must tighten the screws in diametrically opposite sequence in stages:

- hand tighten the screws until the surfaces are in contact
- carefully check the position of the hub onto the shaft
- tighten the screws to half the value of the tightening torque (Ms) stated in the catalogue

Removal

Gradually loosen opposite clamping screws in stages until the SIT-LOCK® is released. In case it should jam, it is necessary

- repeat the operation until the tightening torque is reached, using the dynamometric screw-driver
- check every locking screw to insure it has been tightened to the specific tightening torque

Make sure the clamping flange is not laying on the hub and the distance between flange and hub is equally spaced.

Do not use lubricant like "Molykote" or molybdenum disulfide based oils.

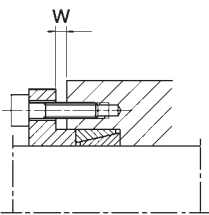
to lightly hammer the hub.

Maximum allowable roughness	
Rt 6 µm	
Maximum recommended tolerance	
shaft h 6 - hub H7 per $\varnothing \leq 40$	
shaft h 8 - hub H8 per $\varnothing \geq 42$	

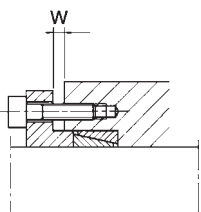
Calculation of (MT) with more SIT-LOCK®2	
1 unit	$M_T = M_T \text{ table}$
2 units	$M_T = M_T \text{ table} \times 1,55$
3 units	$M_T = M_T \text{ table} \times 1,85$
4 units	$M_T = M_T \text{ table} \times 2,02$

Dimensions [mm]			Axial force		Total axial force		Performances		"W" - Number of elements arranged in parallel [mm]				Pressure [N/mm ²]	
d x D	H	H ₁	P ₀ [kN]	P _{tot} [kN]	M _T [Nm]	F _{ax} [kN]	1	2	3	4	P _w	P _n		
6 x 9	4,5	3,7	-	4	3	0,9	2,5	2,5	3,0	4,0	106	71		
7 x 10	4,5	3,7	-	5	4	1,1	2,5	2,5	3,0	4,0	114	80		
8 x 11	4,5	3,7	-	6	5	1,3	2,5	2,5	3,0	4,0	119	87		
9 x 12	4,5	3,7	8	15	7	1,6	2,5	2,5	3,0	4,0	130	98		
10 x 13	4,5	3,7	7	16	10	2,0	2,5	2,5	3,0	4,0	143	110		
12 x 15	4,5	3,7	7	16	12	2,0	2,5	2,5	3,0	4,0	119	96		
13 x 16	4,5	3,7	7	16	14	2,1	2,5	2,5	3,0	4,0	116	95		
14 x 18	6,3	5,3	11	26	23	3,3	3,5	3,5	4,5	5,5	119	93		
15 x 19	6,3	5,3	11	27	27	3,6	3,5	3,5	4,5	5,5	120	95		
16 x 20	6,3	5,3	10	27	30	3,8	3,5	3,5	4,5	5,5	118	95		
17 x 21	6,3	5,3	10	27	33	3,9	3,5	3,5	4,5	5,5	114	92		
18 x 22	6,3	5,3	9	33	48	5,3	3,5	3,5	4,5	5,5	147	121		
19 x 24	6,3	5,3	13	33	43	4,6	3,5	3,5	4,5	5,5	120	95		
20 x 25	6,3	5,3	12	33	47	4,7	3,5	3,5	4,5	5,5	117	93		
22 x 26	6,3	5,3	9	34	61	5,6	3,5	3,5	4,5	5,5	126	107		
24 x 28	6,3	5,3	8	34	68	5,7	3,5	3,5	4,5	5,5	119	102		
25 x 30	6,3	5,3	10	37	75	6,0	3,5	3,5	4,5	5,5	120	100		
28 x 32	6,3	5,3	8	40	101	7,2	3,5	3,5	4,5	5,5	129	113		
30 x 35	6,3	5,3	9	40	105	7,0	3,5	3,5	4,5	5,5	116	100		
32 x 36	6,3	5,3	8	44	128	8,0	3,5	3,5	4,5	5,5	125	112		
35 x 40	7,0	6,0	10	54	171	9,8	3,5	3,5	4,5	5,5	124	108		
36 x 42	7,0	6,0	12	57	181	10,1	3,5	3,5	4,5	5,5	124	106		
38 x 44	7,0	6,0	11	60	207	10,9	3,5	3,5	4,5	5,5	127	109		
40 x 45	8,0	6,6	14	70	249	12,5	3,5	4,5	5,5	6,5	125	111		
42 x 48	8,0	6,6	16	75	278	13,2	3,5	4,5	5,5	6,5	127	111		
45 x 52	10,0	8,6	28	110	409	18,2	3,5	4,5	5,5	6,5	124	108		
48 x 55	10,0	8,6	25	110	455	19,0	3,5	4,5	5,5	6,5	122	106		
50 x 57	10,0	8,6	24	110	480	19,2	3,5	4,5	5,5	6,5	118	104		
55 x 62	10,0	8,6	22	120	601	21,8	3,5	4,5	5,5	6,5	123	109		
56 x 64	12,0	10,4	30	150	750	26,8	3,5	4,5	5,5	7,0	122	107		
60 x 68	12,0	10,4	28	160	883	29,4	3,5	4,5	5,5	7,0	125	110		
63 x 71	12,0	10,4	27	170	1.005	31,9	3,5	4,5	5,5	7,0	129	115		
65 x 73	12,0	10,4	26	170	1.044	32,1	3,5	4,5	5,5	7,0	126	112		
70 x 79	14,0	12,2	31	210	1.392	39,8	3,5	5,0	6,5	7,5	124	109		
71 x 80	14,0	12,2	31	220	1.491	42,0	3,5	5,0	6,5	7,5	129	114		
75 x 84	14,0	12,2	35	230	1.628	43,4	3,5	5,0	6,5	7,5	126	112		
80 x 91	17,0	15,0	48	300	2.240	56,0	4,0	6,0	6,5	8,0	124	109		
85 x 96	17,0	15,0	46	320	2.593	61,0	4,0	6,0	6,5	8,0	127	112		
90 x 101	17,0	15,0	44	330	2.864	63,6	4,0	6,0	6,5	8,0	125	111		
95 x 106	17,0	15,0	41	340	3.153	66,4	4,0	6,0	6,5	8,0	124	111		
100 x 114	21,0	18,7	61	460	4.433	88,7	5,0	6,0	7,0	9,0	126	110		
110 x 124	21,0	18,7	66	475	4.999	90,9	5,0	6,0	7,0	9,0	117	104		
120 x 134	21,0	18,7	60	475	5.529	92,2	5,0	6,0	7,0	9,0	109	98		
130 x 148	28,0	25,3	96	700	8.720	134	5,0	7,0	9,0	11,0	108	95		
140 x 158	28,0	25,3	89	740	10.127	145	6,0	7,0	9,0	11,0	108	96		
150 x 168	28,0	25,3	85	790	11.750	157	6,0	7,0	8,0	11,0	110	98		
160 x 178	28,0	25,3	79	950	15.492	194	6,0	7,0	9,0	11,0	127	114		
170 x 191	33,0	30,0	117	1.180	20.071	236	7,0	9,0	10,0	12,0	123	109		
180 x 201	33,0	30,0	111	1.200	21.774	242	7,0	9,0	10,0	12,0	119	106		
190 x 211	33,0	30,0	105	1.300	25.228	266	7,0	9,0	10,0	12,0	124	111		
200 x 224	38,0	34,8	134	1.600	32.573	326	7,0	8,0	11,0	13,0	124	111		
220 x 244	38,0	34,8	142	1.700	37.185	345	7,0	9,0	11,0	13,0	124	111		
320 x 360	65,0	59,0	292	3.492	113.950	710	10,0	15,0	20,0	25,0	100	100		

Application 1



Application 2



Design of the screws center distance (l)

- a) For applications with screws clamped on the hub:
l = D + 12 + Ø screw [mm]
- b) For applications with screws clamped on the shaft:
l = d - 12 - Ø screw [mm]

Design of the flange thickness (Sf)

- a) For applications with screws quality 12,9 (DIN 912):
Sf = Ø screw x 1,8 [mm]
- b) For applications with screws quality 8,8 (DIN 912):
Sf = Ø screw x 1,3 [mm]

Note: flanges are available on request

Notes:

Dimensions representing the total length of the hub are indicative; they are calculated according to the geometric rules.

For assemblies requiring larger dimensions, contact our Technical Department.

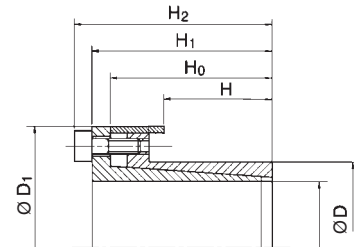
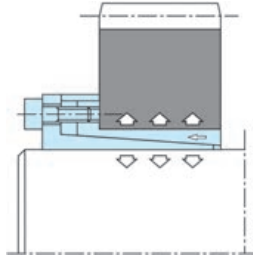
M _S	Screw tightening torque	Nm
M _T	Transmissible torque moment	Nm
F _{ax}	Transmissible axial load	N
p _w	Shaft pressure	N/mm ²
p _n	Hub pressure	N/mm ²

SIT-LOCK® 3 - Self-Centering Low Profile

Locking assembly with single taper design. Consists of two tapered rings and a spacer. It has minimum overall dimensions in virtue of the reduced thickness of the cones. SIT-LOCK® 3 is suitable for the applications where small hubs are

requested. It is recommended for mid-high torques and is self centering.

During the installation of the unit no axial displacement of the hubs on the shaft occurs.



Installation

Carefully clean contact surfaces of shaft and hub. Then, lightly oil both surfaces with standard mineral oil. Position the SIT-LOCK® on the shaft and into the hub machined bore. Align them as required by the application. Gradually and uniformly tighten the locking screws to the tightening torque (Ms).

You must tighten the screws in diametrically opposite sequence in stages:

- hand tighten the screws until the surfaces are in contact

- carefully check the position of the hub on the shaft
- tighten the screws to half the value of the tightening torque (Ms) stated in the catalogue
- repeat the operation until the tightening torque is reached using the dynamometric screw-driver
- check every locking screw to insure it has been tightened to the specific tightening torque

Do not use lubricant like "Molykote" or molybdenum disulfide based oils.

Removal

Gradually loosen all locking screws. Remove and transfer the screws into the releasing tapped holes and tighten them until the SIT-LOCK® is released.

Note: To reuse the locking element, carefully oil the screws and the conical surfaces, then follow installation instructions.

Concentricity

For self-centering locking assemblies the clamping element has a centering effect and the concentricity error can be considered 0.02-0.04 mm.

Maximum allowable roughness
Rt 16 µm
Maximum recommended tolerance
shaft h 8 - hub H 8

Dimensions [mm]						Performances		Pressure [N/mm ²]		Clamping screws (DIN 912 - 12,9)		
d x D	H	H ₀	H ₁	H ₂	D ₁	M _T [Nm]	F _{ax} [kN]	P _w	P _n	N°	Type	M _s [Nm]
6 x 14	10	18,5	21	24	25	12	4	180	77	3	M 3	2
7 x 15	12	22	25	29	27	26	7	234	109	3	M 4	4,9
8 x 15	12	22	25	29	27	30	7	204	109	3	M 4	4,9
9 x 16	14	23	26	30	28	44	10	208	117	4	M 4	4,9
10 x 16	14	23	26	30	28	49	10	187	117	4	M 4	4,9
11 x 18	14	23	26	30	32	54	10	170	104	4	M 4	4,9
12 x 18	14	23	26	30	32	59	10	156	104	4	M 4	4,9
13 x 23	14	23	26	30	38	64	10	144	81	4	M 4	4,9
14 x 23	14	23	26	30	38	69	10	134	81	4	M 4	4,9
15 x 24	16	29	36	42	45	128	17	189	118	3	M 6	17
16 x 24	16	29	36	42	45	136	17	177	118	3	M 6	17
17 x 26	18	31	38	44	47	193	23	197	129	4	M 6	17
18 x 26	18	31	38	44	47	205	23	186	129	4	M 6	17
19 x 27	18	31	38	44	49	216	23	176	124	4	M 6	17
20 x 28	18	31	38	44	50	227	23	168	120	4	M 6	17
22 x 32	25	38	45	51	54	250	23	110	75	4	M 6	17
24 x 34	25	38	45	51	56	273	23	101	71	4	M 6	17
25 x 34	25	38	45	51	56	284	23	97	71	4	M 6	17
28 x 39	25	38	45	51	61	478	34	129	93	6	M 6	17
30 x 41	25	38	45	51	62	512	34	121	88	6	M 6	17
32 x 43	25	38	45	51	65	546	34	113	84	6	M 6	17
35 x 47	32	45	52	58	69	796	45	108	80	8	M 6	17
38 x 50	32	45	52	58	72	864	45	99	75	8	M 6	17
40 x 53	32	45	52	58	75	910	45	94	71	8	M 6	17
42 x 55	32	45	52	58	78	955	45	90	69	8	M 6	17
45 x 59	45	62	70	78	86	1.891	84	110	84	8	M 8	41
48 x 62	45	62	70	78	87	2.017	84	103	80	8	M 8	41
50 x 65	45	62	70	78	92	2.101	84	99	76	8	M 8	41
55 x 71	55	72	80	88	98	2.600	95	83	64	9	M 8	41
60 x 77	55	72	80	88	104	2.836	95	76	59	9	M 8	41
65 x 84	55	72	80	88	111	3.073	95	70	54	9	M 8	41
70 x 90	65	86	96	106	119	5.254	150	88	68	9	M10	83
75 x 95	65	86	96	106	126	5.630	150	82	64	9	M10	83
80 x 100	65	86	96	106	131	8.006	200	102	82	12	M10	83
85 x 106	65	86	96	106	137	8.507	200	96	77	12	M10	83
90 x 112	65	86	96	106	144	9.007	200	91	73	12	M10	83
95 x 120	65	86	96	106	149	11.092	234	100	79	14	M10	83
100 x 125	65	86	96	106	154	15.012	300	123	98	18	M10	83
110 x 140	90	114	128	140	180	16.029	291	78	61	12	M12	145
120 x 155	90	114	128	140	198	17.486	291	72	55	12	M12	145
130 x 165	90	114	128	140	208	25.257	389	88	69	16	M12	145

Notes:

Dimensions representing the total length of the hub are indicative; they are calculated according to the geometric rules.

For assemblies requiring larger dimensions, contact our Technical Department.

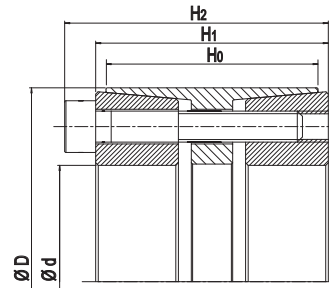
It is possible to decrease the screws tightening torque M_s by up to 40% of the value stated in the table. Consequently, M_T, F_{ax}, P_w and P_n will decrease proportionally.

M _s	Screw tightening torque	Nm
M _T	Transmissible torque moment	Nm
F _{ax}	Transmissible axial load	N
p _w	Shaft pressure	N/mm ²
p _n	Hub pressure	N/mm ²

SIT-LOCK® 4 - Self-Centering Heavy Duty

It is suitable for high torques and is self-centering. Recommended for applications that requires high transmission values and

excellent centering capabilities such as belt drums.



Installation

Carefully clean contact surfaces of shaft and hub. Then, lightly oil both surfaces with standard mineral oil. Position the SIT-LOCK® on the shaft and into the hub machined bore. Align them as required by the application. Gradually and uniformly tighten the locking screws to the tightening torque (Ms).

You must tighten the screws in diametrically opposite sequence in stages:

- hand tighten the screws until the surfaces are in contact

Removal

Gradually loosen the clamping screws. Transfer the screws into the releasing tapped holes and tighten them until the front cone is released. Loosen the clamping screws again. Transfer the clamping screws into the releasing holes of the intermediate ring, and tighten them until the back cone is released.

Concentricity

For self-centering locking assemblies, the clamping element has a centering effect and the concentricity error can be considered 0.02-0.04 mm.

- carefully check the position of the hub on the shaft
- tighten the screws to half the value of the tightening torque (Ms) stated in the catalogue
- repeat the operation until the tightening torque is reached using the dynamometric screw-driver
- check every locking screw to insure it has been tightened to the specific tightening torque

Do not use lubricant like "Molykote" or molybdenum disulfide based oils.

Note: To reuse the locking element, carefully oil the screws and the conical surfaces, then follow installation instructions.

Maximum allowable roughness
Rt 16 µm
Maximum recommended tolerance
shaft h 8 - hub H 8

SIT-LOCK® 4

d x D	Dimensions [mm]			Performances		Pressure [N/mm ²]		Clamping screws (DIN 912 - 12,9)		
	H ₀	H ₁	H ₂	M _T [Nm]	F _{ax} [kN]	p _w	p _n	N°	Type	M _s [Nm]
25 x 50	41	45	51	830	66	172	86	6	M6	17
28 x 55	41	45	51	1.239	89	205	104	8	M6	17
30 x 55	41	45	51	1.328	89	191	104	8	M6	17
35 x 60	41	45	51	1.549	89	164	95	8	M6	17
38 x 65	41	45	51	1.682	89	151	88	8	M6	17
40 x 65	41	45	51	2.213	111	179	110	10	M6	17
42 x 75	41	45	53	3.435	164	252	141	8	M8	41
45 x 75	41	45	53	3.680	164	235	141	8	M8	41
48 x 80	58	62	70	3.926	164	156	94	8	M8	41
50 x 80	58	62	70	4.089	164	150	94	8	M8	41
55 x 85	58	62	70	4.498	164	136	88	8	M8	41
60 x 90	58	62	70	6.134	204	156	104	10	M8	41
65 x 95	58	62	70	6.645	204	144	98	10	M8	41
70 x 110	70	76	86	11.363	325	176	112	10	M10	83
75 x 115	70	76	86	12.174	325	164	107	10	M10	83
80 x 120	70	76	86	15.583	390	185	123	12	M10	83
85 x 125	70	76	86	16.557	390	174	118	12	M10	83
90 x 130	70	76	86	17.531	390	164	114	12	M10	83
95 x 135	70	76	86	18.505	390	155	109	12	M10	83
100 x 145	92	98	110	28.361	567	164	113	12	M12	145
110 x 155	92	98	110	31.197	567	149	106	12	M12	145
120 x 165	92	98	110	39.706	662	159	116	14	M12	145
130 x 180	108	114	128	50.589	778	147	106	12	M14	230
140 x 190	108	114	128	63.560	908	159	117	14	M14	230
150 x 200	108	114	128	77.829	1.038	170	127	16	M14	230
160 x 210	108	114	128	83.017	1.038	159	121	16	M14	230
170 x 225	136	146	162	107.267	1.262	145	109	14	M16	355
180 x 235	136	146	162	129.802	1.442	156	120	16	M16	355
190 x 250	136	146	162	137.014	1.442	148	113	16	M16	355
200 x 260	136	146	162	144.225	1.442	141	108	16	M16	355
220 x 285	136	146	162	198.309	1.803	160	123	20	M16	355
240 x 305	136	146	162	237.971	1.983	161	127	22	M16	355
260 x 325	136	146	162	257.802	1.983	149	119	22	M16	355
280 x 355	138	148	168	393.980	2.814	193	152	20	M20	690
300 x 375	165	177	197	464.334	3.096	166	133	22	M20	690
320 x 405	165	177	197	495.289	3.096	156	123	22	M20	690
340 x 425	165	177	197	574.085	3.377	160	128	24	M20	690
360 x 455	188	202	224	693.598	3.853	151	119	22	M22	930
380 x 475	188	202	224	865.246	4.554	169	135	26	M22	930
400 x 495	188	202	224	910.786	4.554	161	130	26	M22	930

Notes:

Dimensions representing the total length of the hub are indicative; they are calculated according to the geometric rules.

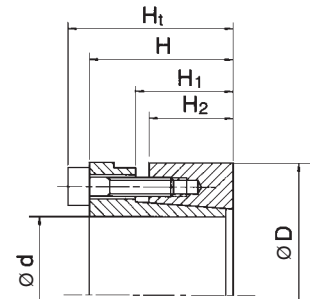
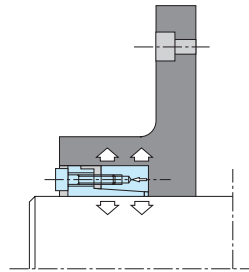
For assemblies requiring larger dimensions, contact our Technical Department.

M _s	Screw tightening torque	Nm
M _T	Transmissible torque moment	Nm
F _{ax}	Transmissible axial load	N
p _w	Shaft pressure	N/mm ²
p _n	Hub pressure	N/mm ²

SIT-LOCK® 5A - Self-Centering without Flange

Locking assembly with single taper design. It is suitable for high torques. Provide good concentricity and self centring. A small axial movement of the hub during the installation operation

may occur. Applications in need of an accurate axial positioning are not recommended with this type of locking assembly.



Installation

Carefully clean contact surfaces of shaft and hub. Then, lightly oil both surfaces with standard mineral oil. Position the SIT-LOCK® on the shaft and into the hub machined bore. Align them as required by the application. Gradually and uniformly tighten the locking screws to the tightening torque (Ms).

You must tighten the screws in diametrically opposite sequence in stages:

- hand tighten the screws until the surfaces are in contact

- carefully check the position of the hub on the shaft
- tighten the screws to half the value of the tightening torque (Ms) stated in the catalogue
- repeat the operation until the tightening torque is reached using the dynamometric screw-driver
- check every locking screw to insure it has been tightened to the specific tightening torque

Do not use lubricant like "Molykote" or molybdenum disulfide based oils.

Removal

Gradually loosen all locking screws. Remove and transfer the screws into the releasing tapped holes and tighten them until the SIT-LOCK® is released.

Note: To reuse the locking element, carefully oil the screws and the conical surfaces, then follow installation instructions.

Concentricity

For self-centering locking assemblies the clamping element has a centering effect and the concentricity error can be considered 0.02-0.04 mm.

Maximum allowable roughness
Rt 16 µm
Maximum recommended tolerance
shaft h 8 - hub H 8

SIT-LOCK® 5A

Dimensions [mm]					Performances		Pressure [N/mm ²]		Clamping screws (DIN 912 - 12,9)		
d x D	H _t	H	H ₁	H ₂	M _T [Nm]	F _{ax} [kN]	p _w	p _n	N°	Type	M _s [Nm]
20 x 47	49	43	30	26	547	55	279	119	6	M6	17
22 x 47	49	43	30	26	602	55	254	119	6	M6	17
24 x 50	49	43	30	26	657	55	233	112	6	M6	17
25 x 50	49	43	30	26	684	55	223	112	6	M6	17
28 x 55	49	43	30	26	766	55	199	101	6	M6	17
30 x 55	49	43	30	26	821	55	186	101	6	M6	17
32 x 60	49	43	30	26	1.313	82	262	140	9	M6	17
35 x 60	49	43	30	26	1.436	82	239	140	9	M6	17
38 x 65	49	43	30	26	1.559	82	220	129	9	M6	17
40 x 65	49	43	30	26	1.641	82	209	129	9	M6	17
42 x 75	60	52	35	30	2.123	101	213	119	6	M8	41
45 x 75	60	52	35	30	2.275	101	199	119	6	M8	41
48 x 80	60	52	35	30	2.426	101	186	112	6	M8	41
50 x 80	60	52	35	30	2.527	101	179	112	6	M8	41
55 x 85	60	52	35	30	4.170	152	244	158	9	M8	41
60 x 90	60	52	35	30	4.549	152	223	149	9	M8	41
65 x 95	60	52	35	30	4.928	152	206	141	9	M8	41
70 x 110	67	57	46	40	6.555	187	177	113	7	M10	83
75 x 115	67	57	46	40	7.023	187	166	108	7	M10	83
80 x 120	67	57	46	40	7.491	187	155	103	7	M10	83
85 x 125	67	57	46	40	9.096	214	167	114	8	M10	83
90 x 130	67	57	46	40	9.631	214	158	109	8	M10	83
95 x 135	67	57	46	40	12.708	268	187	131	10	M10	83
100 x 145	78	66	53	46	13.634	273	157	108	7	M12	145
110 x 155	80	68	52	45	17.931	326	175	124	8	M12	145
120 x 165	80	68	52	45	24.452	408	200	146	10	M12	145
130 x 180	80	68	52	45	31.787	489	222	160	12	M12	145
140 x 190	90	76	58	50	39.141	559	212	156	10	M14	230
150 x 200	90	76	58	50	50.325	671	237	178	12	M14	230
160 x 210	90	76	58	50	53.680	671	222	170	12	M14	230
170 x 225	90	76	58	50	66.540	783	244	185	14	M14	230
180 x 235	90	76	57	50	70.455	783	231	177	14	M14	230

Notes:

Dimensions representing the total length of the hub are indicative; they are calculated according to the geometric rules.

For assemblies requiring larger dimensions, contact our Technical Department.

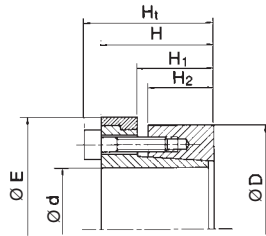
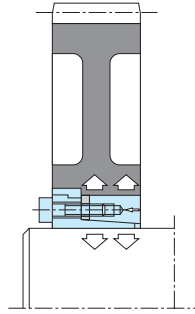
It is possible to decrease the screws tightening torque M_s by up to 40% of the value stated in the table. Consequently, M_T, F_{ax}, P_w and P_n will decrease proportionally.

M _s	Screw tightening torque	Nm
M _T	Transmissible torque moment	Nm
F _{ax}	Transmissible axial load	N
p _w	Shaft pressure	N/mm ²
p _n	Hub pressure	N/mm ²

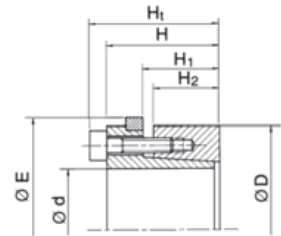
SIT-LOCK® 5B - Self-Centering with Flange

Locking assembly with single taper design. It is suitable for high torques. Provide good concentricity and self centring.

It is recommended for medium torques and is self-centering. The flange design prevent axial movement during installation.



from type 20x47 to 100x145



from type 110x155 to 180x235

Installation

Carefully clean contact surfaces of shaft and hub. Then, lightly oil both surfaces with standard mineral oil. Position the SIT-LOCK® on the shaft and into the hub machined bore. Align them as required by the application. Gradually and uniformly tighten the locking screws to the tightening torque (Ms).

You must tighten the screws in diametrically opposite sequence in stages:

- hand tighten the screws until the surfaces are in contact

- carefully check the position of the hub on the shaft
- tighten the screws to half the value of the tightening torque (Ms) stated in the catalogue
- repeat the operation until the tightening torque is reached using the dynamometric screw-driver
- check every locking screw to insure it has been tightened to the specific tightening torque

Do not use lubricant like "Molykote" or molybdenum disulfide based oils.

Removal

Gradually loosen all locking screws. Remove and transfer the screws into the releasing tapped holes and tighten them until the SIT-LOCK® is released.

Note: To reuse the locking element, carefully oil the screws and the conical surfaces, then follow installation instructions.

Concentricity

For self-centering locking assemblies, the clamping element has a centering effect and the concentricity error can be considered 0.02-0.04 mm.

Max allowable roughness
Rt 16 µm
Maximum recommended tolerance
shaft h 8 - hub H 8

SIT-LOCK® 5B

Dimensions [mm]						Performances		Pressure [N/mm ²]		Clamping screws (DIN 912 - 12,9)		
d x D	H _t	H	H ₁	H ₂	E	M _T [Nm]	F _{ax} [kN]	p _w	p _n	N°	Type	M _s [Nm]
20 x 47	49	43	30	26	53	341	34	174	73	6	M6	17
22 x 47	49	43	30	26	53	375	34	158	73	6	M6	17
24 x 50	49	43	30	26	56	409	34	145	73	6	M6	17
25 x 50	49	43	30	26	56	426	34	139	73	6	M6	17
28 x 55	49	43	30	26	61	478	34	124	73	6	M6	17
30 x 55	49	43	30	26	61	512	34	116	73	6	M6	17
32 x 60	49	43	30	26	66	819	51	163	109	9	M6	17
35 x 60	49	43	30	26	66	895	51	149	109	9	M6	17
38 x 65	49	43	30	26	71	972	51	137	109	9	M6	17
40 x 65	49	43	30	26	71	1.023	51	131	109	9	M6	17
42 x 75	60	52	35	30	81	1.324	63	133	94	6	M8	41
45 x 75	60	52	35	30	81	1.418	63	124	94	6	M8	41
48 x 80	60	52	35	30	86	1.513	63	116	94	6	M8	41
50 x 80	60	52	35	30	86	1.576	63	111	94	6	M8	41
55 x 85	60	52	35	30	91	2.600	95	152	142	9	M8	41
60 x 90	60	52	35	30	96	2.836	95	139	142	9	M8	41
65 x 95	60	52	35	30	102	3.073	95	129	142	9	M8	41
70 x 110	67	57	46	40	117	4.087	117	111	117	7	M10	83
75 x 115	67	57	46	40	122	4.379	117	103	117	7	M10	83
80 x 120	67	57	46	40	127	4.670	117	97	117	7	M10	83
85 x 125	67	57	46	40	132	5.671	133	104	134	8	M10	83
90 x 130	67	57	46	40	137	6.005	133	98	134	8	M10	83
95 x 135	67	57	46	40	142	7.923	167	116	168	10	M10	83
100 x 145	78	66	53	46	153	8.500	170	98	127	7	M12	145
110 x 155	80	68	52	46	165	10.988	200	105	150	8	M12	145
120 x 165	80	68	52	46	175	14.984	250	120	187	10	M12	145
130 x 180	80	68	52	46	188	19.479	300	133	224	12	M12	145
140 x 190	90	76	58	51	199	23.986	343	127	204	10	M14	230
150 x 200	90	76	58	51	209	30.840	411	143	244	12	M14	230
160 x 210	90	76	58	51	219	32.896	411	134	244	12	M14	230
170 x 225	90	76	58	51	234	40.777	480	147	285	14	M14	230
180 x 235	90	76	57	51	244	43.175	480	139	285	14	M14	230

Notes:

Dimensions representing the total length of the hub are indicative; they are calculated according to the geometric rules.

For assemblies requiring larger dimensions, contact our Technical Department.

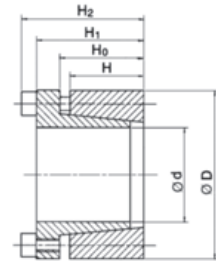
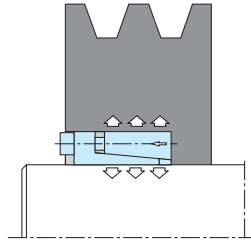
It is possible to decrease the screws tightening torque M_s by up to 40% of the value stated in the table. Consequently, M_T, F_{ax}, P_w and P_n will decrease proportionally.

M _s	Screw tightening torque	Nm
M _T	Transmissible torque moment	Nm
F _{ax}	Transmissible axial load	N
p _w	Shaft pressure	N/mm ²
p _n	Hub pressure	N/mm ²

SIT-LOCK® 6 - Self-Centering without Flange Short Version

Locking assembly with single taper design. Provides good concentricity and is self centering. A small axial movement of the hub during the installation operation may occur.

Applications requiring accurate axial positioning are not recommended with this type of locking assembly. SITLOCK® 6 is suitable for applications with medium torques.



Installation

Carefully clean contact surfaces of shaft and hub. Then, lightly oil both surfaces with standard mineral oil. Position the SIT-LOCK® on the shaft and into the hub machined bore. Align them as required by the application. Gradually and uniformly tighten the locking screws to the tightening torque (Ms).

You must tighten the screws in diametrically opposite sequence in stages:

- hand tighten the screws until the surfaces are in contact

- carefully check the position of the hub on the shaft
- tighten the screws to half the value of the tightening torque (Ms) stated in the catalogue
- repeat the operation until the tightening torque is reached using the dynamometric screw-driver
- check every locking screw to insure it has been tightened to the specific tightening torque

Do not use lubricant like "Molykote" or molybdenum disulfide based oils.

Removal

Gradually loosen all locking screws. Remove and transfer the screws into the releasing tapped holes and tighten them until the SIT-LOCK® is released.

Note: To reuse the locking element, carefully oil the screws and the conical surfaces, then follow installation instructions.

Concentricity

For self-centering locking assemblies, the clamping element has a centering effect and the concentricity error can be considered 0.02-0.04 mm.

Maximum allowable roughness
Rt 16 µm
Maximum recommended tolerance
shaft h 8 - hub H 8

SIT-LOCK® 6

Dimensions [mm]					Performances		Pressure [N/mm ²]		Clamping screws (DIN 912 - 12,9)		
d x D	H	H ₀	H ₁	H ₂	M _T [Nm]	F _{ax} [kN]	p _w	p _n	N°	Type	M _s [Nm]
20 x 47	17	22	28	34	380	38	297	126	5	M6	14
22 x 47	17	22	28	34	419	38	270	126	5	M6	14
24 x 50	17	22	28	34	457	38	247	119	5	M6	14
25 x 50	17	22	28	34	571	46	285	142	6	M6	14
28 x 55	17	22	28	34	639	46	254	130	6	M6	14
30 x 55	17	22	28	34	685	46	237	130	6	M6	14
32 x 60	17	22	28	34	974	61	297	158	8	M6	14
35 x 60	17	22	28	34	1.065	61	271	158	8	M6	14
38 x 65	17	22	28	34	1.157	61	250	146	8	M6	14
40 x 65	17	22	28	34	1.218	61	237	146	8	M6	14
42 x 75	20	26	34	42	2.060	98	310	173	7	M8	35
45 x 75	20	26	34	42	2.207	98	289	173	7	M8	35
48 x 80	20	26	34	42	2.354	98	271	163	7	M8	35
50 x 80	20	26	34	42	2.452	98	260	163	7	M8	35
55 x 85	20	26	34	42	3.082	112	270	175	8	M8	35
60 x 90	20	26	34	42	3.363	112	248	165	8	M8	35
65 x 95	20	26	34	42	4.098	126	257	176	9	M8	35
70 x 110	24	30	40	50	6.240	178	281	179	8	M10	70
75 x 115	24	30	40	50	6.685	178	263	171	8	M10	70
80 x 120	24	30	40	50	7.131	178	246	164	8	M10	70
85 x 125	24	30	40	50	8.524	201	261	177	9	M10	70
90 x 130	24	30	40	50	9.025	201	246	171	9	M10	70
95 x 135	24	30	40	50	10.585	223	259	182	10	M10	70
100 x 145	26	32	44	56	13.045	261	266	184	8	M12	125
110 x 155	26	32	44	56	14.349	261	242	172	8	M12	125
120 x 165	26	32	44	56	17.610	294	250	181	9	M12	125
130 x 180	34	40	54	66	25.437	391	235	170	12	M12	125
140 x 190	34	40	54	68	28.155	402	224	165	9	M14	190
150 x 200	34	40	54	68	33.518	447	232	174	10	M14	190
160 x 210	34	40	54	68	39.327	492	240	183	11	M14	190
170 x 225	44	50	64	78	45.584	536	190	144	12	M14	190
180 x 235	44	50	64	78	48.265	536	180	138	12	M14	190
190 x 250	44	50	64	78	63.683	670	213	162	15	M14	190
200 x 260	44	50	64	78	67.035	670	202	155	15	M14	190

Notes:

Dimensions representing the total length of the hub are indicative; they are calculated according to the geometric rules.

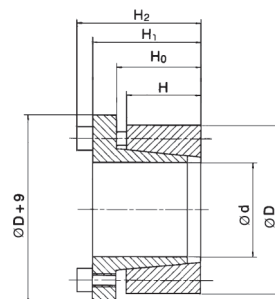
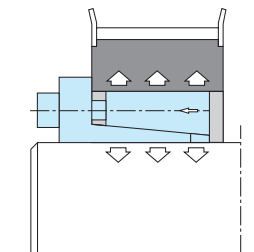
For assemblies requiring larger dimensions, contact our Technical Department.

M _S	Screw tightening torque	Nm
M _T	Transmissible torque moment	Nm
F _{ax}	Transmissible axial load	N
p _w	Shaft pressure	N/mm ²
p _n	Hub pressure	N/mm ²

SIT-LOCK® 7 - Self-Centering with Flange, Short Version

Locking assembly with single taper design. Provides good concentricity and self centering. It is recommended for medium torques and is self-centring.

The flange design prevents axial movement during installation. **It is suitable for applications with medium torques, and need very precise axial positioning.**



Installation

Carefully clean contact surfaces of shaft and hub. Then, lightly oil both surfaces with standard mineral oil. Position the SIT-LOCK® on the shaft and into the hub machined bore. Align them as required by the application. Gradually and uniformly tighten the locking screws to the tightening torque (Ms).

You must tighten the screws in diametrically opposite sequence in stages:

- hand tighten the screws until the surfaces are in contact

- carefully check the position of the hub on the shaft
- tighten the screws to half the value of the tightening torque (Ms) stated in the catalogue
- repeat the operation until the tightening torque is reached using the dynamometric screw-driver
- check every locking screw to insure it has been tightened to the specific tightening torque

Do not use lubricant like "Molykote" or molybdenum disulfide based oils.

Removal

Gradually loosen all locking screws. Remove and transfer the screws into the releasing tapped holes and tighten them until the SIT-LOCK® is released.

Note: To reuse the locking element, carefully oil the screws and the conical surfaces, then follow installation instructions.

Concentricity

For self-centering locking assemblies the clamping element has a centering effect and the concentricity error can be considered 0.02-0.04 mm.

Maximum allowable roughness
Rt 16 µm
Maximum recommended tolerance
shaft h 8 - hub H 8

SIT-LOCK® 7

Dimensions [mm]					Performances		Pressure [N/mm ²]		Clamping screws (DIN 912 - 12.9)		
d x D	H	H ₀	H ₁	H ₂	M _T [Nm]	F _{ax} [kN]	p _w	p _n	N°	Tipo	M _s [Nm]
20 x 47	17	22	28	34	284	28	222	94	5	M6	17
22 x 47	17	22	28	34	313	28	202	94	5	M6	17
24 x 50	17	22	28	34	341	28	185	89	5	M6	17
25 x 50	17	22	28	34	426	34	213	106	6	M6	17
28 x 55	17	22	28	34	478	34	190	97	6	M6	17
30 x 55	17	22	28	34	512	34	177	97	6	M6	17
32 x 60	17	22	28	34	728	45	222	118	8	M6	17
35 x 60	17	22	28	34	796	45	203	118	8	M6	17
38 x 65	17	22	28	34	864	45	187	109	8	M6	17
40 x 65	17	22	28	34	910	45	177	109	8	M6	17
42 x 75	20	26	34	42	1.544	74	232	130	7	M8	41
45 x 75	20	26	34	42	1.655	74	217	130	7	M8	41
48 x 80	20	26	34	42	1.765	74	203	122	7	M8	41
50 x 80	20	26	34	42	1.838	74	195	122	7	M8	41
55 x 85	20	26	34	42	2.311	84	203	131	8	M8	41
60 x 90	20	26	34	42	2.521	84	186	124	8	M8	41
65 x 95	20	26	34	42	3.073	95	193	132	9	M8	41
70 x 110	24	30	40	50	4.670	133	211	134	8	M10	83
75 x 115	24	30	40	50	5.004	133	197	128	8	M10	83
80 x 120	24	30	40	50	5.338	133	184	123	8	M10	83
85 x 125	24	30	40	50	6.380	150	195	133	9	M10	83
90 x 130	24	30	40	50	6.755	150	184	128	9	M10	83
95 x 135	24	30	40	50	7.923	167	194	137	10	M10	83
100 x 145	26	32	44	56	9.714	194	198	137	8	M12	145
110 x 155	26	32	44	56	10.686	194	180	128	8	M12	145
120 x 165	26	32	44	56	13.114	219	186	135	9	M12	145
130 x 180	34	40	54	66	18.943	291	175	126	12	M12	145
140 x 190	34	40	54	68	20.993	300	167	123	9	M14	230
150 x 200	34	40	54	68	24.992	333	173	130	10	M14	230
160 x 210	34	40	54	68	29.324	367	179	136	11	M14	230
170 x 225	44	50	64	78	33.989	400	142	107	12	M14	230
180 x 235	44	50	64	78	35.989	400	134	103	12	M14	230
190 x 250	44	50	64	78	47.485	500	159	121	15	M14	230
200 x 260	44	50	64	78	49.984	500	151	116	15	M14	230

Notes:

Dimensions representing the total length of the hub are indicative; they are calculated according to the geometric rules.

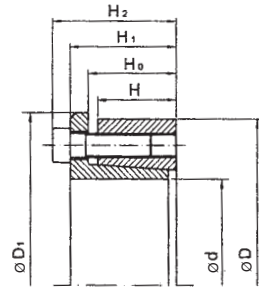
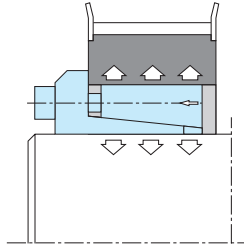
For assemblies requiring larger dimensions, contact our Technical Department.

M _S	Screw tightening torque	Nm
M _T	Transmissible torque moment	Nm
F _{ax}	Transmissible axial load	N
p _w	Shaft pressure	N/mm ²
p _n	Hub pressure	N/mm ²

SIT-LOCK® 8 - Self-Centering - Special Outside Diameters

Locking assembly with single taper design. The flange design prevents axial movement during installation. SIT-LOCK® 8 has a very small axial dimension, is self centering and has been designed to suit various shaft diameters although

the overall dimensions are the same. SIT-LOCK® 8 is recommended for applications with medium torques which need a good axial positioning. The limited number of screws make the installation fast.



Installation

Carefully clean contact surfaces of shaft and hub. Then, lightly oil both surfaces with standard mineral oil. Position the SIT-LOCK® on the shaft and into the hub machined bore. Align them as required by the application. Gradually and uniformly tighten the locking screws to the tightening torque (Ms).

You must tighten the screws in diametrically opposite sequence in stages:

- hand tighten the screws until the surfaces are in contact

- carefully check the position of the hub on the shaft
- tighten the screws to half the value of the tightening torque (Ms) stated in the catalogue
- repeat the operation until the tightening torque is reached using the dynamometric screw-driver
- check every locking screw to insure it has been tightened to the specific tightening torque

Do not use lubricant like "Molykote" or molybdenum disulfide based oils.

Removal

Gradually loosen all locking screws. Remove and transfer the screws into the releasing tapped holes and tighten them until the SIT-LOCK® is released.

Note: To reuse the locking element, carefully oil the screws and the conical surfaces, then follow installation instructions.

Concentricity

For self-centering locking assemblies, the clamping element has a centering effect and the concentricity error can be considered 0.02-0.04 mm.

Maximum allowable roughness
Rt 16 µm
Maximum recommended tolerance
shaft h 8 - hub H 8

SIT-LOCK® 8

Dimensions [mm]						Performances		Pressure [N/mm ²]		Clamping screws (DIN 912 - 12.9)		
d x D	H	H ₀	H ₁	H ₂	D ₁	M _T [Nm]	F _{ax} [kN]	p _w	p _n	N°	Type	M _s [Nm]
14 x 55	17	22	30	38	62	130	19	208	53	3	M8	25
16 x 55	17	22	30	38	62	149	19	182	53	3	M8	25
18 x 55	17	22	30	38	62	168	19	162	53	3	M8	25
19 x 55	17	22	30	38	62	177	19	153	53	3	M8	25
20 x 55	17	22	30	38	62	186	19	145	53	3	M8	25
22 x 55	17	22	30	38	62	288	26	186	74	3	M8	35
24 x 55	17	22	30	38	62	314	26	170	74	3	M8	35
25 x 55	17	22	30	38	62	328	26	164	74	3	M8	35
28 x 55	17	22	30	38	62	441	32	176	89	3	M8	41
30 x 55	17	22	30	38	62	473	32	164	89	3	M8	41
24 x 65	17	23	31	39	72	448	37	243	90	5	M8	30
25 x 65	17	23	31	39	72	467	37	233	90	5	M8	30
28 x 65	17	23	31	39	72	611	44	243	105	5	M8	35
30 x 65	17	23	31	39	72	655	44	227	105	5	M8	35
32 x 65	17	23	31	39	72	699	44	213	105	5	M8	35
35 x 65	17	23	31	39	72	919	53	234	126	5	M8	41
38 x 65	17	23	31	39	72	998	53	216	126	5	M8	41
40 x 65	17	23	31	39	72	1.051	53	205	126	5	M8	41
30 x 80	20	26	34	42	87	785	52	231	87	7	M8	30
32 x 80	20	26	34	42	87	837	52	217	87	7	M8	30
33 x 80	20	26	34	42	87	863	52	210	87	7	M8	30
35 x 80	20	26	34	42	87	1.070	61	232	101	7	M8	35
38 x 80	20	26	34	42	87	1.162	61	213	101	7	M8	35
40 x 80	20	26	34	42	87	1.223	61	203	101	7	M8	35
42 x 80	20	26	34	42	87	1.544	74	232	122	7	M8	41
45 x 80	20	26	34	42	87	1.655	74	217	122	7	M8	41
48 x 80	20	26	34	42	87	1.765	74	203	122	7	M8	41
50 x 80	20	26	34	42	87	1.838	74	195	122	7	M8	41

Notes:

Dimensions representing the total length of the hub are indicative; they are calculated according to the geometric rules.

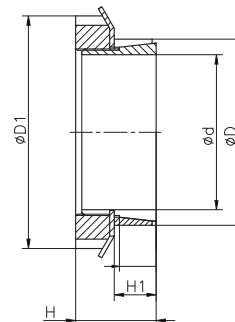
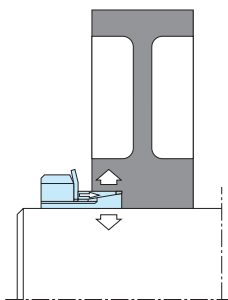
For assemblies requiring larger dimensions, contact our Technical Department.

M _S	Screw tightening torque	Nm
M _T	Transmissible torque moment	Nm
F _{ax}	Transmissible axial load	N
p _w	Shaft pressure	N/mm ²
p _n	Hub pressure	N/mm ²

SIT-LOCK® 9 - Not Self-Centering

Consists of two tapered rings and a lock nut. In virtue of the simple design, very fast assembly/disassembly is allowed.

SIT-LOCK® 9 is suitable for applications with small-medium torques.



Installation

Carefully clean contact surfaces of shaft and hub. Then lightly oil both surfaces with standard mineral oil. Position the SIT-LOCK® in the machined bore of the hub. Insert the shaft. Gradually and uniformly tighten the locking nut to the tightening torque (M_s).

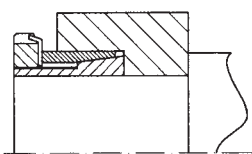
Note: once the tightening torque is reached, do not tighten the locking nut anymore.

Do not use lubricant like "Molykote" or molybdenum disulfide based oils.

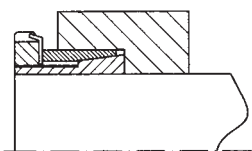
Removal

Loosen the lock nut until the SIT-LOCK® is completely released.

Application 1



Application 2



Note:

M_T , F_{ax} , P_w and P_n stated in this catalogue are valid for application 1. For application 2, they have to be increased by 25%.

Dimensions [mm]				Performances		Pressure [N/mm ²]		Slotten Nut		
d x D	D ₁	H	H ₁	M _T [Nm]	F _{ax} [kN]	P _w	P _n	Size	M _s [Nm]	
14 x 25	32,0	17,0	9,0	52	7	241	135	KM4	M20x1	95
15 x 25	32,0	17,0	9,0	56	7	225	135	KM4	M20x1	95
16 x 25	32,0	17,0	9,0	60	7	211	135	KM4	M20x1	95
17 x 26	38,0	18,0	9,0	86	10	271	177	KM5	M25x1,5	160
18 x 26	38,0	18,0	9,0	91	10	256	177	KM5	M25x1,5	160
18 x 30	38,0	17,5	9,0	91	10	256	154	KM5	M25x1,5	160
19 x 30	38,0	18,0	9,0	96	10	242	154	KM5	M25x1,5	160
20 x 30	38,0	18,0	9,0	102	10	230	154	KM5	M25x1,5	160
22 x 32	45,0	18,0	9,0	127	12	238	164	KM6	M30x1,5	220
24 x 35	45,0	18,0	9,0	139	12	218	150	KM6	M30x1,5	220
25 x 35	45,0	18,0	9,0	144	12	210	150	KM6	M30x1,5	220
28 x 36	52,0	18,0	10,0	215	15	231	179	KM7	M35x1,5	340
28 x 40	52,0	18,0	9,0	215	15	248	174	KM7	M35x1,5	340
30 x 40	52,0	20,0	11,0	230	15	188	141	KM7	M35x1,5	340
32 x 42	58,0	22,0	11,0	302	19	218	166	KM8	M40x1,5	480
35 x 45	58,0	22,0	11,0	331	19	199	155	KM8	M40x1,5	480
36 x 45	58,0	22,0	11,0	340	19	194	155	KM8	M40x1,5	480
38 x 48	65,0	25,0	14,0	453	24	185	147	KM9	M45x1,5	680
40 x 50	65,0	25,0	14,0	477	24	176	141	KM9	M45x1,5	680
42 x 55	70,0	26,0	14,0	576	27	193	147	KM10	M50x1,5	870
45 x 55	70,0	26,0	14,0	617	27	180	147	KM10	M50x1,5	870
48 x 62	75,0	26,0	14,0	669	28	171	133	KM11	M55x2	970
50 x 60	75,0	26,0	14,0	697	28	164	137	KM11	M55x2	970
50 x 62	75,0	26,0	14,0	697	28	164	126	KM11	M55x2	970
55 x 65	80,0	27,0	15,0	796	29	129	109	KM12	M60x2	1.100
55 x 68	80,0	27,0	15,0	796	29	129	105	KM12	M60x2	1.100
56 x 68	80,0	27,0	15,0	810	29	127	105	KM12	M60x2	1.100
60 x 70	85,0	29,0	15,0	946	32	129	111	KM13	M65x2	1.300
60 x 73	85,0	29,0	15,0	946	32	129	106	KM13	M65x2	1.300
63 x 79	92,0	31,0	17,0	1.136	36	121	96	KM14	M70x2	1.600
65 x 79	92,0	31,0	17,0	1.172	36	117	96	KM14	M70x2	1.600
70 x 84	98,0	31,0	17,0	1.470	42	126	105	KM15	M75x2	2.000

Notes:

Dimensions representing the total length of the hub are indicative; they are calculated according to the geometric rules.

For assemblies requiring larger dimensions, contact our Technical Department.

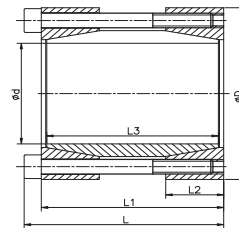
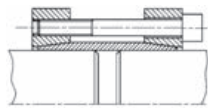
Maximum allowable roughness
Rt 16 µm
Maximum recommended tolerance
shaft h 8 - hub H 8

M _S	Screw tightening torque	Nm
M _T	Transmissible torque moment	Nm
F _{ax}	Transmissible axial load	N
p _w	Shaft pressure	N/mm ²
p _n	Hub pressure	N/mm ²

SIT-LOCK® 10 - External Rigid Shaft Coupling

SIT-LOCK® 10 are shrink disk couplings with double taper design. They offer easy angular timing and axial adjustment of shaft ends.

They transmit high torque and bending moment without keys and offer a low cost solution for shaft to shaft rigid connection.



Installation

Carefully clean contact surfaces of shaft and hub. Then, lightly oil both surfaces with standard mineral oil. Position the SIT-LOCK® on the shaft and into the hub machined bore. Align them as required by the application. Gradually and uniformly tighten the locking screws to the tightening torque (M_s).

You must tighten the screws in diametrically opposite sequence in stages:

- hand tighten the screws until the surfaces are in contact
- carefully check the position of the hub on the shaft
- tighten the screws to half the value of the tightening torque (M_s) stated in the catalogue
- repeat the operation until the tightening torque is reached using the dynamometric screw-driver

- check every locking screw to insure it has been tightened to the specific tightening torque

Note: once the tightening torque is reached, do not continue to tighten the screws. Do not use lubricant like "Molykote" or molybdenum disulfide based oils.

Removal

Loosen all the locking screws in a clockwise sequence until coupling can be moved on shafts. Do not remove screws completely.

Note: Torouse the locking element, carefully oil the screws and the conical surfaces, then follow installation instructions.

Dimensions [mm]					Performances		Clamping screws (DIN 912 - 12,9)		
d x D	L	L ₁	L ₂	L ₃	M _T [Nm]	F _{ax} [kN]	N°	Type	M _s [Nm]
17 x 50	56	50	16	44	179	21	4	M6x45	17
18 x 50	56	50	16	44	190	21	4	M6x45	17
19 x 50	56	50	16	44	200	21	4	M6x45	17
20 x 50	56	50	16	44	211	21	4	M6x45	17
22 x 55	66	60	18,5	54	347	32	6	M6x55	17
24 x 55	66	60	18,5	54	379	32	6	M6x55	17
25 x 55	66	60	18,5	54	394	32	6	M6x55	17
28 x 60	66	60	18,5	54	442	32	6	M6x55	17
30 x 60	66	60	18,5	54	473	32	6	M6x55	17
32 x 63	66	60	18,5	54	505	32	6	M6x55	17
35 x 75	83	75	22	67	682	39	4	M8x70	42
38 x 75	83	75	22	67	741	39	4	M8x70	42
40 x 75	83	75	22	67	780	39	4	M8x70	42
42 x 78	83	75	22	67	819	39	4	M8x70	42
45 x 85	93	85	24,5	76	1.317	59	6	M8x80	42
48 x 90	93	85	24,5	76	1.405	59	6	M8x80	42
50 x 90	93	85	24,5	76	1.463	59	6	M8x80	42
55 x 94	93	85	24,5	76	2.147	78	8	M8x80	42
60 x 100	93	85	24,5	76	2.343	78	8	M8x80	42
65 x 105	93	85	24,5	76	2.538	78	8	M8x80	42
70 x 115	110	100	29	90	3.239	93	6	M10x95	83
75 x 120	110	100	29	90	3.471	93	6	M10x95	83
80 x 125	110	100	29	90	4.938	123	8	M10x95	83

Notes:

Dimensions representing the total length of the hub are indicative; they are calculated according to the geometric rules.

For assemblies requiring larger dimensions, contact our Technical Department.

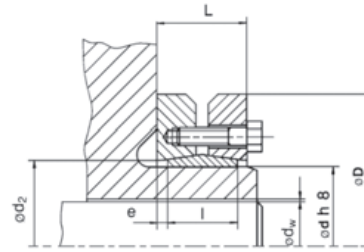
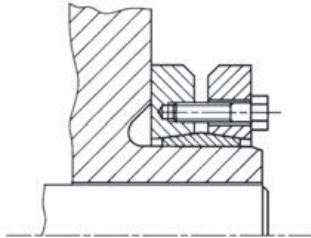
Maximum allowable roughness
Rt 16 µm
Maximum recommended tolerance
shaft h 8

M _S	Screw tightening torque	Nm
M _T	Transmissible torque moment	Nm
F _{ax}	Transmissible axial load	N

SIT-LOCK® 11 - External Shrink Discs

Shrink discs are external locking devices which are installed over hub projections. By locking the screws, radial pressures act on the hub allowing an effective and solid connection.

Recommended for medium and high torque. SIT-LOCK® 11S is also available in "SPLIT" and "HALF" for special applications.



Installation

Carefully remove, if present, protection spacers used during transport. Check if the screws and the rings' cone surfaces are well lubricated, otherwise, lightly oil them with molybdenum disulfide lubricants, like "Molykote" or similar. Clean, with care, contact surfaces of shaft and hub.

Position the components to connect. In uniform sequence, tighten the clamping screws to the tightening torque (M_s). Check optically that the gap between outer rings is the most uniform possible.

Note: once the tightening torque is reached, do not tighten the screws.

Removal

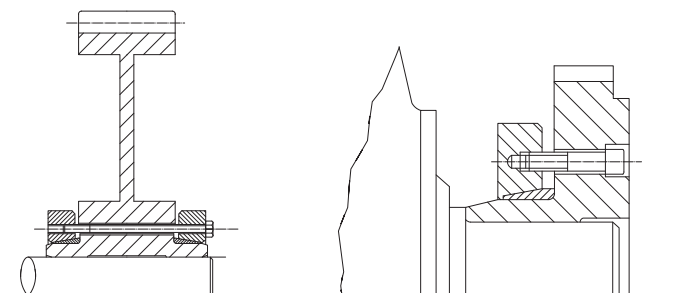
Loosen the screws uniformly and gradually to prevent rings from jamming. When all the screws are loose, remove the shaft or separate the hub and shaft itself.

Note: To reuse the locking element, carefully disassemble, clean and inspect all the components; oil the screws and the conical surfaces, then follow Installation instructions.

Maximum recommended tolerance

diameter shaft d ; $h\ 8$
 diameter shaft d_w ;
 $j6$ for $\varnothing \leq 30$
 $h6$ for \varnothing between 30 to 50
 $g6$ for \varnothing between 50 to 80
 $g6$ for $\varnothing > 80$

diameter bore d_w ;
 $H6$ for $\varnothing \leq 30$
 $H6$ for \varnothing between 30 to 50
 $H6$ for \varnothing between 50 to 80
 $H7$ for $\varnothing > 80$



"Split" version

"Half" version

Maximum allowable roughness

Rt 16 μm

SIT-LOCK® 11S - standard version

Dimensions [mm]							Performances		Clamping screws (DIN 931 - 10,9)		
d	D	d _w	l	L	d ₂	e	M _T [Nm]	F _{ax} [kN]	N°	Tipo	M _s [Nm]
24	50	19	14	19,5	26	2,75	170	30	6	M 5	4
		20					210	30			
		21					250	30			
30	60	24	16	21,5	32	2,75	300	30	7	M 5	4
		25					340	30			
		26					380	30			
36	72	28	18	23,5	38	2,75	440	50	5	M 6	12
		30					570	60			
		31					630	60			
44	80	32	20	25,5	47	2,75	620	60	7	M 6	12
		35					780	70			
		36					860	80			
50	90	38	22	27,5	53	2,75	940	90	8	M 6	12
		40					1.160	90			
		42					1.380	90			
55	100	42	23	30,5	58	3,75	1.160	80	8	M 6	12
		45					1.520	90			
		48					1.880	100			
62	110	48	23	30,5	66	3,75	1.750	100	10	M 6	12
		50					2.000	110			
		52					2.250	120			
68	115	50	23	30,5	72	3,75	2.000	100	10	M 6	12
		55					2.600	110			
		60					3.150	120			
75	138	55	25	32,5	79	3,75	2.400	120	7	M 8	30
		60					3.200	140			
		65					3.950	160			
80	145	60	25	32,5	84	3,75	3.200	120	7	M 8	30
		65					3.900	140			
		70					4.600	160			
90	155	65	30	39	94	4,5	4.750	170	10	M 8	30
		70					6.000	190			
		75					7.250	210			
100	170	70	34	44	104	5,0	6.900	200	12	M 8	30
		75					7.500	220			
		80					9.000	240			
110	185	75	39	50	114	5,5	7.200	230	9	M10	59
		80					9.000	250			
		85					10.800	260			
125	215	85	42	54	134	6,0	11.000	300	12	M10	59
		90					13.000	320			
		95					15.000	350			
140	230	95	46	60,5	146	7,25	15.100	370	10	M12	100
		100					17.600	400			
		105					20.100	430			
155	265	105	50	64,5	165	7,25	22.000	450	12	M12	100
		110					25.000	480			
		115					28.000	510			
165	290	115	56	71	175	7,5	31.000	600	8	M16	250
		120					35.000	630			
		125					39.000	660			
175	300	125	56	71	185	7,5	36.000	610	8	M16	250
		130					41.000	640			
		135					45.000	680			
185	330	135	71	86	195	7,5	52.000	780	10	M16	250
		140					57.000	820			
		145					62.000	860			

Notes:

Dimensions representing the total length of the hub are indicative; they are calculated according to the geometric rules.

For assemblies requiring larger dimensions, contact our Technical Department.

M _S	Screw tightening torque	Nm
M _T	Transmissible torque moment	Nm
F _{ax}	Transmissible axial load	N

SIT-LOCK® 11S - standard series

Dimensions [mm]							Performances		Clamping screws (DIN 931 - 10,9)		
d	D	d _w	l	L	d ₂	e	M _T [Nm]	F _{ax} [kN]	N°	Tipo	M _s [Nm]
195	350	140	71	86	210	7,5	65.000	930	12	M16	250
		150					76.000	1.030			
		155					81.500	1.070			
200	350	150	71	86	210	7,5	74.000	990	12	M16	250
		155					80.000	1.040			
		160					86.000	1.080			
220	370	160	88	104	230	8	95.000	1.190	15	M16	250
		165					102.000	1.240			
		170					110.000	1.290			
240	405	170	92	109	248	8,5	120.000	1.460	12	M20	490
		180					138.000	1.580			
		190					156.000	1.680			
260	430	190	103	120	268	8,5	164.000	1.760	14	M20	490
		200					184.000	1.880			
		210					205.000	2.010			
280	460	210	114	134	288	10	217.000	2.090	16	M20	490
		220					244.000	2.220			
		230					270.000	2.350			
300	485	230	122	142	308	10	275.000	2.470	18	M20	490
		240					295.000	2.570			
		245					315.000	2.640			
320	520	240	122	142	328	10	312.000	2.650	20	M20	490
		250					340.000	2.790			
		260					374.000	2.900			
340	570	250	134	156	348	11	390.000	3.120	24	M20	490
		260					422.500	3.250			
		270					460.000	3.400			
350	580	270	140	162	358	11	442.000	3.280	24	M20	490
		280					480.000	3.430			
		285					500.000	3.500			
360	590	280	140	162	368	11	463.000	3.310	24	M20	490
		290					502.000	3.460			
		295					522.000	3.540			
380	645	290	144	168	387	12	567.000	3.910	20	M24	840
		300					610.000	4.080			
		310					658.000	4.250			
390	660	300	144	168	397	12	624.000	4.160	21	M24	840
		310					671.000	4.330			
		320					718.000	4.480			
400	680	315	144	168	407	12	670.000	4.260	21	M24	840
		320					695.000	4.350			
		330					744.000	4.500			
420	690	330	164	188	427	12	780.000	4.850	24	M24	840
		340					840.000	5.040			
		350					900.000	5.220			
440	750	340	177	202	447	12,5	806.000	4.740	24	M24	840
		350					860.000	4.910			
		360					917.000	5.090			
460	770	360	177	202	468	12,5	1.000.000	5.670	28	M24	840
		370					1.070.000	5.860			
		380					1.140.000	6.050			
480	800	380	188	213	488	12,5	1.170.000	6.150	30	M24	840
		390					1.240.000	6.350			
		400					1.310.000	6.550			

Notes:

Dimensions representing the total length of the hub are indicative; they are calculated according to the geometric rules.

For assemblies requiring larger dimensions, contact our Technical Department.

M _S	Screw tightening torque	Nm
M _T	Transmissible torque moment	Nm
F _{ax}	Transmissible axial load	N

SIT-LOCK® 11H - heavy series

Dimensions [mm]							Performances		Clamping screws (DIN 931 - 10,9)		
d	D	d _w	l	L	d ₂	e	M _T [Nm]	F _{ax} [kN]	Tipo	N°	M _s [Nm]
125	215	85	55	65	129	5	15.000	360	10	M12	100
		90					17.500	390			
		95					20.000	420			
140	230	95	60	74	144	7	20.600	430	12	M12	100
		100					23.500	470			
		105					26.500	500			
155	265	105	66	80	164	7	28.600	550	15	M12	100
		110					32.500	590			
		115					36.400	630			
165	290	115	72	88	174	8	41.000	740	10	M16	250
		120					46.000	790			
		125					50.700	820			
175	300	125	72	88	184	8	47.000	750	10	M16	250
		130					52.000	800			
		135					57.000	840			
185	330	135	92	112	194	10	72.000	1.100	14	M16	250
		140					78.000	1.150			
		145					86.000	1.200			
195	350	140	92	112	199	10	75.000	1.080	14	M16	250
		150					88.000	1.180			
		155					96.000	1.240			
200	350	145	92	112	204	10	85.000	1.170	15	M16	250
		150					92.500	1.230			
		155					100.000	1.290			
220	370	160	114	134	2224	10	127.000	1.590	20	M16	250
		165					136.000	1.650			
		170					146.500	1.720			
240	405	170	120	144	244	12	155.000	1.820	15	M20	490
		180					176.000	1.960			
		190					198.000	2.080			
260	430	190	136	160	265	12	213.000	2.260	18	M20	490
		200					240.000	2.420			
		210					268.000	2.580			
280	460	210	148	172	285	12	285.000	2.740	21	M20	490
		220					320.000	2.910			
		230					355.000	3.090			
300	485	230	152	176	305	12	341.000	2.960	22	M20	490
		240					376.000	3.130			
		245					394.000	3.220			
320	520	240	160	184	325	12	378.500	3.150	24	M20	490
		250					415.000	3.330			
		260					451.000	3.470			
340	570	250	176	200	345	12	489.500	3.910	21	M24	840
		260					530.000	4.080			
		270					578.000	4.280			
350	580	270	176	200	355	12	556.000	4.120	21	M24	840
		280					604.000	4.320			
		285					629.000	4.420			
360	590	280	180	204	365	12	612.000	4.370	22	M24	840
		290					663.000	4.570			
		295					689.000	4.670			
380	645	290	180	204	387	12	618.000	4.270	22	M24	840
		300					668.000	4.460			
		310					719.000	4.650			
390	660	300	188	212	397	12	708.000	4.720	24	M24	840
		310					762.000	4.910			
		320					814.500	5.090			
400	680	315	188	212	407	12	765.000	4.860	24	M24	840
		320					788.000	4.930			
		330					845.000	5.130			
420	690	330	214	238	427	12	999.000	6.060	30	M24	840
		340					1.068.000	6.290			
		350					1.140.000	6.520			
440	750	340	224	252	448	14	1.058.000	6.230	24	M27	1.250
		350					1.130.000	6.460			
		360					1.204.000	6.690			
460	770	360	224	252	468	14	1.320.000	7.440	28	M27	1.250
		370					1.420.000	7.700			
		380					1.500.000	7.950			

Notes:
Dimensions representing the total length of the hub are indicative; they are calculated according to the geometric rules.

For assemblies requiring larger dimensions, contact our Technical Department.

M _S	Screw tightening torque	Nm
M _T	Transmissible torque moment	Nm
F _{ax}	Transmissible axial load	N

SIT-LOCK®

SIT-LOCK® 11L - light series

Dimensions [mm]							Performances		Clamping screws (DIN 931 - 10,9)		
d	D	d _w	l	L	d ₂	e	M _T [Nm]	F _{ax} [kN]	N°	type	M _s [Nm]
125	185	95	39	51	129	6	10.550	220	8	M10	59
		100					12.100	240			
		105					13.800	260			
140	220	110	39	51	144	6	14.800	270	9	M10	59
		120					18.640	310			
		125					20.500	330			
155	245	130	39	51	159	6	24.000	370	11	M10	59
		135					26.400	390			
		140					29.000	410			
165	260	135	46	62	169	8	32.000	480	10	M12	100
		140					35.200	500			
		145					38.500	530			
175	275	145	46	62	179	8	39.000	540	11	M12	100
		150					42.400	560			
		155					46.000	590			
185	295	155	46	62	189	8	46.600	600	12	M12	100
		160					50.300	630			
		165					54.000	650			
195	315	165	56	72	199	8	63.000	760	15	M12	100
		170					67.700	800			
		175					72.500	830			
200	330	175	56	72	204	8	74.000	850	16	M12	100
		180					79.500	890			
		185					84.500	920			
220	345	180	66	84	224	9	82.800	920	10	M16	250
		190					93.500	980			
		200					105.000	1.060			
240	370	200	66	84	244	9	113.000	1.140	12	M16	250
		210					127.500	1.210			
		215					134.500	1.250			
260	395	220	72	92	265	10	149.000	1.350	14	M16	250
		230					165.000	1.440			
		235					173.000	1.480			
280	425	230	84	104	285	10	171.000	1.490	16	M16	250
		240					189.000	1.570			
		250					208.000	1.660			
300	460	250	84	104	305	10	215.000	1.720	18	M16	250
		260					234.000	1.800			
		270					255.000	1.890			
320	495	270	84	106	325	11	260.000	1.940	20	M16	250
		280					284.000	2.030			
		290					306.000	2.120			
340	535	290	84	106	345	11	300.000	2.070	21	M16	250
		300					324.400	2.160			
		305					337.000	2.210			
350	545	300	100	122	355	11	372.000	2.480	16	M20	490
		305					385.000	2.540			
		310					400.000	2.590			
360	555	300	100	122	365	11	360.000	2.400	16	M20	490
		310					388.000	2.500			
		320					415.000	2.590			
380	585	320	112	136	387	12	435.000	2.720	18	M20	490
		325					451.000	2.780			
		330					467.000	2.840			
390	595	330	112	136	397	12	505.000	3.060	20	M20	490
		340					540.000	3.180			
		350					577.000	3.300			
400	615	340	112	136	407	12	550.000	3.230	21	M20	490
		350					587.000	3.360			
		360					626.000	3.480			
420	630	350	120	144	427	12	578.000	3.300	22	M20	490
		360					617.000	3.430			
		370					655.000	3.550			
440	660	370	120	144	447	12	677.000	3.660	24	M20	490
		380					719.000	3.790			
		390					762.000	3.910			
460	685	390	132	158	468	13	840.000	4.320	28	M20	490
		400					890.000	4.460			
		410					935.000	4.580			

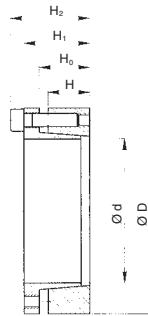
Notes:
Dimensions representing the total length of the hub are indicative; they are calculated according to the geometric rules.

For assemblies requiring larger dimensions, contact our Technical Department.

M _S	Screw tightening torque	Nm
M _T	Transmissible torque moment	Nm
F _{ax}	Transmissible axial load	N

SIT-LOCK® 12 - Self-Centering

SIT-LOCK® 12 is self-centering unit and convenient series. It is suggested for large quantities in applications with medium torques.



Installation

Carefully clean contact surfaces of shaft and hub. Then, lightly oil both surfaces with standard mineral oil. Position the SIT-LOCK® on the shaft and into the hub machined bore. Align them as required by the application. Gradually and uniformly tighten the locking screws to the tightening torque (Ms).

You must tighten the screws in diametrically opposite sequence in stages:

- hand tighten the screws until the surfaces are in contact

Removal

Gradually loosen all locking screws. Remove and transfer the screws into the releasing tapped holes and tighten them until the SIT-LOCK® is released.

- carefully check the position of the hub on the shaft
- tighten the screws to half the value of the tightening torque (Ms) stated in the catalogue
- repeat the operation until the tightening torque is reached using the dynamometric screw-driver
- check every locking screw to insure it has been tightened to the specific tightening torque

Do not use lubricant like "Molykote" or molybdenum disulfide based oils.

Note: To reuse the locking element, carefully oil the screws and the conical surfaces, then follow installation instructions.

Notes:
Dimensions representing the total length of the hub are indicative; they are calculated according to the geometric rules.

For assemblies requiring larger dimensions, contact our Technical Department.

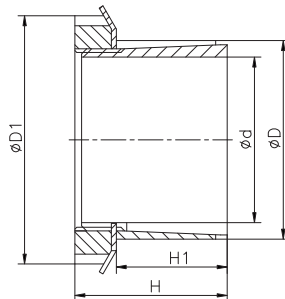
Maximum allowable roughness
Rt 16 µm
Maximum recommended tolerance
shaft h 8 - hub H 8

Dimensions [mm]					Performances		Pressure [N/mm ²]		Clamping screws (DIN 912 - 12,9)		
d x D	H	H ₀	H ₁	H ₂	M _T [Nm]	F _{ax} [kN]	p _w	p _n	N°	Type	M _s [Nm]
18 x 40	12	15	20	24	210	24	235	130	6	M4	5
19 x 41	12	15	20	24	220	24	220	128	6	M4	5
20 x 42	12	15	20	24	270	28	245	145	7	M4	5
22 x 44	12	15	20	24	300	28	225	140	7	M4	5
24 x 46	12	15	20	24	330	28	205	135	7	M4	5
25 x 47	12	15	20	24	340	28	195	130	7	M4	5
28 x 50	12	15	20	24	500	36	225	155	9	M4	5
30 x 52	12	15	20	24	530	36	210	151	9	M4	5
32 x 54	12	15	20	24	570	36	197	146	9	M4	5
35 x 57	16	19	24	28	690	40	158	115	10	M4	5
36 x 58	16	19	24	28	710	40	155	113	10	M4	5
38 x 60	16	19	24	28	830	44	160	120	11	M4	5
40 x 62	16	19	24	28	870	44	150	116	11	M4	5
42 x 70	19	23	30	36	1.530	73	200	146	8	M6	17
45 x 73	19	23	30	36	1.640	73	185	140	8	M6	17
48 x 76	19	23	30	36	1.750	73	175	134	8	M6	17
50 x 78	19	23	30	36	1.820	73	165	131	8	M6	17
55 x 83	19	23	30	36	2.000	73	150	123	8	M6	17
56 x 84	19	23	30	36	2.040	73	150	120	8	M6	17
60 x 88	19	23	30	36	2.460	82	158	130	9	M6	17
63 x 91	19	23	30	36	2.580	82	150	125	9	M6	17
65 x 93	19	23	30	36	2.660	82	140	120	9	M6	17
70 x 105	23	28	37	45	4.720	135	18,0	148	8	M8	41
75 x 110	23	28	37	45	5.050	135	170	140	8	M8	41
80 x 115	23	28	37	45	5.390	135	160	135	8	M8	41
85 x 120	23	28	37	45	5.730	135	150	130	8	M8	41
90 x 125	23	28	37	45	7.580	169	170	156	10	M8	41

M _s	Screw tightening torque	Nm
M _T	Transmissible torque moment	Nm
F _{ax}	Transmissible axial load	N

SIT-LOCK® 13 - Self-Centering

SIT-LOCK®13 is very close to the standard type SIT-LOCK® 9, tapered rings and a locking nut. but it is manufactured in a longer execution. It is made of two



Installation

Carefully clean contact surfaces of shaft and hub. Then lightly oil both surfaces with standard mineral oil. Position the SIT-LOCK® in the machined bore of the hub. Insert the shaft. Gradually and uniformly tighten the locking nut to the tightening torque (M_s).

Note: once the tightening torque is reached, do not tighten the locking nut anymore.

Do not use lubricant like "Molykote" or molybdenum disulfide based oils.

Removal

Loosen the lock nut until the SIT-LOCK® is completely released.

Note: Disassembling the SIT-LOCK® 13 may be difficult due to its particular taper angle. Therefore, if torque is sufficient, it is recommended to use SIT-LOCK® 9, which is easier to be disassembled.

Dimensions [mm]				Performances		Pressure [N/mm ²]		Slotten nut		
d x D	D ₁	H ₁	H	M _T [Nm]	F _{ax} [kN]	p _w	p _n	N°	Size	M _s [Nm]
14 x 25	32	23	31	72	9	98	55	KM4	M20x1	95
15 x 25	32	23	31	77	9	91	55	KM4	M20x1	95
18 x 30	38	24	33	125	13	98	59	KM5	M25x1,5	160
19 x 30	38	24	33	132	13	93	59	KM5	M25x1,5	160
20 x 30	38	24	33	139	13	88	59	KM5	M25x1,5	160
24 x 35	45	29	38	202	15	74	51	KM6	M30x1,5	200
25 x 35	45	29	38	210	15	71	51	KM6	M30x1,5	220
28 x 40	52	34	44	312	20	76	53	KM7	M35x1,5	340
30 x 40	52	34	44	335	20	71	53	KM7	M35x1,5	340
32 x 45	58	34	45	442	25	82	58	KM8	M40x1,5	340
35 x 45	58	34	45	483	25	75	58	KM8	M40x1,5	480
40 x 50	65	35	46	696	31	82	66	KM9	M45x1,5	680
45 x 55	70	35	47	902	36	84	69	KM10	M50x1,5	870
48 x 60	75	35	47	991	37	82	65	KM11	M55x2	970
50 x 60	75	35	47	1.014	37	77	64	KM11	M55x2	970
55 x 65	80	36	48	1.158	38	73	61	KM12	M60x2	1.100
60 x 70	85	36	50	1.379	41	73	62	KM13	M65x2	1.300

Notes:

Dimensions representing the total length of the hub are indicative; they are calculated according to the geometric rules.

For assemblies requiring larger dimensions, contact our Technical Department.

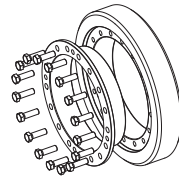
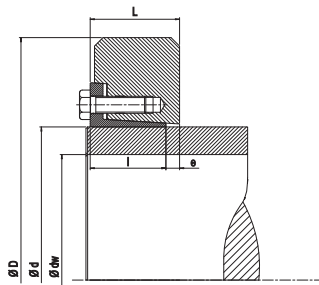
Maximum allowable roughness
Rt 16 µm
Maximum recommended tolerance
shaft h 8 - hub H 8

M _S	Screw tightening torque	Nm
M _T	Transmissible torque moment	Nm
F _{ax}	Transmissible axial load	N
p _w	Shaft pressure	N/mm ²
p _n	Hub pressure	N/mm ²

SIT-LOCK® 14 - External Two Piece Shrink Disc

SIT-LOCK® 14 are shrink discs for external, series “14”, are characterised by a single tapered ring instead of opposite tapers of the 3 pieces shrink discs SIT-LOCK® series “11”. The SIT-LOCK® 14 Shrink discs offer a better concentricity and centering and very good balancing. These features make the series highly suitable for mid-high speed applications. SIT-LOCK® 14 are manufactured in five different types:

- 14-21 for mid torque transmission
- 14-22 for high torque transmission
- 14-81 for very high torque transmission
- 14-23 equivalent in size to the type 14-22 but able to transmit an extra 20-30% of torque
- 14-83 equivalent in size to the type 14-81 but able to transmit an extra 20-30% of torque



Installation

SIT-LOCK® 14 is ready to be mounted. Avoid dismounting before use.

- Carefully clean the hub-shaft contact area.
- Verify the threads, head of the locking screw, and the tapers of the inner rings. If necessary, lubricate them with molybdenum disulfide grease.
- Insert the shrink disc on the hollow shaft.
Warning: do not tighten the screws before the shaft is fixed to the shaft.

- Slide the shaft on the hub or mount the hub on the shaft.
- Using a torque wrench, tighten the screws gradually and in sequence all the way around (not in a diametrical opposite sequence).
- Verify the screws are completely tightened. Make one final pass. If no bolts move, installation is completed.

Removal

- Gradually loose the locking screws all the way around. Begin by releasing each bolt about one-quarter of a turn.
- Back all screws out until there is a gap between the head of the bolt and the SIT-LOCK® face.
- Completely remove a few screws and thread them into the adjacent removal threads. Use these fasteners to push the inner ring away from the outer collar until the SIT-LOCK® is loose.

Note: After removal of an existing component, disassemble the SIT-LOCK®. Clean and inspect all parts. Reinstall the assembly following installation procedure.

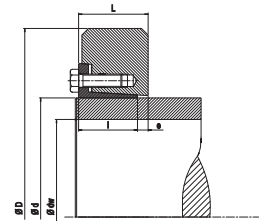
Tolerance

Transmissible torque values are valid when hub shaft tolerance tolerances, and roughness tolerance, are respected.

Maximum allowable roughness
Rt 16 µm
Maximum recommended tolerance
shaft h 6 - hub H 7 for $d_w < 160$ mm
shaft g 6 - hub H 7 for $d_w \geq 160$ mm
d = f 7 o better

SIT-LOCK® 1421

Dimensions						Performances		Clamping screws (DIN 933 - 10,9)	
d [mm]	D [mm]	d _w [mm]	l [mm]	L [mm]	e [mm]	M _T [Nm]	F _{ax} [kN]	N°	M _s [Nm]
140	215	110	38	46	8	16.000	298	M12	100
		120				20.000	341		
		130				25.000	385		
155 160	245	130	38	46	8	26.000	398	M12	100
		135				28.000	420		
		140				31.000	443		
165 170	263	135	43	53	10	29.000	432	M14	160
		140				32.000	456		
		145				35.000	480		
175 180	275	145	43	53	10	36.000	497	M14	160
		150				39.000	522		
		155				42.000	547		
185 190	290	155	51	62	11	50.000	645	M14	160
		160				54.000	675		
		165				58.000	704		
195 200	320	165	51	62	11	68.000	822	M14	160
		170				73.000	855		
		180				83.000	922		
220	340	180	55	70	15	80.000	892	M16	240
		190				91.000	962		
		200				103.000	1.032		
240	370	200	55	70	15	103.000	1.026	M16	240
		210				115.000	1.095		
		220				128.000	1.165		
260	405	220	55	70	15	132.000	1.197	M16	240
		230				146.000	1.271		
		240				161.000	1.344		
280	430	230	65	80	15	160.000	1.392	M20	470
		240				177.000	1.473		
		250				194.000	1.555		
300	460	250	65	80	15	191.000	1.529	M20	470
		260				209.000	1.610		
		270				228.000	1.691		
320	485	270	77	92	15	243.000	1.804	M20	470
		280				265.000	1.894		
		290				288.000	1.986		
340	520	280	77	92	15	274.000	1.958	M20	470
		290				297.000	2.050		
		300				322.000	2.143		
360	570	300	89	105	16	356.000	2.373	M20	470
		310				384.000	2.476		
		330				443.000	2.686		
390	590	330	89	105	16	438.000	2.654	M20	470
		340				469.000	2.759		
		350				501.000	2.865		
420	630	350	120	140	20	624.000	3.564	M24	820
		360				665.000	3.697		
		370				709.000	3.831		
440	660	370	132	152	20	778.000	4.203	M24	820
		380				826.000	4.350		
		390				877.000	4.497		
460	690	390	132	152	20	852.000	4.370	M24	820
		400				903.000	4.514		
		410				955.000	4.658		
480	720	410	152	174	22	1.086.000	5.298	M24	820
		420				1.147.000	5.461		
		430				1.210.000	5.626		
500	745	420	152	174	22	1.137.000	5.415	M24	820
		430				1.200.000	5.581		
		450				1.331.000	5.914		
530	790	450	162	186	24	1.376.000	6.114	M27	1.210
		460				1.446.000	6.287		
		480				1.592.000	6.635		
560	830	480	162	187	25	1.578.000	6.576	M27	1.210
		490				1.653.000	6.748		
		510				1.809.000	7.093		



Notes:
Dimensions representing the total length of the hub are indicative; they are calculated according to the geometric rules.

M _s	Screw tightening torque	Nm
M _T	Transmissible torque moment	Nm
F _{ax}	Transmissible axial load	N

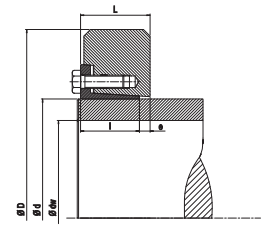
Dimensions						Performances		Clamping screws (DIN 933 - 10,9)	
d [mm]	D [mm]	d _w [mm]	l [mm]	L [mm]	e [mm]	M _T [Nm]	F _{ax} [kN]	N°	M _s [Nm]
590	880	510	172	197	25	1.873.000	7.344	M27	1.210
		520				1.957.000	7.526		
		540				2.131.000	7.891		
620	930	540	172	198	26	2.097.000	7.768	M27	1.210
		550				2.186.000	7.948		
		570				2.368.000	8.309		
660	990	570	182	209	27	2.426.000	8.511	M30	1.640
		580				2.522.000	8.696		
		610				2.823.000	9.255		
700	1040	610	182	210	28	2.772.000	9.088	M30	1.640
		620				2.874.000	9.271		
		640				3.084.000	9.638		
750	1100	640	192	222	30	3.104.000	9.700	M30	1.640
		650				3.214.000	9.888		
		680				3.555.000	10.456		
800	1150	680	192	224	32	3.443.000	10.128	M30	1.640
		700				3.673.000	10.495		
		730				4.033.000	11.049		

Notes:
Dimensions representing the total length of the hub are indicative; they are calculated according to the geometric rules.

M _S	Screw tightening torque	Nm
M _T	Transmissible torque moment	Nm
F _{ax}	Transmissible axial load	N

SIT-LOCK® 1422-1481

Dimensions						CAL 1422			CAL 1481			Clamping screws DIN 931
d [mm]	D [mm]	d _w [mm]	l [mm]	L [mm]	e [mm]	M _T [Nm]	F _{ax} [kN]	M _s [Nm]	M _T [Nm]	F _{ax} [kN]	M _s [Nm]	
12	35	9	10	11	1	20	5	12	-	-	-	M6
		10				8	-		-			
14	38	11	10	11	1	30	6	12	-	-	-	M6
		12				9	-		-			
16	41	13	13,5	15	1,5	70	10	12	-	-	-	M6
		14				13	-		-			
18	44	15	13,5	15	1,5	80	11	12	-	-	-	M6
		16				14	-		-			
20	47	17	13,5	15	1,5	150	18	12	-	-	-	M6
		18				20	-		-			
24	50	19	16	18	2	160	17	12	-	-	-	M6
		20				20	-		-			
		22				25	-		-			
30	60	24	18	20	2	270	23	12	-	-	-	M6
		25				25	-		-			
		26				28	-		-			
36	72	27	20	22	2	440	32	30	-	-	-	M8
		30				40	-		-			
		33				50	-		-			
44	80	34	22	24	2	690	40	30	-	-	-	M8
		35				44	-		-			
		37				50	-		-			
50	90	38	23,5	26	2,5	1.110	58	30	1.500	78	35	M8
		40				65	1.700		85			
		42				71	1.900		93			
55	100	42	26	29	3	1.230	59	30	1.600	78	35	M8
		45				68	2.000		88			
		48				78	2.400		99			
62	110	48	26	29	3	1.670	70	30	2.200	91	35	M8
		50				76	2.400		98			
		52				81	2.700		104			
68	115	50	26	29	3	1.870	75	30	2.400	94	35	M8
		55				89	3.000		111			
		60				104	3.800		127			
75	138	55	27	31	4	2.330	85	59	3.700	136	70	M10
		60				101	4.700		157			
		65				117	5.800		178			
80	145	60	27	31	4	3.190	106	59	4.200	142	70	M10
		65				123	5.200		161			
		70				140	6.300		181			
90	155	65	34	38	4	5.400	166	59	5.900	181	70	M10
		70				187	7.100		203			
		75				208	8.500		226			
100	170	70	39	43	4	6.000	171	59	7.400	213	70	M10
		75				192	8.900		237			
		80				213	10.400		261			
110	185	80	43,5	49	5,5	10.000	249	100	12.600	314	121	M10
		85				275	14.600		344			
		90				302	16.900		375			
120	197	85	46,5	53	6,5	11.900	280	100	13.600	320	121	M12
		90				307	15.700		349			
		95				334	18.000		378			
125	215	90	46,5	53	6,5	14.400	319	100	16.400	365	121	M12
		95				347	18.800		395			
		100				375	21.300		426			
135	230	95	49,5	58	8,5	18.100	382	160	20.300	427	195	M14
		100				412	23.000		459			
		110				473	28.900		525			
140	230	100	49,5	58	8,5	19.600	392	160	23.000	459	195	M14
		105				421	25.800		492			
		115				481	32.100		558			
155	263	110	53,5	62	8,5	26.500	482	160	31.100	565	195	M14
		115				514	34.500		601			
		125				578	42.000		672			
165	290	120	58	68	10	37.300	622	250	44.000	734	300	M16
		125				659	48.500		776			
		135				734	58.100		860			
175	300	130	58	68	10	45.000	692	250	54.000	834	300	M16
		135				730	59.000		876			
		145				805	70.000		962			



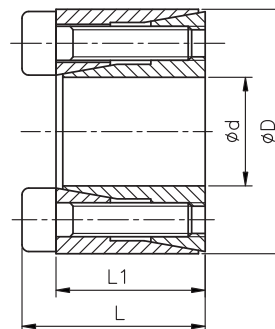
Notes:
Dimensions representing the total length of the hub are indicative; they are calculated according to the geometric rules.

M _S	Screw tightening torque	Nm
M _T	Transmissible torque moment	Nm
F _{ax}	Transmissible axial load	N

SIT-LOCK® 15 - Self-Centering

Suitable for servomotors and small pulleys. It gives an axial force, similar to the clamp load of the screws, and an axial movement

that can be used to set ball bearings.



Installation

Carefully clean contact surfaces of shaft and hub. Then, lightly oil both surfaces with standard mineral oil. Position the SIT-LOCK® on the shaft and into the hub machined bore. Align them as required by the application. Gradually and uniformly tighten the locking screws to the tightening torque (Ms).

You must tighten the screws in diametrically opposite sequence in stages:

- hand tighten the screws until the surfaces are in contact

Removal

Gradually loosen the clamping screws. Transfer the screws into the releasing tapped holes and tighten them until the front cone is released. Loosen the clamping screws again. Transfer the clamping screws into the releasing holes of the intermediate ring, and tighten them until the back cone is released.

Concentricity

For self-centering locking assemblies, the clamping element has a centering effect and the concentricity error can be considered 0.02-0.04 mm.

- carefully check the position of the hub on the shaft
- tighten the screws to half the value of the tightening torque (Ms) stated in the catalogue
- repeat the operation until the tightening torque is reached using the dynamometric screw-driver
- check every locking screw to insure it has been tightened to the specific tightening torque

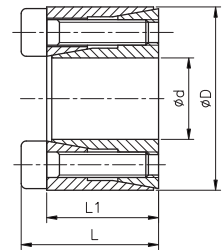
Do not use lubricant like "Molykote" or molybdenum disulfide based oils.

Note: To reuse the locking element, carefully oil the screws and the conical surfaces, then follow installation instructions.

Maximum allowable roughness
Rt 16 µm
Maximum recommended tolerance
shaft h 8 - hub H 8

SIT-LOCK® 15

Dimensins [mm]					Performances		Pressure [N/mm ²]		Clamping screws (DIN 912 - 12,9)		
d x D	d	D	L	L ₁	M _T [Nm]	F _{ax} [kN]	p _w	p _n	N°	Type	M _s [Nm]
5 x 16	5	16	13,5	11	7	3	190	60	3	M2,5 x 10	1,2
6 x 16	6	16	13,5	11	9	3	160	60	3	M2,5 x 10	1,2
6,35 x 16	6,35	16	13,5	11	9	3	150	60	3	M2,5 x 10	1,2
7 x 17	7	17	13,5	11	10	3	140	60	3	M2,5 x 10	1,2
8 x 18	8	18	13,5	11	11	3	120	55	3	M2,5 x 10	1,2
9 x 20	9	20	15,0	13	17	3	120	55	4	M2,5 x 12	1,2
9,53 x 20	9,53	20	15,0	13	17	3	115	55	4	M2,5 x 12	1,2
10 x 20	10	20	15,5	13	19	3	110	55	4	M2,5 x 12	1,2
11 x 22	11	22	15,5	13	21	3	100	50	4	M2,5 x 12	1,2
12 x 22	12	22	15,5	13	23	3	90	50	4	M2,5 x 12	1,2
14 x 26	14	26	20,0	17	40	6	95	50	4	M3 x 16	2,1
15 x 28	15	28	20,0	17	43	6	90	50	4	M3 x 16	2,1
16 x 32	16	32	21,0	17	80	10	150	70	4	M4 x 16	4,9
17 x 35	17	35	25,0	21	85	10	110	55	4	M4 x 20	4,9
18 x 35	18	35	25,0	21	90	10	105	55	4	M4 x 20	4,9
19 x 35	19	35	25,0	21	95	10	100	55	4	M4 x 20	4,9
20 x 38	20	38	26,0	21	165	16	155	80	4	M5 x 20	10
22 x 40	22	40	26,0	21	180	16	140	75	4	M5 x 20	10
24 x 47	24	47	32,0	26	280	23	145	75	4	M6 x 24	17
25 x 47	25	47	32,0	26	290	23	140	75	4	M6 x 24	17
28 x 50	28	50	32,0	26	485	35	180	100	6	M6 x 24	17
30 x 55	30	55	32,0	26	520	35	170	95	6	M6 x 24	17
32 x 55	32	55	32,0	26	555	35	165	95	6	M6 x 24	17
35 x 60	35	60	37,0	31	810	46	170	100	8	M6 x 28	17
38 x 65	38	65	37,0	31	880	46	155	90	8	M6 x 28	17
40 x 65	40	65	37,0	31	925	46	150	90	8	M6 x 28	17
42 x 75	42	75	44,0	36	1350	64	170	95	6	M8 x 34	41
45 x 75	45	75	44,0	36	1450	64	160	95	6	M8 x 34	41
48 x 80	48	80	44,0	36	2050	85	190	110	8	M8 x 34	41
50 x 80	50	80	44,0	36	2140	85	190	110	8	M8 x 34	41



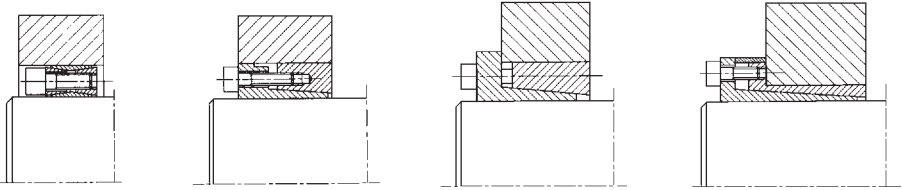
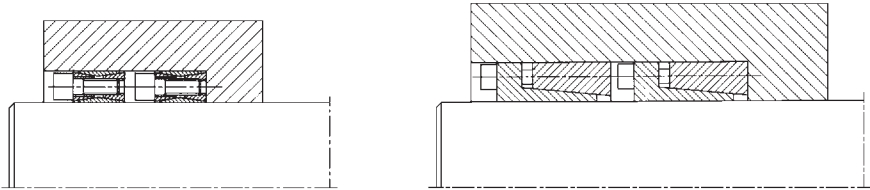
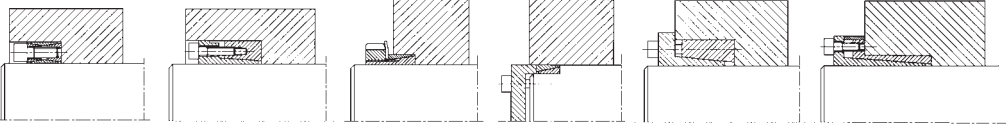
Notes:
Dimensions representing the total length of the hub are indicative; they are calculated according to the geometric rules.

M _S	Screw tightening torque	Nm
M _T	Transmissible torque moment	Nm
F _{ax}	Transmissible axial load	N
p _w	Shaft pressure	N/mm ²
p _n	Hub pressure	N/mm ²

Design of hub outside minimum diameter

When using the locking units, the shaft-hub connection is characterized by a pressure on the hub surface, which is exerted by the locking unit outer ring when the clamping screws are tightened to the stated value. It is important to design correctly the hub outside diameter. The following table summarizes the procedure as a simple calculation. To determine the hub outside minimum

diameter, simply multiply the factor K by the SIT-LOCK® outside diameter to obtain the hub outside minimum diameter. The factor K varies depending on the yield limit of hub material, the hub surface pressure (Pn) and the factor (x), variable according to the application type (A, B, C).

<p>Installation type A ($L_M \cong L_C$) X = 1</p> 
<p>Installation type B ($L_M \cong 2 L_C$) X = 0,8</p> 
<p>Installation type C ($L_M > 2 L_C$) X = 0,6</p> 
<p>Hub min diameter $D \times K$ for: K = factor stated in the table D = SIT-LOCK® outside diameter</p>

L_M	Hub length	mm
L_C	SIT-LOCK® length	mm

Hollow shaft

For application with locking-assemblies on hollow shaft, it is important to scale both hub minimum diameter and hollow

shaft diameter. Contact our Technical Department for design.

Example of calculation procedure

Design data

- Power transmission element to be connected: V-pulley
- Shaft diameter: 50 mm
- Maximum Torque in operation (Ma): 1.500 Nm
- V-pulley material: cast iron GG20
- Yield limit of V-pulley material: 150 N/mm²

Calculation

- SIT-LOCK® type: for this kind of application SIT-LOCK® 1 is suggested
- Size selection: 50 x 80 mm (see table SIT-LOCK® 1)
- Performance control: verify $M_T \geq M_a$
From the table obtain $M_T = 1.889$ Nm, so the above condition is verified
- Tolerance: h11 for the shaft - H11 for the SIT-LOCK® bore
- Roughness: $R_t \leq 16$
- Screws tightening torque: $M_s = 37$ Nm (see table SIT-LOCK® 1)
- Hub surface pressure: from the table you can find the value $P_n = 125$ N/mm²
- Application type: in this case it is preferable to adopt the application "C" with the centering guide between shaft and hub

- Coefficient K : obtained through the table "Coefficient K" by considering the following information:
 - yield limit of hub material = 150 N/mm²
 - hub surface pressure = 125 N/mm²
 - installation C
 Then, $K = 1,74$

- Hub outside minimum diameter:

$$\text{Hub } D_{\min} \geq D \cdot K$$

for

- D = SIT-LOCK® outside diameter [mm]
- K = 1,74

Then, hub $D_{\min} = (80 \cdot 1,74) = \mathbf{140 \text{ [mm]}}$

DIN 912

Screw diameter	P _v [N]			M _s [Nm]		
	8,8	10,9	12,9	8,8	10,9	12,9
M2,5	1.600	2.140	2.565	0,76	1,0	1,2
M3	2.210	3.110	3.730	1,3	1,9	2,2
M4	3.900	5.450	6.550	2,9	4,1	4,9
M5	6.350	8.950	10.700	6	8,5	10
M6	9.000	12.600	15.100	10	14	17
M7	13.200	18.500	22.200	16	23	28
M8	16.500	23.200	27.900	25	35	41
M9	22.000	30.900	37.100	36	51	61
M10	26.200	36.900	44.300	49	69	83
M12	38.300	54.000	64.500	86	120	145
M14	52.500	74.000	88.500	135	190	230
M16	73.000	102.000	123.000	210	295	355
M18	88.000	124.000	148.000	290	405	485
M20	114.000	160.000	192.000	410	580	690
M22	141.000	199.000	239.000	550	780	930
M24	164.000	230.000	276.000	710	1.000	1.200
M27	215.000	302.000	363.000	1.050	1.500	1.800
M30	262.000	368.000	442.000	1.450	2.000	2.400