

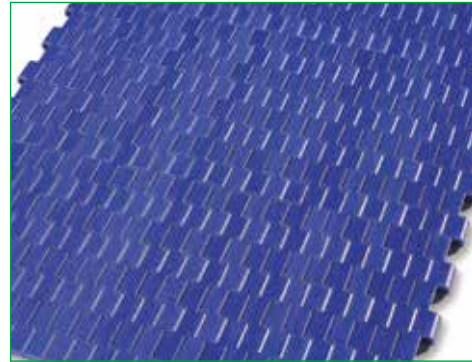
STRAIGHT MODULAR BELTS

The background of the page is a collage of images showing different types of modular belts. At the top, there is a blue belt with a grid-like pattern. Below it is a grey belt with a similar grid pattern. In the center, there is a white belt with a grid pattern. At the bottom, there are two belts: one is black with a grid pattern, and the other is grey with a grid pattern. The text 'Straight Modular belts' is overlaid on the white belt in the center.

**Straight Modular
belts**

PITCH 8 mm / 0,3"

Belt type: closed flat top surface
Pin diameter: \varnothing 3 mm
Open area: 0%
Hole openings: -
Minimum width: 101,6 mm
Nose bar diameter: 6 mm
Thickness: 6 mm
Accessories: -
Food Certification: FDA - EU



Standard executions

Belt material	Belt color	Pin
POM	White - blue	POM

Other materials and colors are available upon request.

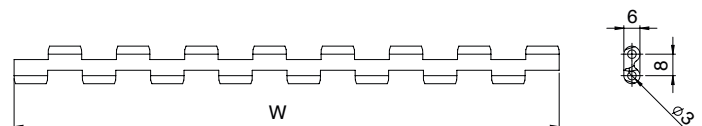
Belt material	Pin material	Belt performance [N/m]	Temperature range [°C]	Certification	Weight [kg/m ²]
POM	PA	2550	-43 ÷ +80	FDA - EU	1,08

PP = Polypropylene - PE = Polyethylene - POM = Acetal Resin - PA = Polyamide

Belt width [W]

Minimum [mm]	Standard increment [mm]	Special increment [mm]	Width tolerance* [mm]
101,6	Multiple: 152,4	Multiple: 25,4	+/-2 up to 300
			+/-3 up to 600
			+/-4 more than 600

*It is advisable to consider dimensional variations in width based on operating temperatures and humidity when the belt is made of polyamide.



Part number	NMMP 80 C -PO -B	
Type	Belt color: W = white / B = blue	
Pitch	Belt material: PO = POM - Acetal Resin / PA = Polyamide	
Closed flat top surface		

NMMP80NS

PITCH 8 mm / 0,3"

STRAIGHT MODULAR BELTS

Belt type: no slip closed surface with diamond pattern

Pin diameter: Ø 3 mm

Open area: 0%

Hole openings: -

Minimum width: 101,6 mm

Nose bar diameter: 6 mm

Thickness: 6 mm

Accessories: -

Food Certification: FDA - EU



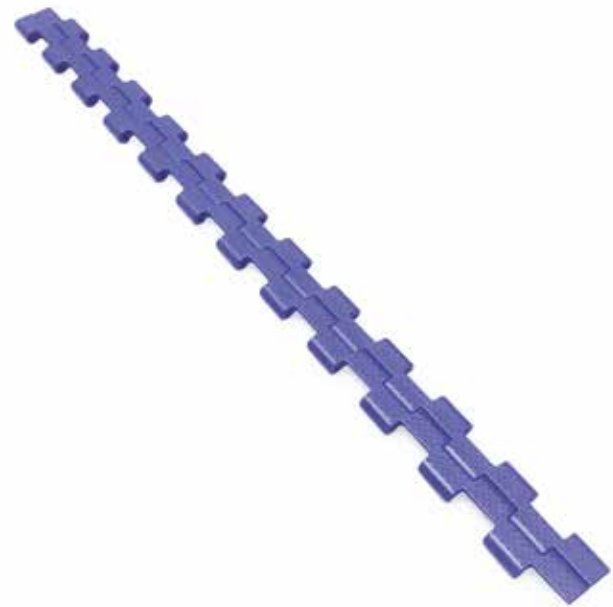
Standard executions

Belt material	Belt color	Pin
POM	White - blue	POM

Other materials and colors are available upon request.

Belt material	Pin material	Belt performance [N/m]	Temperature range [°C]	Certification	Weight [kg/m ²]
POM	PA	2550	-43 ÷ +80	FDA - EU	1,08

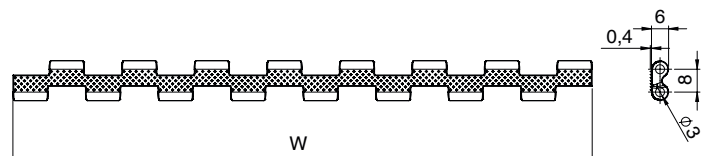
PP = Polypropylene - PE = Polyethylene - POM = Acetal Resin - PA = Polyamide



Belt width [W]

Minimum [mm]	Standard increment [mm]	Special increment [mm]	Width tolerance* [mm]
101,6	Multiple: 152,4	Multiple: 25,4	+/-2 up to 300
			+/-3 up to 600
			+/-4 more than 600

*It is advisable to consider dimensional variations in width based on operating temperatures and humidity when the belt is made of polyamide.



Part number

NMMP 80 NS -PO -B

Type

Pitch

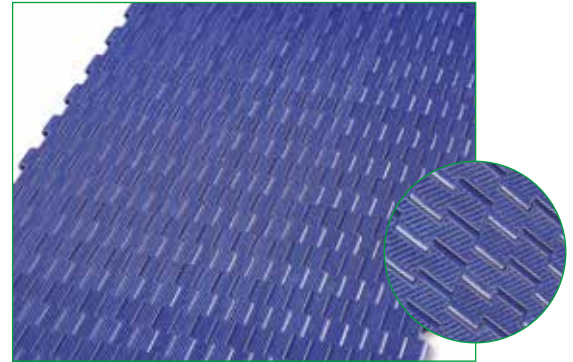
No slip closed surface with diamond pattern

Belt color: W = white / B = blue

Belt material:
PO = POM - Acetal Resin / PA = Polyamide

PITCH 8 mm / 0,3"

Belt type: no cling closed surface, inverted diamond pattern
Pin diameter: Ø 3 mm
Open area: 0%
Hole openings: -
Minimum width: 101,6 mm
Nose bar diameter: 6 mm
Thickness: 6 mm
Accessories: -
Food Certification: FDA - EU



Standard executions

Belt material	Belt color	Pin
POM	White - blue	POM

Other materials and colors are available upon request.

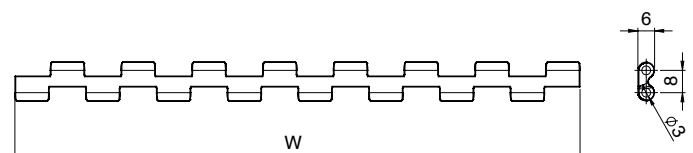
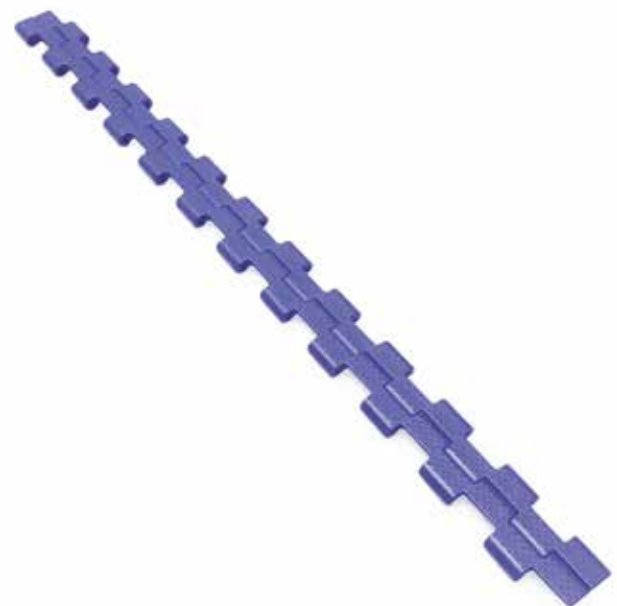
Belt material	Pin material	Belt performance [N/m]	Temperature range [°C]	Certification	Weight [kg/m ²]
POM	PA	2550	-43 ÷ +80	FDA - EU	1,08

PP = Polypropylene - PE = Polyethylene - POM = Acetal Resin - PA = Polyamide

Belt width [W]

Minimum [mm]	Standard increment [mm]	Special increment [mm]	Width tolerance* [mm]
101,6	Multiple: 152,4	Multiple: 25,4	+/-2 up to 300
			+/-3 up to 600
			+/-4 more than 600

*It is advisable to consider dimensional variations in width based on operating temperatures and humidity when the belt is made of polyamide.



Part number	NMMP 80	NP -PO NP
Type		
Pitch		
No cling closed surface, inverted diamond pattern		
	Belt color: W = white / B = blue	
	Belt material: PO = POM - Acetal Resin / PA = Polyamide	

NMMP80FG

PITCH 8 mm / 0,3"

STRAIGHT MODULAR BELTS

Belt type: open flat surface flush grid

Pin diameter: Ø 3 mm

Open area: 40%

Hole openings: 9x3 mm

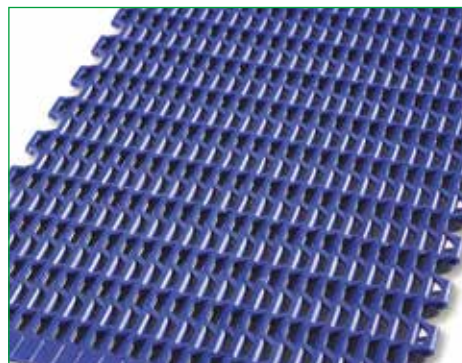
Minimum width: 101,6 mm

Nose bar diameter: 6 mm

Thickness: 6 mm

Accessories: -

Food Certification: FDA - EU



Standard executions

Belt material	Belt color	Pin
POM	White - blue	POM

Other materials and colors are available upon request.

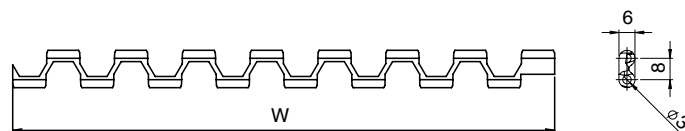
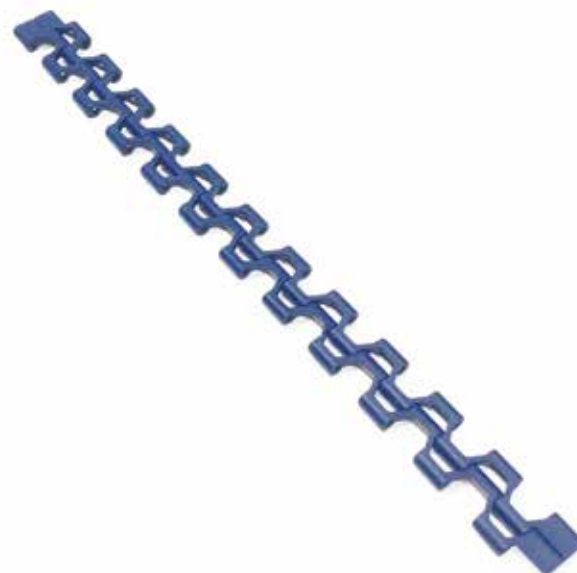
Belt material	Pin material	Belt performance [N/m]	Temperature range [°C]	Certification	Weight [kg/m ²]
POM	PA	2550	-43 ÷ +80	FDA - EU	0,8

PP = Polypropylene - PE = Polyethylene - POM = Acetal Resin - PA = Polyamide

Belt width [W]

Minimum [mm]	Standard increment [mm]	Special increment [mm]	Width tolerance* [mm]
101,6	Multiple: 152,4	Multiple: 25,4	+/-2 up to 300
			+/-3 up to 600
			+/-4 more than 600

*It is advisable to consider dimensional variations in width based on operating temperatures and humidity when the belt is made of polyamide.



Part number

NMMP 80 FG -PO -B

Type

Pitch

Open flat surface flush grid

Belt color: W = white / B = blue

Belt material:
PO = POM - Acetal Resin / PA = Polyamide

Sprockets for MP80 type



Teeth nr.	Dp [mm]	Do [mm]	A [mm]	B [mm]	Available standard bore	
					Square [mm]	Ø round + set-screw UNI
18	46,5	47,7	20	6	20x20	20 - 25
24	61,8	63,3	20	6	25x25	20 - 25 - 30
36	92,6	94,5	20	6	40x40	25 - 30

Standard material: nylon PA6 fiberglass.
 It is possible to supply sprocket with any number of teeth or any material by CNC machining
 Dp = Pitch diameter
 Do = External tooth diameter

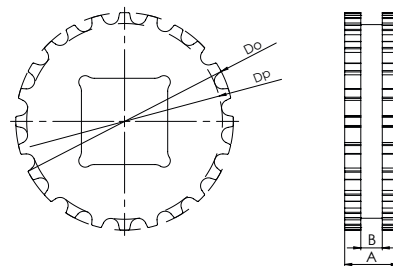
Part number NSMP80 -Q 25 -Z24

Type _____

Bore type: R = round / Q = square _____

Bore dimension (mm) _____

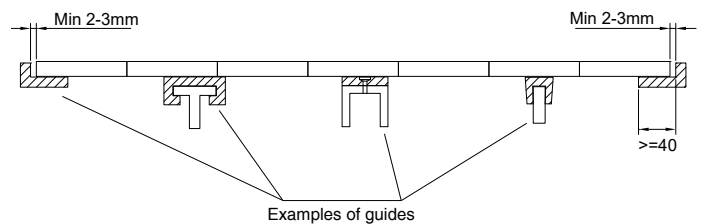
Teeth nr. _____



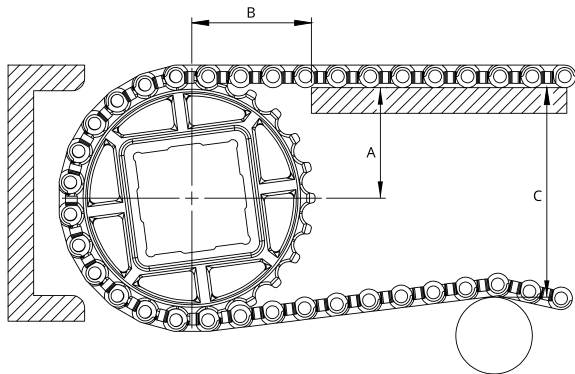
Belt width [mm]			101,6	203,2	304,8	406,4	508	609,6	711,2	812,8	914,4	1016	1117,6	1219,2	1320,8
Number of sprockes	Drive shaft	Minimum number of sprockets	2	3	4	4	5	6	8	9	10	11	13	15	17
	Driven shaft		2	2	3	3	4	5	7	7	9	9	11	11	11
Sliding guides			2	2	3	3	4	5	5	6	6	7	7	8	8

Mounting

When mounting the sprockets, make sure that you have mounted all sprockets oriented in the same phase.
 Only axially lock the central sprocket and leave the other sprockets free to move axially

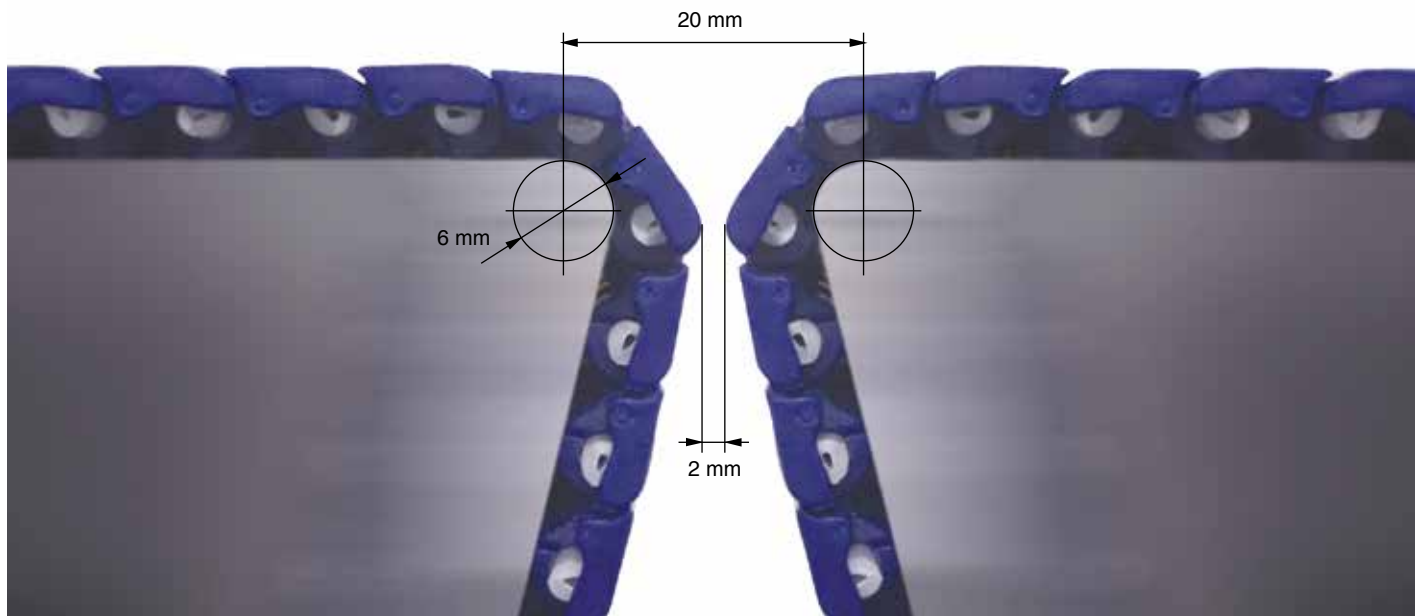
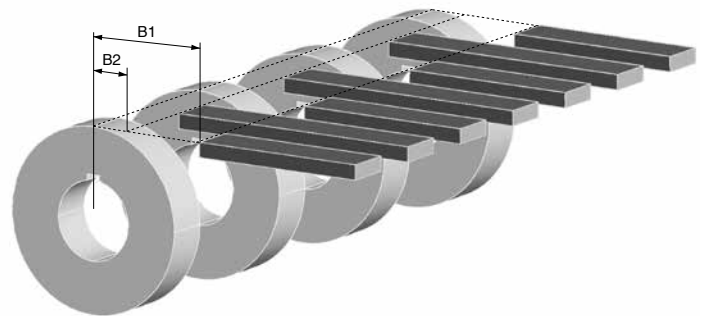


Sprockets for MP80 type



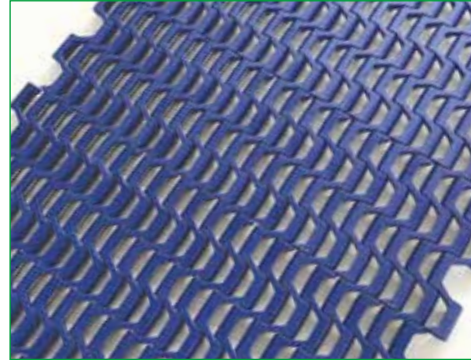
Z [mm]	A [mm]	B1 [mm]	B2 [mm]	C _{max} [mm]
18	20,2	28	12	40
24	27,9	35	12	50
36	43,3	50	12	80

In order to avoid any subsidence of the belt in the area between the guiding strip and the sprockets, it is possible to locate the guides between the sprockets. Two minimum B1 and B2 dimensions are defined.



PITCH 12,7 mm / 0,5"

Belt type: open flat surface
Pin diameter: Ø 3,6 mm
Open area: 50%
Hole openings: 20x7 mm
Minimum width: 203 mm
Thickness: 7 mm
Nose bar diameter: 12,7 mm
Accessories: -
Food Certification: FDA - EU



Standard executions

Belt material	Belt color	Pin
POM	Blue - white	PA - PP
PP	Blue - white	POM - PP

Other materials and colors are available upon request.

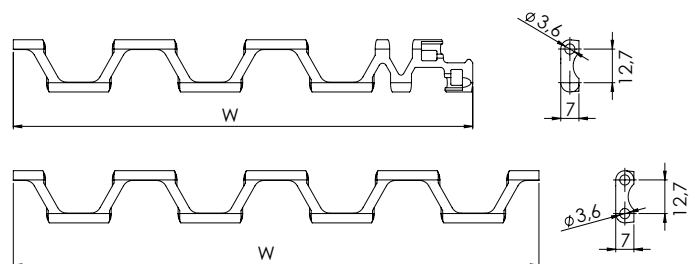
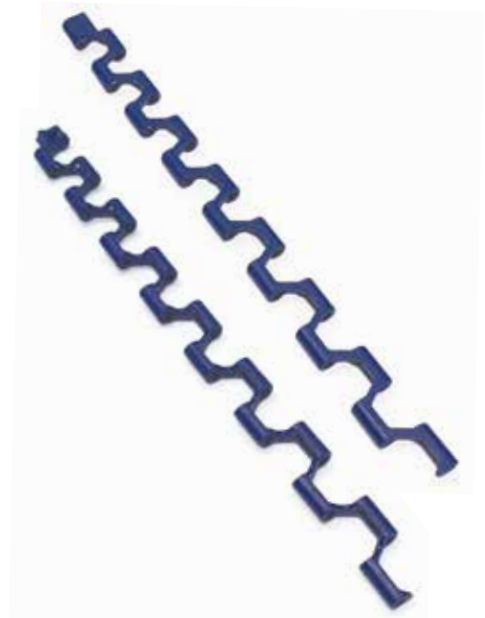
Belt material	Pin material	Belt performance [N/m]	Temperature range [°C]	Certification	Weight [kg/m²]
PP	PP	2700	+5 ÷ +70	FDA - EU	0,9
POM	PP	4200	+5 ÷ +70	FDA - EU	1,2
POM	PA	4500	-40 ÷ +70	FDA - EU	1,2

PP = Polypropylene - PE = Polyethylene - POM = Acetal Resin - PA = Polyamide

Belt width [W]

Minimum [mm]	Standard increment [mm]	Special increment [mm]	Width tolerance* [mm]
203	Multiple: 50,8	Multiple: 12,7	+/-2 up to 300
			+/-3 up to 600
			+/-4 more than 600

*It is advisable to consider dimensional variations in width based on operating temperatures and humidity when the belt is made of polyamide.



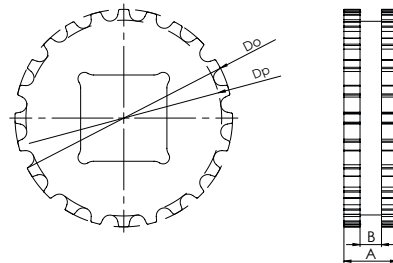
Part number	NMMD 127 G50 -PP -B	
Type		Belt color: B = blue / W = white
Pitch		Belt material: PO = POM - Acetal Resin / PP = Polypropylene PA = Polyamide
Open flat surface at 50%		

Sprockets for MD127G50 type



Teeth nr.	Dp [mm]	Do [mm]	A [mm]	B [mm]	Available standard bore	
					Square [mm]	Ø round + set-screw UNI
12	49,8	52,0	20	10	25x25	20 - 25
14	58,0	60,2	20	10	25x25	20 - 25
17	70,2	72,4	20	10	25x25	20 - 25
19	78,4	80,5	20	10	25x25	25 - 30
24	98,8	100,9	20	10	25x25 40x40	25 - 30
36	148,0	150,0	20	10	25x25 40x40	25 - 30

Standard material: delrin.
 It is possible to supply sprocket with any number of teeth or any material by CNC machining
 Dp = Pitch diameter
 Do = External tooth diameter



Part number NSMD127 -Q 25 -Z24

Type _____

Bore type: R = round / Q = square _____

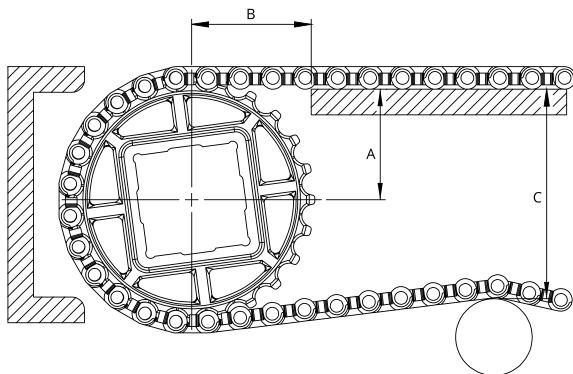
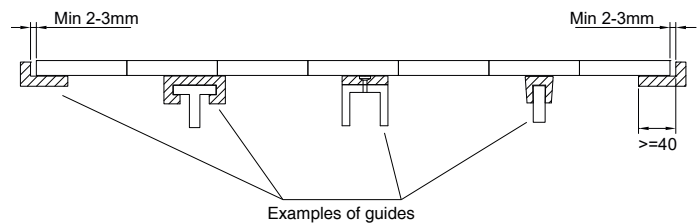
Bore dimension (mm) _____

Teeth nr. _____

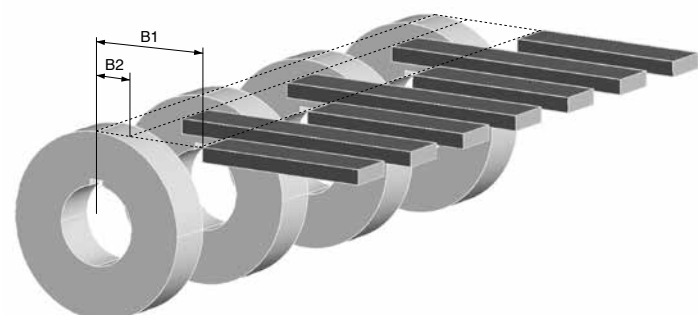
Belt width [mm]			101,6	203,2	304,8	406,4	508	609,6	711,2	812,8	914,4	1016	1117,6	1219,2	1320,8
Number of sprockes	Drive shaft	Minimum number of sprockets	2	3	4	4	5	6	8	9	10	11	13	15	17
	Driven shaft		2	2	3	3	4	5	7	7	9	9	11	11	11
Sliding guides			2	2	3	3	4	5	5	6	6	7	7	8	8

Mounting

When mounting the sprockets, make sure that you have mounted all sprockets oriented in the same phase.
 Only axially lock the central sprocket and leave the other sprockets free to move axially.



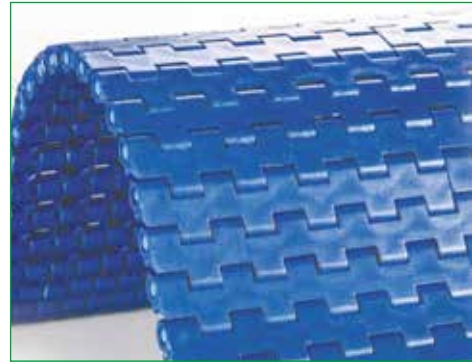
Type	Z [mm]	A [mm]	B1 [mm]	B2 [mm]	C _{max} [mm]
NMMD127G50	12	21,4	35	14	42
	14	25,5	37	14	50
	17	31,6	39	14	62
	19	35,7	40	14	70
	24	45,9	43	14	90
	36	69,5	53	14	130



In order to avoid any subsidence of the belt in the area between the guiding strip and the sprockets, it is possible to locate the guides between the sprockets. Two minimum B1 and B2 dimensions are defined.

PITCH 12,7 mm / 0,5"

Belt type: closed flat top surface
Pin diameter: Ø 4,6 mm
Open area: 0%
Hole openings: -
Minimum width: 50 mm
Thickness: 10 mm
Nose bar diameter: 18-20 mm
Accessories: flights
Food Certification: FDA - EU



Standard executions

Belt material	Belt color	Pin
POM	Blue	Nylon
PP	Blue	POM

Other materials and colors are available upon request.

Belt material	Pin material	Belt performance [N/m]	Temperature range [°C]	Certification	Weight [kg/m ²]
PP	PP	11550	+5 ÷ +90	FDA - EU	4,75
PE	PE	7000	-73 ÷ +66	FDA - EU	5,00
POM	POM	16800	-43 ÷ +70	FDA - EU	7,10
POM	PA	17000	-40 ÷ +80	FDA - EU	6,90
POM	PP	16000	+5 ÷ +70	FDA - EU	6,90

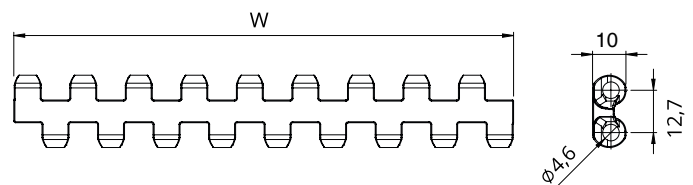
PP = Polypropylene - PE = Polyethylene - POM = Acetal Resin - PA = Polyamide



Belt width [W]

Minimum [mm]	Standard increment [mm]	Special increment [mm]	Width tolerance* [mm]
50	Multiple: 50	Multiple: 16,7	+/-2 up to 300
			+/-3 up to 600
			+/-4 more than 600

**It is advisable to consider dimensional variations in width based on operating temperatures and humidity when the belt is made of polyamide.*



Part number	NMEC 127 C -PO -B	
Type	Belt color: B = blue	
Pitch	Belt material: PO = POM - Acetal Resin / PP = Polypropylene PE = Polyethylene / PA = Polyamide	
Closed flat top surface		

NMEC127FG

PITCH 12,7 mm / 0,5"

STRAIGHT MODULAR BELTS

Belt type: open flat surface flush grid

Pin diameter: Ø 4,6 mm

Open area: 20%

Hole openings: 3x6 mm

Minimum width: 50 mm

Thickness: 10 mm

Nose bar diameter: 18-20 mm

Accessories: flights

Food Certification: FDA - EU



Standard executions

Belt material	Belt color	Pin
POM	Blue	PA
PP	Blue	POM

Other materials and colors are available upon request.

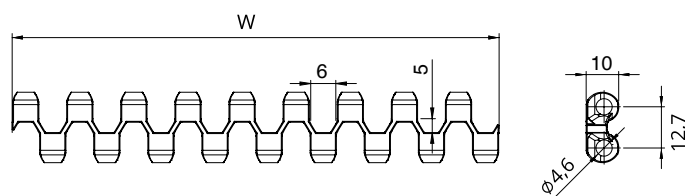
Belt material	Pin material	Belt performance [N/m]	Temperature range [°C]	Certification	Weight [kg/m ²]
PP	PP	10900	+5 ÷ +90	FDA - EU	4,3
POM	POM	16000	-43 ÷ +70	FDA - EU	6,3
POM	PA	16200	-40 ÷ +80	FDA - EU	6,0
POM	PP	15200	+5 ÷ +70	FDA - EU	5,9

PP = Polypropylene - PE = Polyethylene - POM = Acetal Resin - PA = Polyamide

Belt width [W]

Minimum [mm]	Standard increment [mm]	Special increment [mm]	Width tolerance* [mm]
50	Multiple: 50	Multiple: 16,7	+/-2 up to 300
			+/-3 up to 600
			+/-4 more than 600

*It is advisable to consider dimensional variations in width based on operating temperatures and humidity when the belt is made of polyamide.



Part number

NMEC 127 FG -PO -B

Type

Pitch

Open flat surface flush grid

Belt color: B = blue

Belt material:
PO = POM - Acetal Resin / PP = Polypropylene
PA = Polyamide

PITCH 12,7 mm / 0,5"

- Belt type:** closed surface with rubber top insert
- Pin diameter:** Ø 4,6 mm
- Open area:** 0%
- Rubber hardness:** 50 Sh A, oil resistant
- Minimum width:** 50 mm
- Thickness:** 10+2,5 mm
- Nose bar diameter:** 18-20 mm
- Accessories:** flights
- Food Certification:** EU per colore white



Standard executions

Belt material	Belt color	Rubber color	Pin
PP	Gray	Black	POM-PP
PP	White	White	POM-PP

Other materials and colors are available upon request.

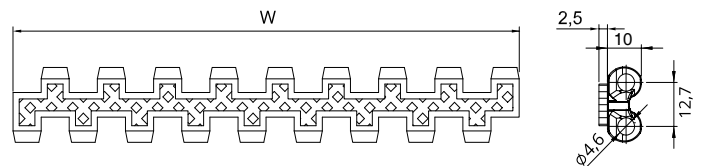
Belt material	Pin material	Belt performance [N/m]	Temperature range [°C]	Certification	Weight [kg/m ²]
PP	PP	10900	+5 ÷ +50	FDA - EU	5,1

PP = Polypropylene - PE = Polyethylene - POM = Acetal Resin - PA = Polyamide

Belt width [W]

Minimum [mm]	Standard increment [mm]	Special increment [mm]	Width tolerance* [mm]
50	Multiple: 50	Multiple: 16,7	+/-2 up to 300
			+/-3 up to 600
			+/-4 more than 600

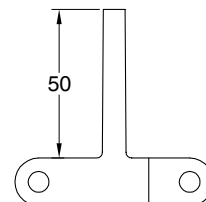
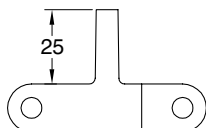
*It is advisable to consider dimensional variations in width based on operating temperatures and humidity when the belt is made of polyamide.



Part number	NMEC 127 GT -PP -G	
Type	Pitch	Belt color: G = gray / W = white
Closed surface with rubber top insert		Belt material: PO = POM - Acetal Resin / PP = Polypropylene

Accessories for EC127 type

Flights



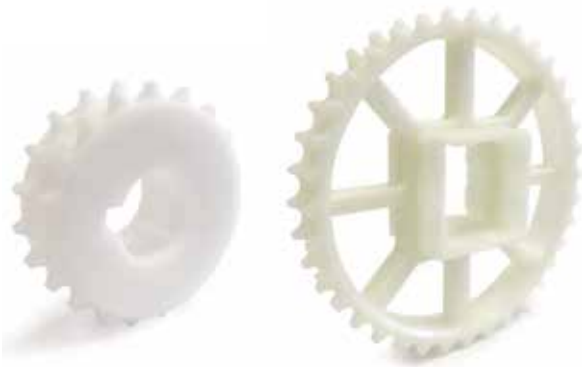
In case of need of flights the following table shows the standard indent. it is possible to have a special indent according to specific customer request.



Standard indent [mm]	Z	33	50	67	83

In the case of wide belts, one or more gaps is recommended between flights to allow the belt to be supported on the return path. The maximum width not supported by guides depends on several factors such as the load on the belt, possible incline of the conveyor, and belt or pin material.

Sprockets for EC127 type



Part number NSEC127 -Q 40 -Z24

Type _____

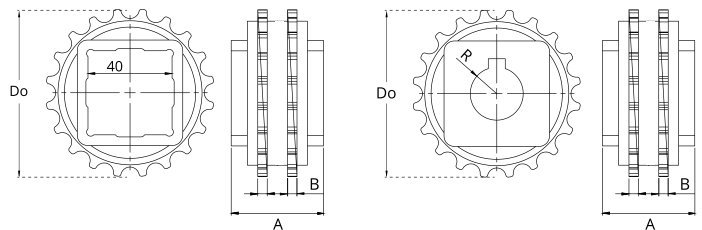
Bore type: R = round / Q = square _____

Bore dimension (mm) _____

Teeth nr. _____

Teeth nr.	Dp [mm]	Do [mm]	A [mm]	B [mm]	Available standard bore	
					Square [mm]	Ø round + set-screw UNI
19	77,3	78,1	40	3,5	40x40	20 - 25 - 30
24	97,6	99,0	40	3,5	40x40	20 - 25 - 30
28	113,9	115,3	40	3,5	40x40	25 - 30
30	122,0	123,4	40	3,5	40x40	25 - 30
36	146,4	147,9	40	3,5	40x40	25 - 30

Standard material: nylon PA6 fiberglass.
 It is possible to supply sprocket with any number of teeth or any material by CNC machining
 Dp = Pitch diameter
 Do = External tooth diameter

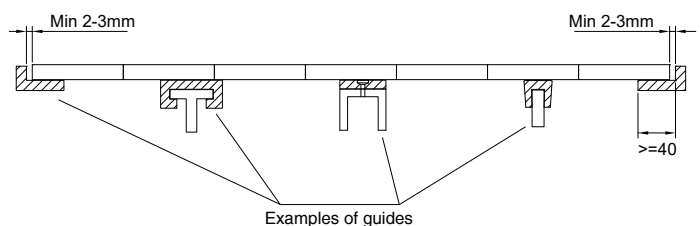


		Belt width [mm]													
		150	200	250	300	350	400	450	500	550	600	650	700	750	
Number of sprockes	Drive shaft	Belt tension ≤ 50% of the capacity	2	2	3	3	4	4	5	5	6	6	7	7	8
		Belt tension = 100% of the capacity	3	3	4	5	6	8	9	10	11	12	13	14	15
Driven shaft		2	2	2	2	2	2	3	3	3	3	4	4	4	
Sliding guides		2	2	3	3	3	4	4	4	5	5	5	6	6	

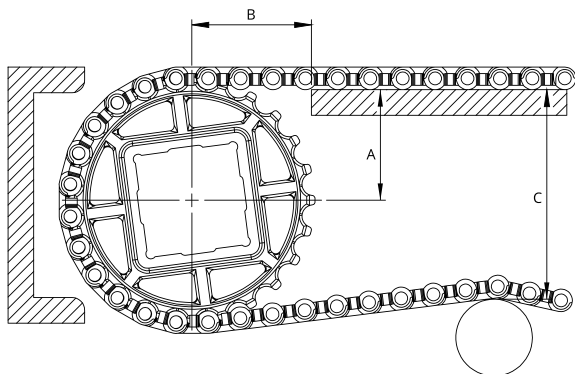
		Belt width [mm]													
		800	850	900	950	1000	1050	1100	1150	1200	1250	1300	1350	1400	
Number of sprockes	Drive shaft	Belt tension ≤ 50% of the capacity	8	9	9	10	10	11	11	12	12	13	13	14	14
		Belt tension = 100% of the capacity	15	16	17	18	19	20	21	22	23	24	25	26	27
Driven shaft		4	4	5	5	5	5	6	6	7	7	8	8	8	
Sliding guides		6	7	7	7	8	8	8	9	9	9	10	10	11	

Mounting

When mounting the sprockets, make sure that you have mounted all sprockets oriented in the same phase.
 Only axially lock the central sprocket and leave the other sprockets free to move axially.



Sprockets for EC127 type

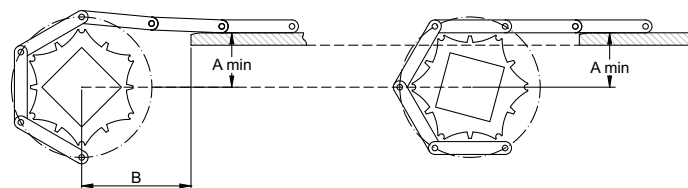
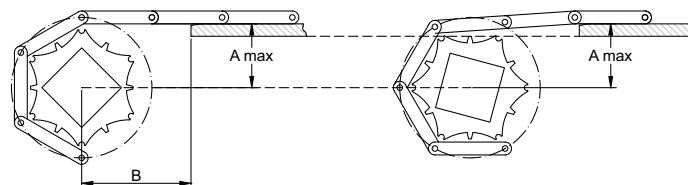


Type	Teeth nr.	A _{max} [mm]	A _{min} [mm]	B1 [mm]	B2 [mm]	C _{max} [mm]
NMEC127C	19	34,4	34,0	40	15	70
	24	44,8	44,4	43	15	90
	28	52,9	52,6	47	15	105
NMEC127FG	30	57,3	57,0	49	15	113
	36	70,0	68,8	53	15	137

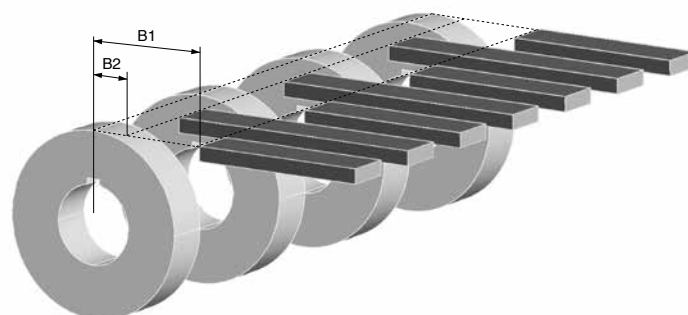
A_{max} = sliding surface position so that the height of the belt engaging the sprocket oscillates between the sliding surface height and a lower one. The height variation depends on the number of teeth and the pitch of the sprocket.

A_{min} = sliding surface position so that the height of the belt engaging the sprocket oscillates between the sliding surface height and a higher one. The height variation depends on the number of teeth and the pitch of the sprocket.

The choice of A dimensions depends on the items you have to carry. it is always suggested to make a chamfer at the end of the sliding guides.



In order to avoid any subsidence of the belt in the area between the guiding strip and the sprockets, it is possible to locate the guides between the sprockets. Two minimum B1 and B2 dimensions are defined.



PITCH 25,4 mm / 1"

Belt type: closed flat top surface
Pin diameter: Ø 5 mm
Open area: 0%
Hole openings: -
Minimum width: 152,4 mm
Thickness: 10 mm
Accessories: flights - side wall
Food Certification: FDA - EU



Standard executions

Belt material	Belt color	Pin
PP	White - blue	PP
PE	Blue	POM

Other materials and colors are available upon request.

Belt material	Pin material	Belt performance [N/m]	Temperature range [°C]	Certification	Weight [kg/m ²]
PP	PP	11700	+5 ÷ +90	FDA - EU	4,5
PE	PE	10500	-73 ÷ +66	FDA - EU	5,0
POM	POM	14600	-43 ÷ +70	FDA - EU	6,6
POM	PA	15700	-40 ÷ +80	FDA - EU	6,4
POM	PP	12900	+5 ÷ +70	FDA - EU	6,4

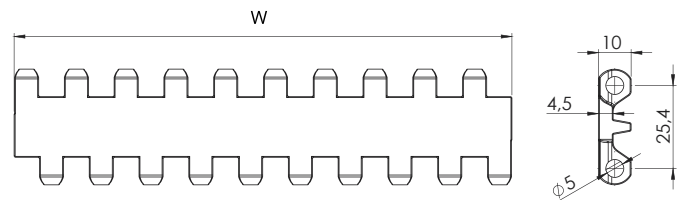
PP = Polypropylene - PE = Polyethylene - POM = Acetal Resin - PA = Polyamide



Belt width [W]

Minimum [mm]	Standard increment [mm]	Special increment [mm]	Width tolerance* [mm]
152,4	Multiple: 76,2	Multiple: 15,24	+/-2 up to 300
			+/-3 up to 600
			+/-4 more than 600

*It is advisable to consider dimensional variations in width based on operating temperatures and humidity when the belt is made of polyamide.



Part number	NMEC 254 C -PO -W
Type	Belt color: W = white / B = blue Belt material: PO = POM - Acetal Resin / PP = Polypropylene PE = Polyethylene / PA = Polyamide
Pitch	
Closed flat top surface	

NMEC254P16

PITCH 25,4 mm / 1"

STRAIGHT MODULAR BELTS

- Belt type:** open flat surface
- Pin diameter:** Ø 5 mm
- Open area:** 16%
- Hole openings:** 2,5x3,7 mm
- Minimum width:** 152,4 mm
- Thickness:** 10 mm
- Accessories:** flights - side wall
- Food Certification:** FDA - EU



Standard executions

Belt material	Belt color	Pin
PP	White - blue	PP
PE	Blue	POM

Other materials and colors are available upon request.

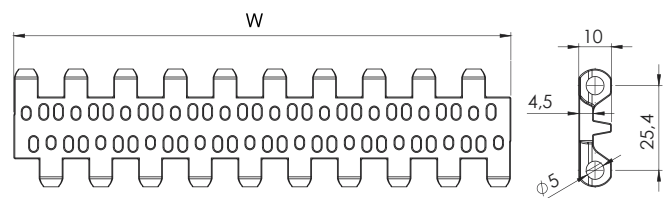
Belt material	Pin material	Belt performance [N/m]	Temperature range [°C]	Certification	Weight [kg/m²]
PP	PP	9360	+5 ÷ +90	FDA - EU	3,8
PE	PE	8500	-73 ÷ +66	FDA - EU	4,2
POM	POM	13100	-43 ÷ +70	FDA - EU	5,7
POM	PA	14000	-40 ÷ +80	FDA - EU	5,5
POM	PP	11500	+5 ÷ +70	FDA - EU	5,5

PP = Polypropylene - PE = Polyethylene - POM = Acetal Resin - PA = Polyamide

Belt width [W]

Minimum [mm]	Standard increment [mm]	Special increment [mm]	Width tolerance* [mm]
152,4	Multiple: 76,2	Multiple: 15,24	+/-2 up to 300
			+/-3 up to 600
			+/-4 more than 600

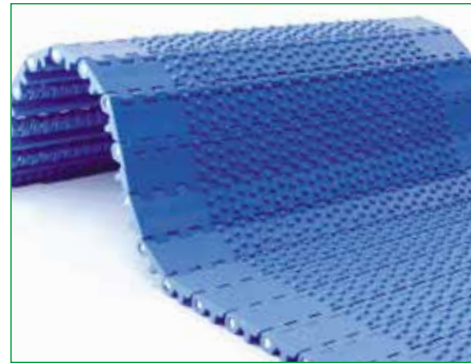
*It is advisable to consider dimensional variations in width based on operating temperatures and humidity when the belt is made of polyamide.



Part number	NMEC 254 P16 -PO -W	
Type	Belt color: W = white / B = blue	
Pitch	Belt material: PO = POM - Acetal Resin / PP = Polypropylene PE = Polyethylene / PA = Polyamide	
Open flat surface 16%		

PITCH 25,4 mm / 1"

Belt type: closed nub top surface
Pin diameter: Ø 5 mm
Open area: 0%
Hole openings: -
Minimum width: 152,4 mm
Thickness: 10+2 mm
Accessories: flights - side wall
Food Certification: FDA - EU



Standard executions

Belt material	Belt color	Pin
PP	White - blue	PP

Other materials and colors are available upon request.

Belt material	Pin material	Belt performance [N/m]	Temperature range [°C]	Certification	Weight [kg/m ²]
PP	PP	11700	+5 ÷ +90	FDA - EU	4,7
PE	PE	10500	-73 ÷ +66	FDA - EU	5,2
POM	POM	14600	-43 ÷ +70	FDA - EU	6,8
POM	PA	15700	-40 ÷ +80	FDA - EU	6,6
POM	PP	12900	+5 ÷ +70	FDA - EU	6,6

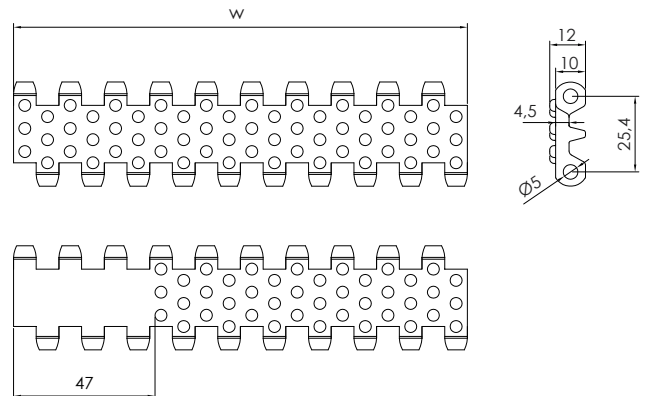
PP = Polypropylene - PE = Polyethylene - POM = Acetal Resin - PA = Polyamide



Belt width [W]

Minimum [mm]	Standard increment [mm]	Special increment [mm]	Width tolerance* [mm]
152,4	Multiple: 76,2	Multiple: 15,24	+/-2 up to 300
			+/-3 up to 600
			+/-4 more than 600

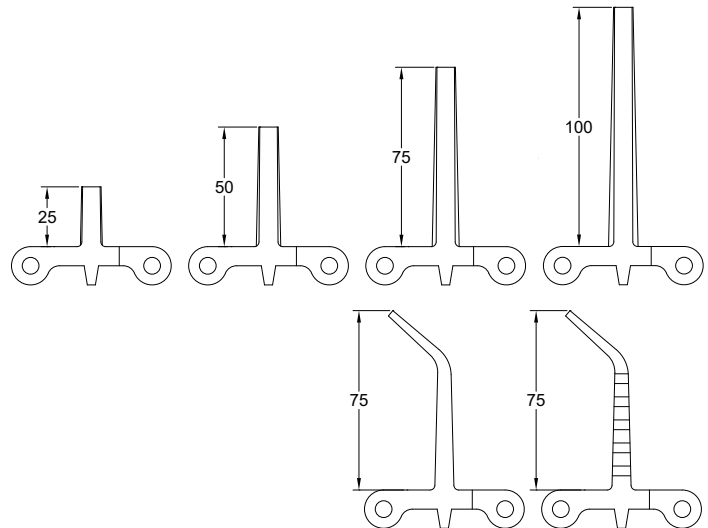
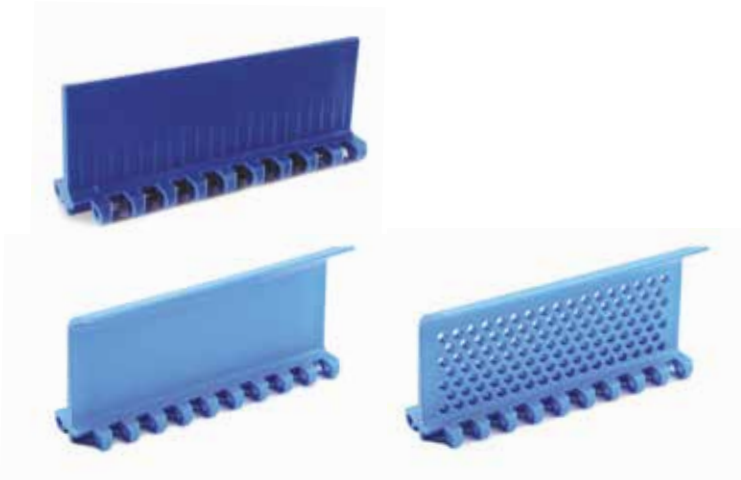
*It is advisable to consider dimensional variations in width based on operating temperatures and humidity when the belt is made of polyamide.



Part number	NMEC 254 NT -PP -B	
Type	Belt color: W = white / B = blue	
Pitch	Belt material: PO = POM - Acetal Resin / PP = Polypropylene PE = Polyethylene / PA = Polyamide	
Closed nub top surface		

Accessories for EC254 type

Flights



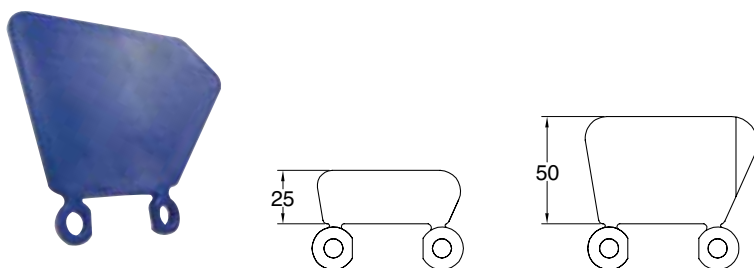
In case of need of flights the following table shows the standard indent. it is possible to have a special indent according to specific customer request.



Standard indent [mm]	Z	30	45	60	72

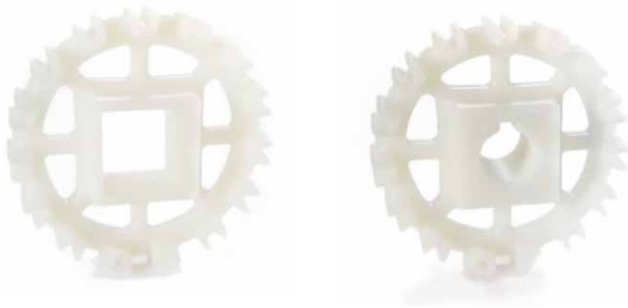
In the case of wide belts, one or more gaps is recommended between flights to allow the belt to be supported on the return path. The maximum width not supported by guides depends on several factors such as the load on the belt, possible incline of the conveyor, and belt or pin material.

Side wall



Inner and outer side wall indent [mm]	Y _i	16	23	30	38	46	53
	Y _e	23	30	37	45	53	60

Sprockets for EC254 type



Teeth nr.	Dp [mm]	Do [mm]	A [mm]	B [mm]	Available standard bore	
					Square [mm]	Ø round + set-screw UNI
8	68,4	64,6	40	30	25x25	25
10	82,2	83,0	40	30	40x40	25 - 30
12	98,1	98,0	40	30	40x40	25 - 30
15	122,2	123,0	40	30	40x40	25 - 30
18	146,3	147,5	40	30	40x40	25 - 30

Standard material: nylon PA6 fiberglass.
 It is possible to supply sprocket with any number of teeth or any material by CNC machining
 Dp = Pitch diameter
 Do = External tooth diameter

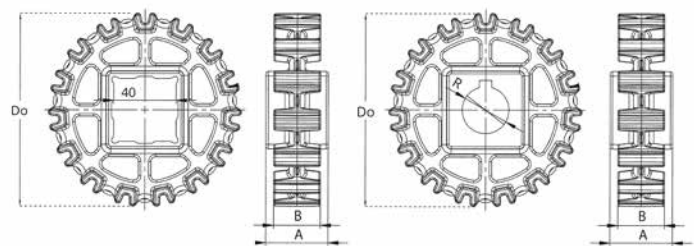
Part number **NSEC254 -Q 40 -Z12**

Type _____

Bore type: R = round / Q = square _____

Bore dimension (mm) _____

Teeth nr. _____

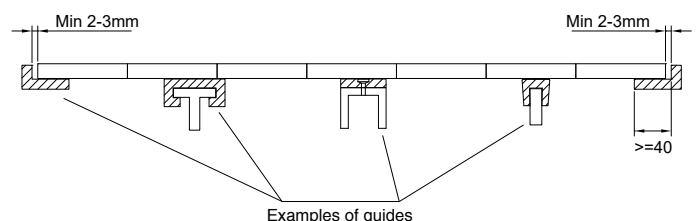


Belt width [mm]			152,4	228,6	304,8	381,0	457,2	533,4	609,6	685,8	762,0	838,2	914,4	990,6	1066,8
Number of sprockes	Drive shaft	Belt tension ≤ 50% of the capacity	2	2	3	4	5	5	6	6	7	7	8	8	9
		Belt tension = 100% of the capacity	2	3	4	5	6	7	8	9	10	11	13	14	15
Driven shaft			2	2	2	2	3	3	3	4	4	4	4	5	5
Sliding guides			2	3	3	4	4	5	5	6	6	7	7	8	8

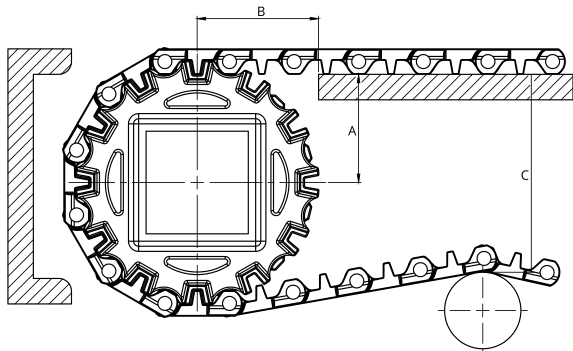
Belt width [mm]			1143,0	1219,2	1295,4	1371,6	1447,8	1524,0	1600,2	1676,4	1752,6	1828,8	1905	1981,2	2057,4
Number of sprockes	Drive shaft	Belt tension ≤ 50% of the capacity	9	10	10	11	11	12	12	12	13	14	14	15	15
		Belt tension = 100% of the capacity	16	17	18	19	20	21	22	23	25	26	27	28	29
Driven shaft			5	6	6	7	7	7	8	8	8	9	9	10	10
Sliding guides			9	9	10	10	11	11	12	12	13	13	14	14	15

Mounting

When mounting the sprockets, make sure that you have mounted all sprockets oriented in the same phase.
 Only axially lock the central sprocket and leave the other sprockets free to move axially.



Sprockets for EC254 type

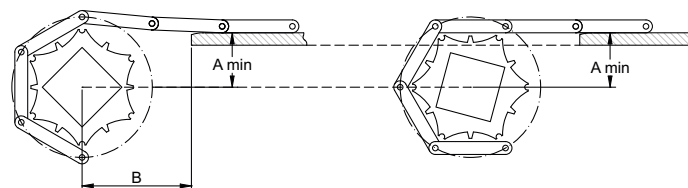
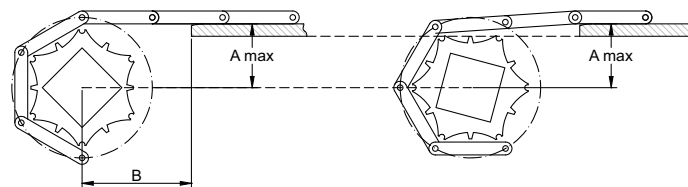


Teeth nr.	A_{max} [mm]	A_{min} [mm]	B1 [mm]	B2 [mm]	C_{max} [mm]
8	28,2	25,7	39	28	58
10	36,5	34,0	41	28	75
12	44,2	42,2	45	28	91
15	56,2	54,6	51	28	116
18	68,2	67,0	55	28	140

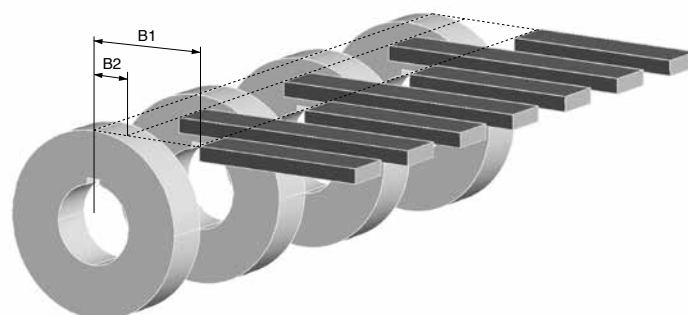
A_{max} = sliding surface position so that the height of the belt engaging the sprocket oscillates between the sliding surface height and a lower one. The height variation depends on the number of teeth and the pitch of the sprocket.

A_{min} = sliding surface position so that the height of the belt engaging the sprocket oscillates between the sliding surface height and a higher one. The height variation depends on the number of teeth and the pitch of the sprocket.

The choice of A dimensions depends on the items you have to carry. it is always suggested to make a chamfer at the end of the sliding guides.

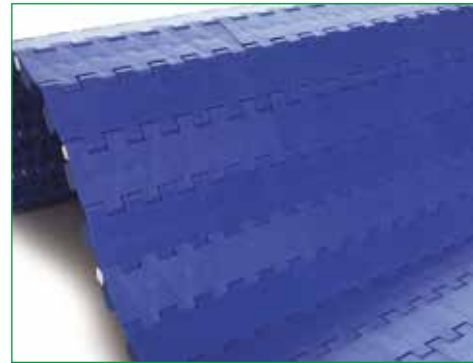


In order to avoid any subsidence of the belt in the area between the guiding strip and the sprockets, it is possible to locate the guides between the sprockets. Two minimum B1 and B2 dimensions are defined.



PITCH 25,4 mm / 1"

Belt type: closed flat top surface
Pin diameter: Ø 5 mm
Open area: 0%
Hole openings: -
Minimum width: 200 mm
Thickness: 10 mm
Accessories: flights - side wall
Food Certification: FDA - EU



Standard executions

Belt material	Belt color	Pin
PP	White - blue	PP
POM	White - blue	PA

Other materials and colors are available upon request.

Belt material	Pin material	Belt performance [N/m]	Temperature range [°C]	Certification	Weight [kg/m²]
PP	PP	14200	+5 ÷ +90	FDA - EU	6,1
PE	PE	7800	-73 ÷ +66	FDA - EU	7,1
POM	POM	19000	-43 ÷ +70	FDA - EU	9,4
POM	PA	20100	-40 ÷ +80	FDA - EU	9,2
POM	PP	16700	+5 ÷ +70	FDA - EU	9,2

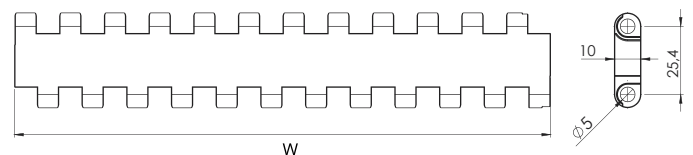
PP = Polypropylene - PE = Polyethylene - POM = Acetal Resin - PA = Polyamide



Belt width [W]

Minimum [mm]	Standard increment [mm]	Special increment [mm]	Width tolerance* [mm]
200	Multiple: 50	Multiple: 16,7	+/-2 up to 300
			+/-3 up to 600
			+/-4 more than 600

*It is advisable to consider dimensional variations in width based on operating temperatures and humidity when the belt is made of polyamide.



Part number	NMMD 254 C -PO -W	
Type	Belt color: W = white / B = blue	
Pitch	Belt material: PO = POM - Acetal Resin / PP = Polypropylene PE = Polyethylene / PA = Polyamide	
Closed flat top surface		

NMMD254FG

PITCH 25,4 mm / 1"

STRAIGHT MODULAR BELTS

- Belt type:** open flat surface flush grid
- Pin diameter:** Ø 5 mm
- Open area:** 35%
- Hole openings:** 5,5x7 mm
- Minimum width:** 200 mm
- Thickness:** 10 mm
- Accessories:** flights - side wall
- Food Certification:** FDA - EU



Standard executions

Belt material	Belt color	Pin
PP	White - blue - gray	PP
POM	Blue	PA

Other materials and colors are available upon request.

Belt material	Pin material	Belt performance [N/m]	Temperature range [°C]	Certification	Weight [kg/m ²]
PP	PP	14200	+5 ÷ +90	FDA - EU	5,7
PE	PE	7800	-73 ÷ +66	FDA - EU	6,6
POM	POM	19000	-43 ÷ +70	FDA - EU	8,8
POM	PA	20100	-40 ÷ +80	FDA - EU	8,6
POM	PP	16700	+5 ÷ +70	FDA - EU	8,6

PP = Polypropylene - PE = Polyethylene - POM = Acetal Resin - PA = Polyamide

Belt width [W]

Minimum [mm]	Standard increment [mm]	Special increment [mm]	Width tolerance* [mm]
200	Multiple: 50	Multiple: 16,7	+/-2 up to 300
			+/-3 up to 600
			+/-4 more than 600

*It is advisable to consider dimensional variations in width based on operating temperatures and humidity when the belt is made of polyamide.



Part number

NMMD 254 FG -PO -W

Type _____

Pitch _____

Open flat surface flush grid _____

Belt color: W = white / B = blue / G = gray

Belt material:
 PO = POM - Acetal Resin / PP = Polypropylene
 PE = Polyethylene / PA = Polyamide

PITCH 25,4 mm / 1"

Belt type: open flat surface
Pin diameter: Ø 5 mm
Open area: 48%
Hole openings: 9x13,5 e 6x16,5
Minimum width: 203,4 mm
Thickness: 11 mm
Accessories: -
Food Certification: FDA - EU



Standard executions

Belt material	Belt color	Pin
POM	White - blue	PA
PHT	Black	AISI 304

Other materials and colors are available upon request.

Belt material	Pin material	Belt performance [N/m]	Temperature range [°C]	Certification	Weight [kg/m ²]
PP	PP	8400	+5 ÷ +90	FDA - EU	5,0
POM	PA	15100	-40 ÷ +80	FDA - EU	6,6
POM	PP	12400	+5 ÷ +70	FDA - EU	6,6
PHT	AISI 304	13500	+10 ÷ +160	-	8,1

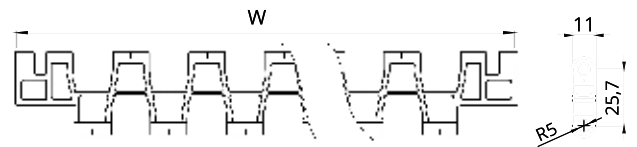
PP = Polypropylene - PE = Polyethylene - POM = Acetal Resin - PA = Polyamide



Belt width [W]

Minimum [mm]	Standard increment [mm]	Special increment [mm]	Width tolerance* [mm]
203,4	Multiple: 33,8	-	+/-2 up to 300
			+/-3 up to 600
			+/-4 more than 600

*It is advisable to consider dimensional variations in width based on operating temperatures and humidity when the belt is made of polyamide.



Part number

NMMD 254 G48 -PO -W

Type _____
 Pitch _____
 Open flat surface at 48%

Belt color: W = white / B = blue / K = black

Belt material:
 PO = POM - Acetal Resin / PP = Polypropylene
 HT = PHT - Compound for high temperature

NMMD254GT

PITCH 25,4 mm / 1"

STRAIGHT MODULAR BELTS

- Belt type:** closed grip top surface - indent 50 mm
- Pin diameter:** Ø 5 mm
- Open area:** 0%
- Hole openings:** -
- Minimum width:** 100 mm
- Thickness:** 10+4 mm
- Accessories:** flights - side wall
- Food Certification:** FDA - EU



Standard executions

Belt material	Belt color	Rubber color	Pin
PP	White	White	PP-POM
PP	Blue	Black	PP-POM

Other materials and colors are available upon request.

Belt material	Pin material	Belt performance [N/m]	Temperature range [°C]	Certification	Weight [kg/m ²]
PP	PP	14200	+5 ÷ +50	FDA - EU	6,9
PE	PE	7800	-10 ÷ +50	FDA - EU	8,0

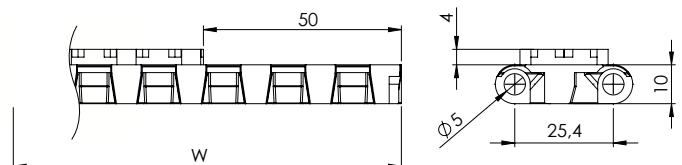
PP = Polypropylene - PE = Polyethylene - POM = Acetal Resin - PA = Polyamide



Belt width [W]

Minimum [mm]	Standard increment [mm]	Special increment [mm]	Width tolerance* [mm]
200	Multiple: 50	Multiple: 16,7	+/-2 up to 300
			+/-3 up to 600
			+/-4 more than 600

*It is advisable to consider dimensional variations in width based on operating temperatures and humidity when the belt is made of polyamide.



Part number

NMMD 254 GT -PP -W

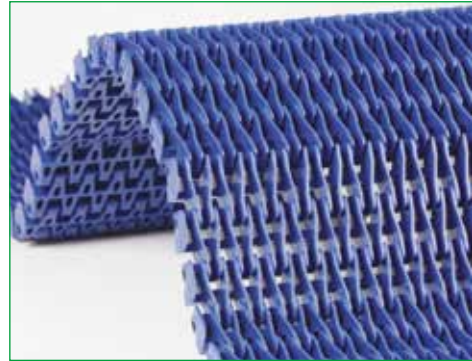
Type _____
 Pitch _____
 Closed grip top surface - indent 50 mm

Belt color: W = white / B = blue

Belt material:
 PO = POM - Acetal Resin / PP = Polypropylene
 PE = Polyethylene

PITCH 25,4 mm / 1"

Belt type: open flat surface rised rib
Pin diameter: Ø 5 mm
Open area: 35%
Surface contact with the product: 12%
Minimum width: 100 mm
Thickness: 16 mm
Accessories: loading and unloading comb
Food Certification: FDA - EU



Standard executions

Belt material	Belt color	Pin
PP	White - Blue	PP-POM
POM	Blue	POM-PA

Other materials and colors are available upon request.

Belt material	Pin material	Belt performance [N/m]	Temperature range [°C]	Certification	Weight [kg/m ²]
PP	PP	14200	+5 ÷ +70	FDA - EU	5,2
PPH	PPH	14800	+5 ÷ +105	FDA - EU	5,2
POM	PA	20100	-43 ÷ +80	FDA - EU	8,0

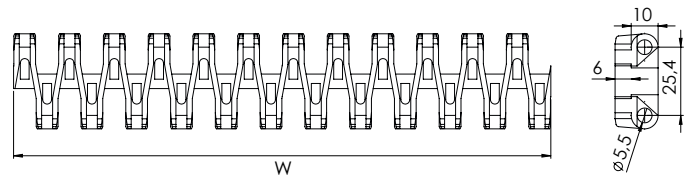
PP = Polypropylene - PE = Polyethylene - POM = Acetal Resin - PA = Polyamide



Belt width [W]

Minimum [mm]	Standard increment [mm]	Special increment [mm]	Width tolerance* [mm]
100	Multiple: 50	Multiple: 16,7	+/-2 up to 300
			+/-3 up to 600
			+/-4 more than 600

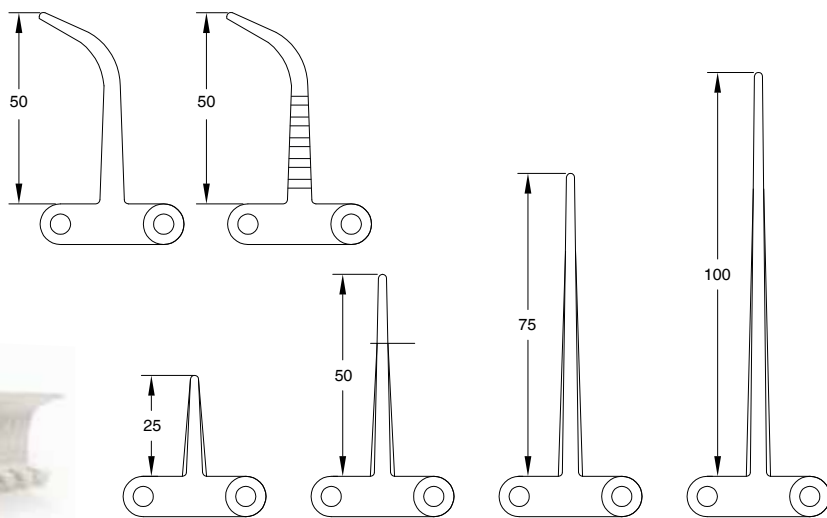
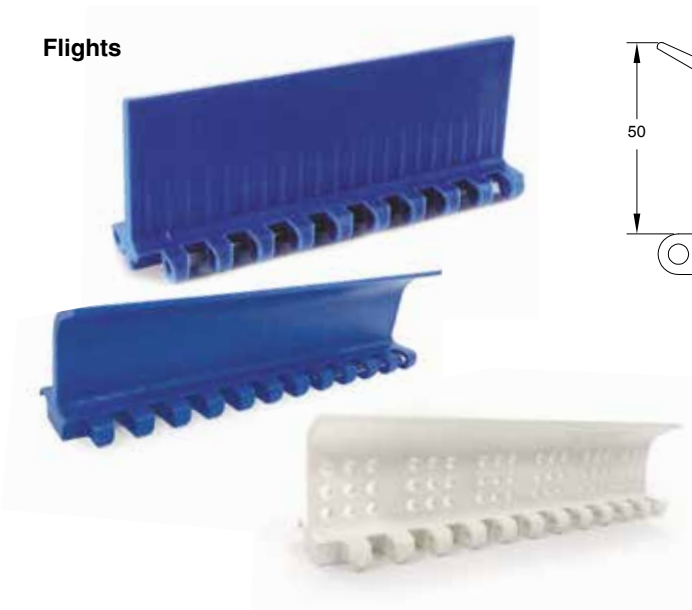
*It is advisable to consider dimensional variations in width based on operating temperatures and humidity when the belt is made of polyamide.



Part number	NMMD 254 RR -PP -W	
Type	Belt color: W = white / B = blue	
Pitch	Belt material: PO = POM - Acetal Resin / PP = Polypropylene HT = PHT - Compound for high temperature / PA = Polyamide	
Open flat surface rised rib		

Accessories for NMMD254C and NMMD254FG type

Flights



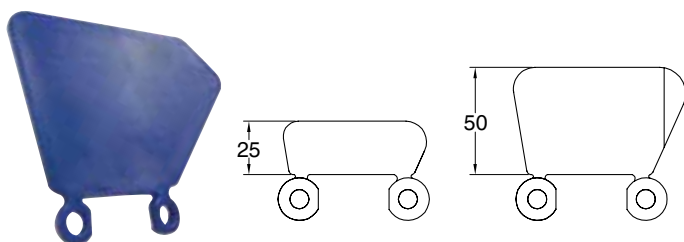
In case of need of flights the following table shows the standard indent. it is possible to have a special indent according to specific customer request.



Standard indent [mm]	Z	33	50	75

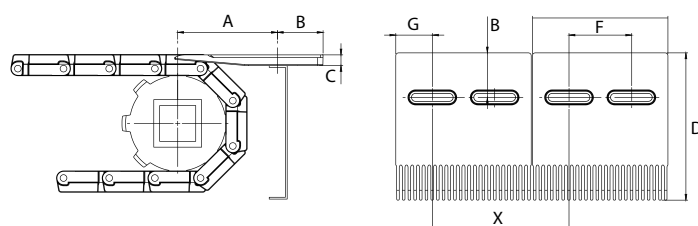
In the case of wide belts, one or more gaps is recommended between flights to allow the belt to be supported on the return path. The maximum width not supported by guides depends on several factors such as the load on the belt, possible incline of the conveyor, and belt or pin material.

Side wall



Inner and outer side wall indent [mm]	Y _i	25	33	41	50	58	66
	Y _e		34	42	50	59	67

Comb for belt NMMD254RR type



Quote [mm]	A	B	C	D	E	F	G	X
	105-115	25	12,5	146	150	75	37,5	155

Sprockets for MD254 type



Teeth nr.	Dp [mm]	Do [mm]	A [mm]	B [mm]	Available standard bore	
					Square [mm]	Ø round + set-screw UNI
8	68,4	67,7	40	6	25x25	25
10	82,8	85,7	40	6	40x40	25 - 30
12	98,9	102,0	40	6	40x40	25 - 30
15	123,1	126,0	40	6	40x40	25 - 30
18	147,4	152,3	40	6	40x40	25 - 30

Standard material: nylon PA6 fiberglass.
 It is possible to supply sprocket with any number of teeth or any material by CNC machining
 Dp = Pitch diameter
 Do = External tooth diameter

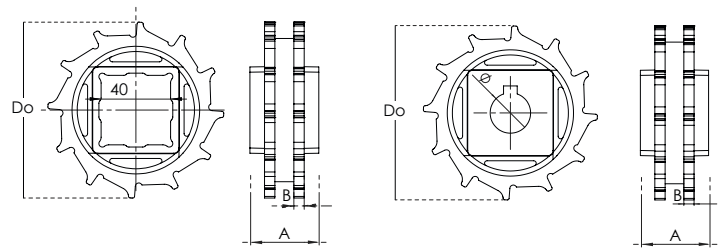
Part number NSMD254 -Q 40 -Z12

Type _____

Bore type: R = round / Q = square _____

Bore dimension (mm) _____

Teeth nr. _____

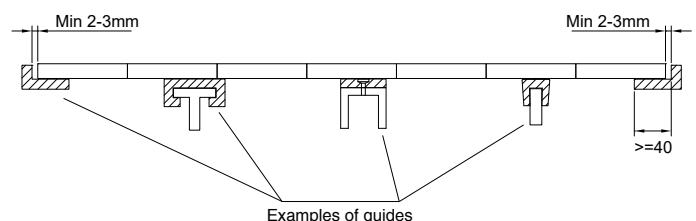


Belt width [mm]		200	300	400	500	600	700	800	900	1000	1100	1200	1400	1600	
Number of sprockes	Drive shaft	Belt tension ≤ 50% of the capacity	2	3	4	5	6	6	7	8	8	9	10	11	13
		Belt tension = 100% of the capacity	2	4	5	6	8	9	11	13	14	16	17	19	22
Driven shaft			2	2	3	3	3	4	4	4	5	5	6	6	7
Sliding guides			2	3	4	4	5	6	7	7	8	9	9	10	12

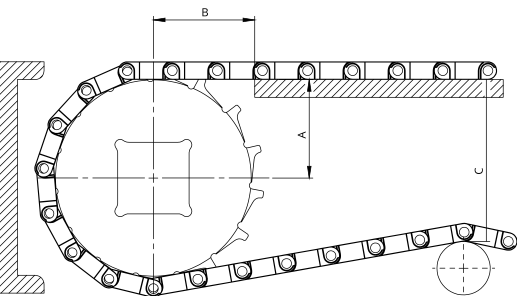
Belt width [mm]		1800	2000	2200	2400	2600	
Number of sprockes	Drive shaft	Belt tension ≤ 50% of the capacity	14	15	16	18	20
		Belt tension = 100% of the capacity	25	28	30	32	34
Driven shaft			8	9	10	11	12
Sliding guides			13	14	15	17	19

Mounting

When mounting the sprockets, make sure that you have mounted all sprockets oriented in the same phase.
 Only axially lock the central sprocket and leave the other sprockets free to move axially.



Sprockets for MD254 type

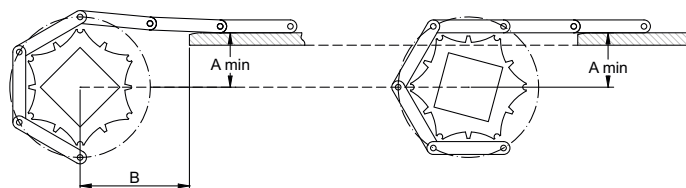
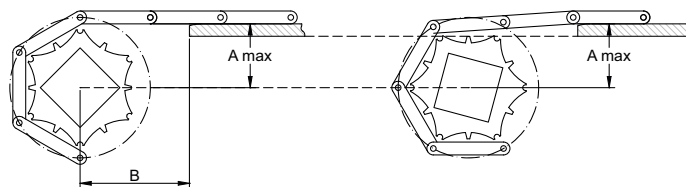


Teeth nr.	A_{max} [mm]	A_{min} [mm]	B1 [mm]	B2 [mm]	C_{max} [mm]
8	28,7	26,1	38	28	54
10	37,7	36,3	40	28	75
12	45,2	43,6	44	28	91
15	56,5	54,5	50	28	116
18	67,8	65,4	57	28	140

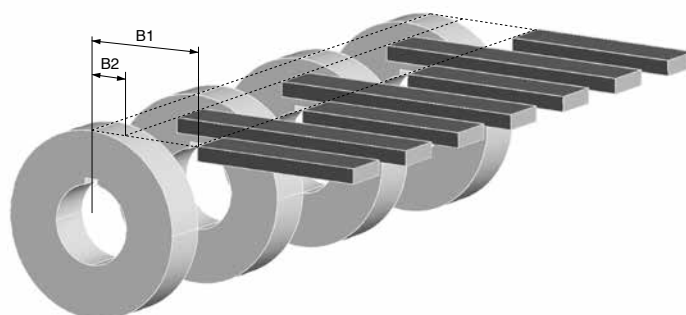
A_{max} = sliding surface position so that the height of the belt engaging the sprocket oscillates between the sliding surface height and a lower one. The height variation depends on the number of teeth and the pitch of the sprocket.

A_{min} = sliding surface position so that the height of the belt engaging the sprocket oscillates between the sliding surface height and a higher one. The height variation depends on the number of teeth and the pitch of the sprocket.

The choice of A dimensions depends on the items you have to carry. it is always suggested to make a chamfer at the end of the sliding guides.

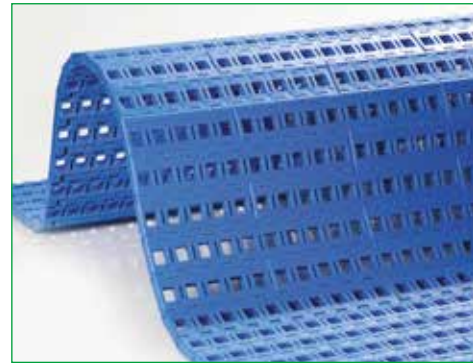


In order to avoid any subsidence of the belt in the area between the guiding strip and the sprockets, it is possible to locate the guides between the sprockets. Two minimum B1 and B2 dimensions are defined.



PITCH 25,4 mm / 1"

- Belt type:** open flat surface flush grid
- Pin diameter:** Ø 4,5 mm
- Open area:** 24%
- Hole openings:** 9,4x8,4 / 9,4x1,2 mm
- Minimum width:** 152,4 mm
- Thickness:** 8,8 mm
- Accessories:** flights - side wall



Standard executions

Belt material	Belt color	Pin
PP	Blue - white	PP
POM	Blue	PA

Other materials and colors are available upon request.

Belt material	Pin material	Belt performance [N/m]	Range di temperature [°C]	Weight [kg/m²]
PP	PP	11300	+5 ÷ +90	5,3
PE	PE	10000	-73 ÷ +66	5,4
POM	PA	22500	-40 ÷ +80	7,4
POM	PP	18100	+5 ÷ +70	7,4

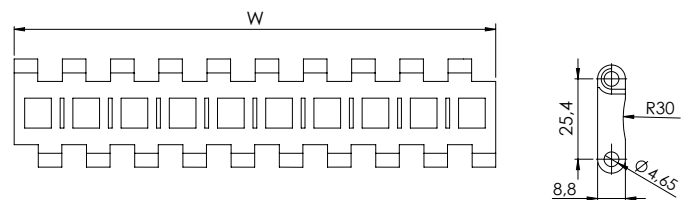
PP = Polypropylene - PE = Polyethylene - POM = Acetal Resin - PA = Polyamide



Belt width [W]

Minimum [mm]	Standard increment [mm]	Special increment [mm]	Width tolerance* [mm]
152,4	Multiple: 76,2	Multiple: 15,24	+/-2 up to 300
			+/-3 up to 600
			+/-4 more than 600

*It is advisable to consider dimensional variations in width based on operating temperatures and humidity when the belt is made of polyamide.



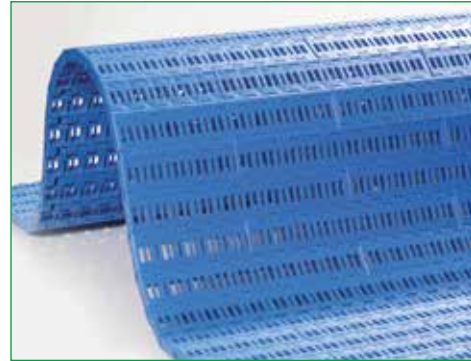
Part number	NMXP 254 FG -PP -W	
Type	Belt color: W = white / B = blue	
Pitch	Belt material: PO = POM - Acetal Resin / PP = Polypropylene PE = Polyethylene / PA = Polyamide	
Open flat surface flush grid		

NMXP254P22

PITCH 25,4 mm / 1"

STRAIGHT MODULAR BELTS

- Belt type:** flat perforated surface
- Pin diameter:** Ø 4,5 mm
- Open area:** 19%
- Hole openings:** 9,4x3 / 9,4x1,2 mm
- Minimum width:** 152,4 mm
- Thickness:** 8,8 mm
- Accessories:** flights - side wall



Standard executions

Belt material	Belt color	Pin
PP	Blue - white	PP
POM	Blue	PA

Other materials and colors are available upon request.

Belt material	Pin material	Belt performance [N/m]	Range di temperature [°C]	Weight [kg/m²]
PP	PP	13100	+5 ÷ +90	5,3
PE	PE	11600	-73 ÷ +66	5,5
POM	PA	25500	-40 ÷ +80	7,5
POM	PP	21000	+5 ÷ +70	7,5

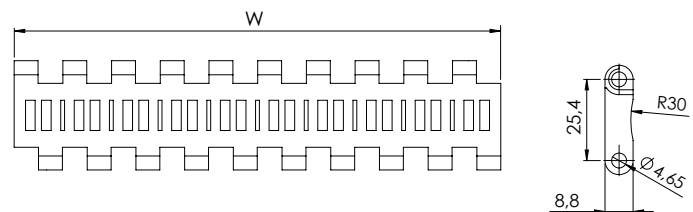
PP = Polypropylene - PE = Polyethylene - POM = Acetal Resin - PA = Polyamide



Belt width [W]

Minimum [mm]	Standard increment [mm]	Special increment [mm]	Width tolerance* [mm]
152,4	Multiple: 76,2	Multiple: 15,24	+/-2 up to 300
			+/-3 up to 600
			+/-4 more than 600

*It is advisable to consider dimensional variations in width based on operating temperatures and humidity when the belt is made of polyamide.



Part number	NMXP 254 P17 -PP -W	
Type		Belt color: W = white / B = blue
Pitch		Belt material: PO = POM - Acetal Resin / PP = Polypropylene PE = Polyethylene / PA = Polyamide
Flat perforated surface at 17%		

PITCH 25,4 mm / 1"

Belt type: closed flat top surface
Pin diameter: Ø 4,5 mm
Open area: 0%
Hole openings: -
Minimum width: 152,4 mm
Thickness: 8,8 mm
Accessories: flights - side wall



Standard executions

Belt material	Belt color	Pin
PP	Blue - white	PP
POM	Blue	PA

Other materials and colors are available upon request.



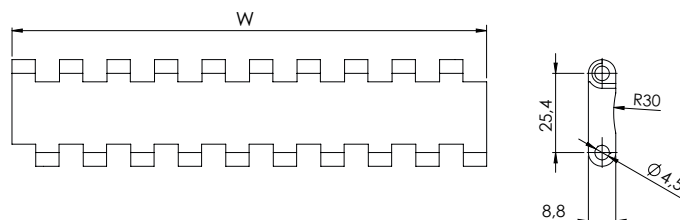
Belt material	Pin material	Belt performance [N/m]	Range di temperature [°C]	Weight [kg/m²]
PP	PP	13800	+5 ÷ +90	5,6
PE	PE	12100	-73 ÷ +66	5,8
POM	PA	26700	-40 ÷ +80	7,9
POM	PP	22000	+5 ÷ +70	7,9

PP = Polypropylene - PE = Polyethylene - POM = Acetal Resin - PA = Polyamide

Belt width [W]

Minimum [mm]	Standard increment [mm]	Special increment [mm]	Width tolerance* [mm]
152,4	Multiple: 76,2	Multiple: 15,24	+/-2 up to 300
			+/-3 up to 600
			+/-4 more than 600

*It is advisable to consider dimensional variations in width based on operating temperatures and humidity when the belt is made of polyamide.



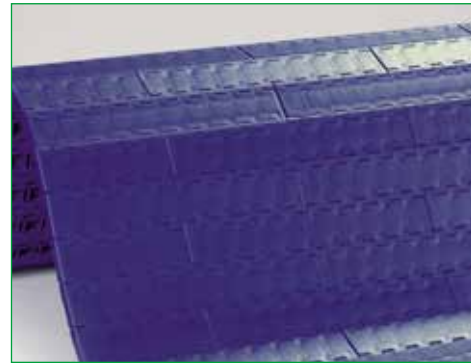
Part number	NMXP 254 C -PP -W
Type	Belt color: W = white / B = blue Belt material: PO = POM - Acetal Resin / PP = Polypropylene PE = Polyethylene / PA = Polyamide
Pitch	
Closed flat top surface	

NMXP254CL

PITCH 25,4 mm / 1''

STRAIGHT MODULAR BELTS

- Belt type:** closed flat top surface
- Pin diameter:** Ø 4,5 mm
- Open area:** 0%
- Hole openings:** -
- Minimum width:** 152,4 mm
- Thickness:** 8,8 mm
- Accessories:** flights - side wall



Standard executions

Belt material	Belt color	Pin
POM	Blue / yellow	PA

Other materials and colors are available upon request.

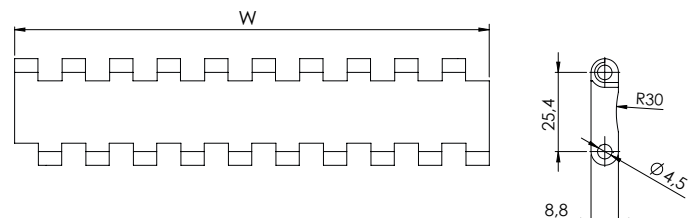
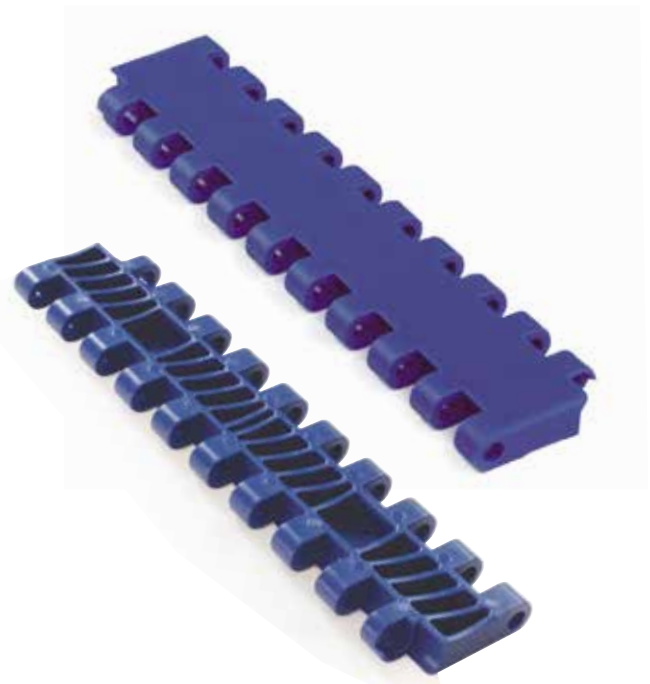
Belt material	Pin material	Belt performance [N/m]	Range di temperature [°C]	Weight [kg/m ²]
PP	PP	14700	+5 ÷ +90	5,6
PE	PE	12900	-73 ÷ +66	5,8
POM	PA	28400	-40 ÷ +80	7,9
POM	PP	23400	+5 ÷ +70	7,9

PP = Polypropylene - PE = Polyethylene - POM = Acetal Resin - PA = Polyamide

Belt width [W]

Minimum [mm]	Standard increment [mm]	Special increment [mm]	Width tolerance* [mm]
152,4	Multiple: 76,2	-	+/-2 up to 300
			+/-3 up to 600
			+/-4 more than 600

*It is advisable to consider dimensional variations in width based on operating temperatures and humidity when the belt is made of polyamide.



Part number

NMXP 254 CL -PP -W

Type

Pitch

Closed flat top surface

Belt color: B = blue / Y = yellow

Belt material:
PO = POM - Acetal Resin / PP = Polypropylene
PE = Polyethylene / PA = Polyamide

PITCH 25,4 mm / 1"

- Belt type:** no slip closed surface
- Pin diameter:** Ø 4,5 mm
- Open area:** 0%
- Hole openings:** -
- Minimum width:** 152,4 mm
- Thickness:** 8,8+0,5 mm
- Accessories:** flights - side wall



Standard executions

Belt material	Belt color	Pin
POM	Blue / yellow	PA

Other materials and colors are available upon request.

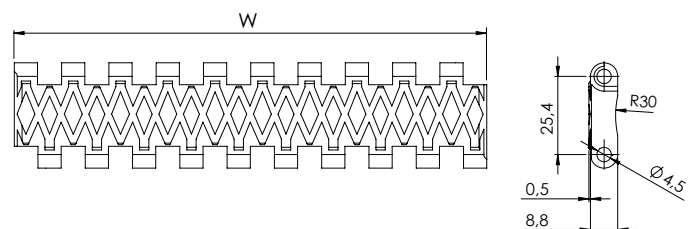
Belt material	Pin material	Belt performance [N/m]	Range di temperature [°C]	Weight [kg/m²]
PP	PP	14700	+5 ÷ +90	5,7
PE	PE	12900	-73 ÷ +66	5,9
POM	PA	28400	-40 ÷ +80	8,0
POM	PP	23400	+5 ÷ +70	8,0

PP = Polypropylene - PE = Polyethylene - POM = Acetal Resin - PA = Polyamide

Belt width [W]

Minimum [mm]	Standard increment [mm]	Special increment [mm]	Width tolerance* [mm]
152,4	Multiple: 76,2	-	+/-2 up to 300
			+/-3 up to 600
			+/-4 more than 600

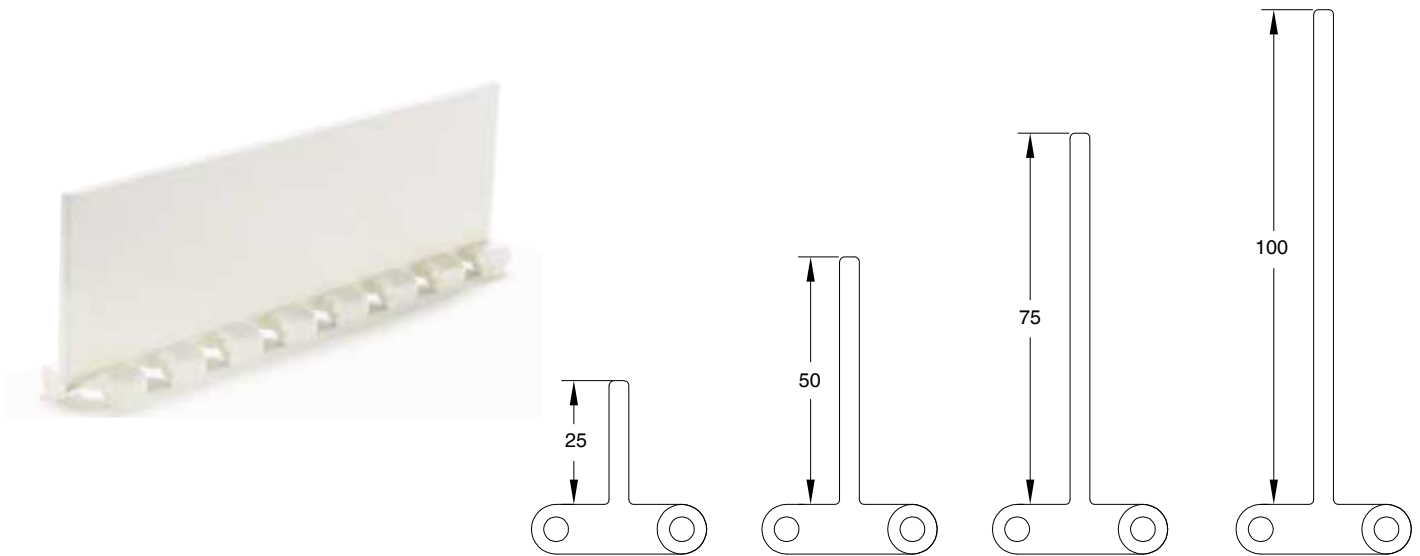
*It is advisable to consider dimensional variations in width based on operating temperatures and humidity when the belt is made of polyamide.



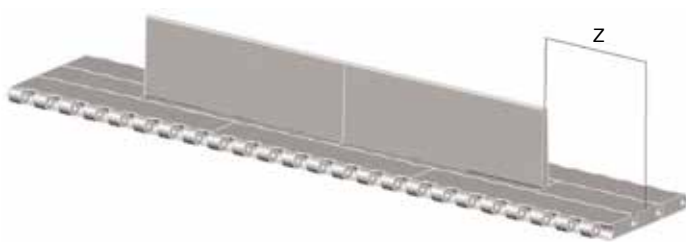
Part number	NMXP 254 CR -PO -B	
Type	No slip closed surface	
Pitch	Pitch 25,4 mm / 1"	
Belt color:	Belt color: B = blue / Y = yellow	
Belt material:	PO = POM - Acetal Resin / PP = Polypropylene PE = Polyethylene / PA = Polyamide	

Accessories for XP254 type

Flights



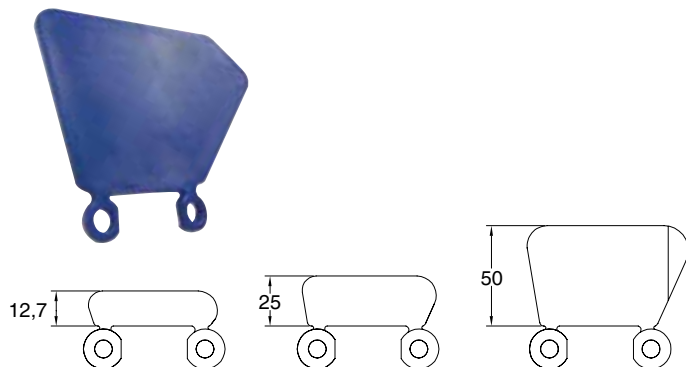
In case of need of flights the following table shows the standard indent. it is possible to have a special indent according to specific customer request.



Standard indent [mm]	Z	30,4	45,6	60,8
----------------------	---	------	------	------

In the case of wide belts, one or more gaps is recommended between flights to allow the belt to be supported on the return path. The maximum width not supported by guides depends on several factors such as the load on the belt, possible incline of the conveyor, and belt or pin material.

Side wall



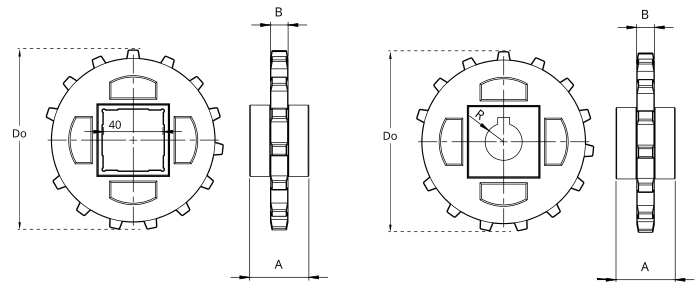
Inner and outer side wall indent [mm]	Y _i	16	23	30	38	46	53
	Y _e	26	33	40	48	56	63

Sprockets for XP254 type



Teeth nr.	Dp [mm]	Do [mm]	A [mm]	B [mm]	Available standard bore	
					Square [mm]	Ø round + set-screw UNI
10	82,2	81	25	8	40x40	25 - 30
12	98,1	97	25	8	40x40	25 - 30
15	122,2	122	25	8	40x40 - 60x60	25 - 30
18	146,3	146	25	8	40x40 - 60x60	25 - 30

Standard material: nylon PA6 fiberglass.
 It is possible to supply sprocket with any number of teeth or any material by CNC machining
 Dp = Pitch diameter
 Do = External tooth diameter



Part number **NSXP254 -Q 40 -Z12**

Type _____

Bore type: R = round / Q = square _____

Bore dimension (mm) _____

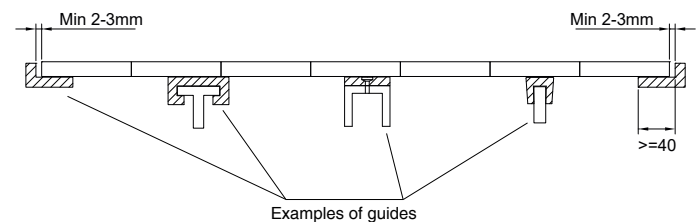
Teeth nr. _____

Belt width [mm]			152,4	228,6	304,8	381,0	457,2	533,4	609,6	685,8	762,0	838,2	914,4	990,6	1066,8
Number of sprockes	Drive shaft	Belt tension ≤ 50% of the capacity	2	2	3	4	5	5	6	6	7	7	8	8	9
		Belt tension = 100% of the capacity	2	3	4	5	6	7	8	9	10	11	13	14	15
Driven shaft			2	2	2	3	3	3	3	4	4	4	4	5	5
Sliding guides			2	3	3	4	4	5	5	6	6	7	7	8	8

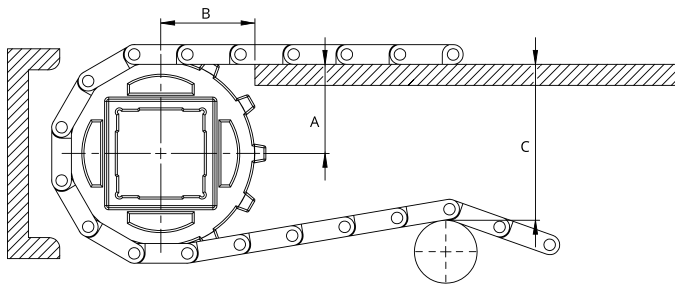
Belt width [mm]			1143	1219,2	1295,4	1371,6	1447,8	1524	1600,2	1676,4	1752,6	1828,8	1905	1981,2	2057,4
Number of sprockes	Drive shaft	Belt tension ≤ 50% of the capacity	9	10	10	11	11	12	12	12	13	14	14	15	15
		Belt tension = 100% of the capacity	16	17	18	19	20	21	22	23	25	26	27	28	29
Driven shaft			5	6	6	7	7	7	8	8	8	9	9	10	10
Sliding guides			9	9	10	10	11	11	12	12	13	13	14	14	15

Mounting

When mounting the sprockets, make sure that you have mounted all sprockets oriented in the same phase.
 Only axially lock the central sprocket and leave the other sprockets free to move axially.



Sprockets for XP254 type

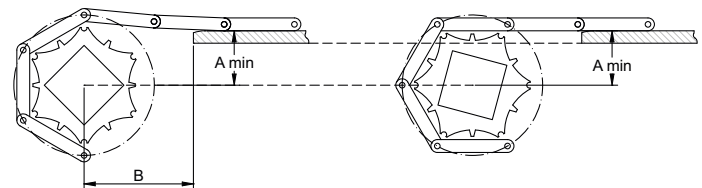
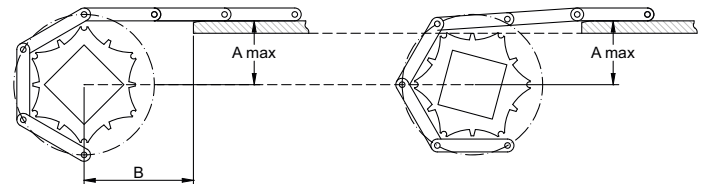


Teeth nr.	A _{max} [mm]	A _{min} [mm]	B1 [mm]	B2 [mm]	C _{max} [mm]
10	35,0	33,2	41	28	77
12	43,0	41,5	45	28	93
15	55,5	54,5	51	28	118
18	68,2	67,5	55	28	143

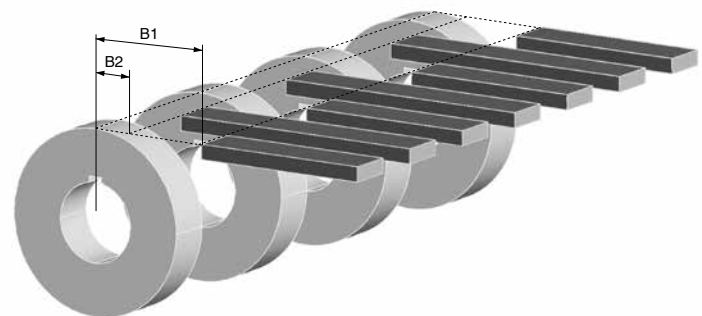
A_{max} = sliding surface position so that the height of the belt engaging the sprocket oscillates between the sliding surface height and a lower one. The height variation depends on the number of teeth and the pitch of the sprocket.

A_{min} = sliding surface position so that the height of the belt engaging the sprocket oscillates between the sliding surface height and a higher one. The height variation depends on the number of teeth and the pitch of the sprocket.

The choice of A dimensions depends on the items you have to carry. it is always suggested to make a chamfer at the end of the sliding guides.



In order to avoid any subsidence of the belt in the area between the guiding strip and the sprockets, it is possible to locate the guides between the sprockets. Two minimum B1 and B2 dimensions are defined.



PITCH 25,4 mm / 1"

Belt type: closed flat top surface
Pin diameter: Ø 5 mm
Open area: 0%
Hole openings: -
Minimum width: 152,4 mm
Thickness: 10 mm
Accessories: flights - side wall
Food Certification: FDA - EU



Standard executions

Belt material	Belt color	Pin
PP	White - blue - gray	PP
PE	White - blue	POM
POM	White - blue	PA

Other materials and colors are available upon request.



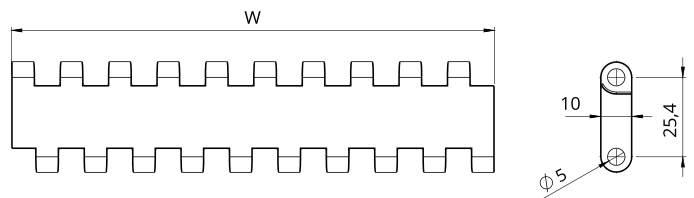
Belt material	Pin material	Belt performance [N/m]	Temperature range [°C]	Certification	Weight [kg/m²]
PP	PP	14620	+5 ÷ +90	FDA - EU	6,9
PE	PE	13000	-73 ÷ +66	FDA - EU	7,1
POM	POM	26250	-43 ÷ +70	FDA - EU	9,9
POM	PA	28350	-40 ÷ +80	FDA - EU	9,7
POM	PP	23100	+5 ÷ +70	FDA - EU	9,7

PP = Polypropylene - PE = Polyethylene - POM = Acetal Resin - PA = Polyamide

Belt width [W]

Minimum [mm]	Standard increment [mm]	Special increment [mm]	Width tolerance* [mm]
152,4	Multiple: 76,2	Multiple: 15,24	+/-2 up to 300
			+/-3 up to 600
			+/-4 more than 600

*It is advisable to consider dimensional variations in width based on operating temperatures and humidity when the belt is made of polyamide.



Part number	NMHP 254 C -PO -W
Type	Belt color: W = white / B = blue / G = gray Belt material: PO = POM - Acetal Resin / PP = Polypropylene PE = Polyethylene / PA = Polyamide
Pitch	
Closed flat top surface	

NMHP254P22

PITCH 25,4 mm / 1"

STRAIGHT MODULAR BELTS

- Belt type:** flat perforated surface
- Pin diameter:** Ø 5 mm
- Open area:** 16%
- Hole openings:** 2,2x7,6 mm
- Minimum width:** 152,4 mm
- Thickness:** 10 mm
- Accessories:** flights - side wall
- Food Certification:** FDA - EU



Standard executions

Belt material	Belt color	Pin
PP	White - blue	PP
POM	White - blue	PA

Other materials and colors are available upon request.

Belt material	Pin material	Belt performance [N/m]	Temperature range [°C]	Certification	Weight [kg/m²]
PP	PP	13650	+5 ÷ +90	FDA - EU	6,6
PE	PE	11880	-73 ÷ +66	FDA - EU	6,9
POM	POM	25120	-43 ÷ +70	FDA - EU	9,2
POM	PA	27100	-40 ÷ +80	FDA - EU	9,0
POM	PP	22100	+5 ÷ +70	FDA - EU	9,0

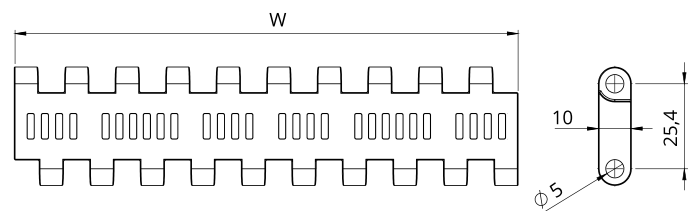
PP = Polypropylene - PE = Polyethylene - POM = Acetal Resin - PA = Polyamide



Belt width [W]

Minimum [mm]	Standard increment [mm]	Special increment [mm]	Width tolerance* [mm]
152,4	Multiple: 76,2	Multiple: 15,24	+/-2 up to 300
			+/-3 up to 600
			+/-4 more than 600

*It is advisable to consider dimensional variations in width based on operating temperatures and humidity when the belt is made of polyamide.



Part number

NMHP 254 P22 -PO -W

Type

Pitch

Flat perforated surface at 22%

Belt color: W = white / B = blue

Belt material:
PO = POM - Acetal Resin / PP = Polypropylene
PE = Polyethylene / PA = Polyamide

PITCH 25,4 mm / 1"

Belt type: closed surface with rubber top insert
Pin diameter: \varnothing 5 mm
Open area: 0%
Insert: rubber 40 Sh
Minimum width: 152,4 mm
Thickness: 10+ 3mm
Accessories: flights - side wall



Standard executions

Belt material	Belt color	Rubber color	Pin
PP	White	White	PP
PE	Gray	Black	POM

Other materials and colors are available upon request.

Belt material	Pin material	Belt performance [N/m]	Temperature range [°C]	Certification	Weight [kg/m ²]
PP	PP	14620	+5 ÷ +50	-	7,1
PE	PE	13000	-10 ÷ +50	-	7,4

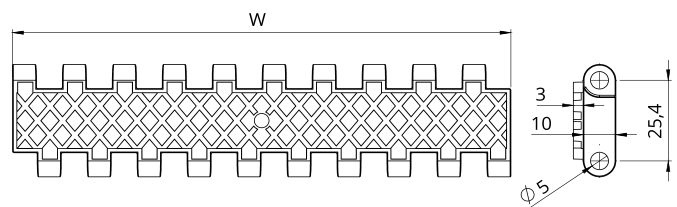
PP = Polypropylene - PE = Polyethylene - POM = Acetal Resin - PA = Polyamide



Belt width [W]

Minimum [mm]	Standard increment [mm]	Special increment [mm]	Width tolerance* [mm]
152,4	Multiple: 76,2	Multiple: 15,24	+/-2 up to 300
			+/-3 up to 600
			+/-4 more than 600

*It is advisable to consider dimensional variations in width based on operating temperatures and humidity when the belt is made of polyamide.



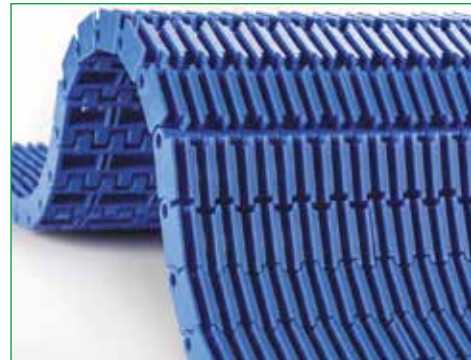
Part number	NMHP 254 GT -PO -W	
Type	Belt color: W = white / G = gray	
Pitch	Belt material: PO = POM - Acetal Resin / PP = Polypropylene PE = Polyethylene	
Closed surface with rubber top insert		

NMHP254RR

PITCH 25,4 mm / 1"

STRAIGHT MODULAR BELTS

- Belt type:** open flat surface rised rib
- Pin diameter:** Ø 5 mm
- Open area:** 16%
- Surface contact with the product:** 40%
- Minimum width:** 152,4 mm
- Thickness:** 15,7 mm
- Accessories:** loading and unloading comb
- Food Certification:** FDA - EU



Standard executions

Belt material	Belt color	Pin
PP	White - blue	PP
POM	White - blue	PA

Other materials and colors are available upon request.

Belt material	Pin material	Belt performance [N/m]	Temperature range [°C]	Certification	Weight [kg/m ²]
PP	PP	14620	+5 ÷ +90	FDA - EU	7,3
PE	PE	13000	-73 ÷ +66	FDA - EU	7,6
POM	POM	25300	-43 ÷ +70	FDA - EU	10,3
POM	PA	27300	-40 ÷ +80	FDA - EU	10,1
POM	PP	22250	+5 ÷ +70	FDA - EU	10,1

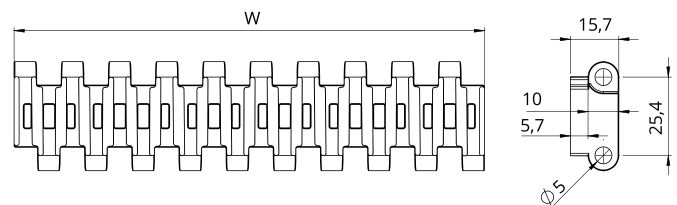
PP = Polypropylene - PE = Polyethylene - POM = Acetal Resin - PA = Polyamide



Belt width [W]

Minimum [mm]	Standard increment [mm]	Special increment [mm]	Width tolerance* [mm]
152,4	Multiple: 76,2	Multiple: 15,24	+/-2 up to 300
			+/-3 up to 600
			+/-4 more than 600

*It is advisable to consider dimensional variations in width based on operating temperatures and humidity when the belt is made of polyamide.



Part number

NMHP 254 RR -PO -W

Type _____

Pitch _____

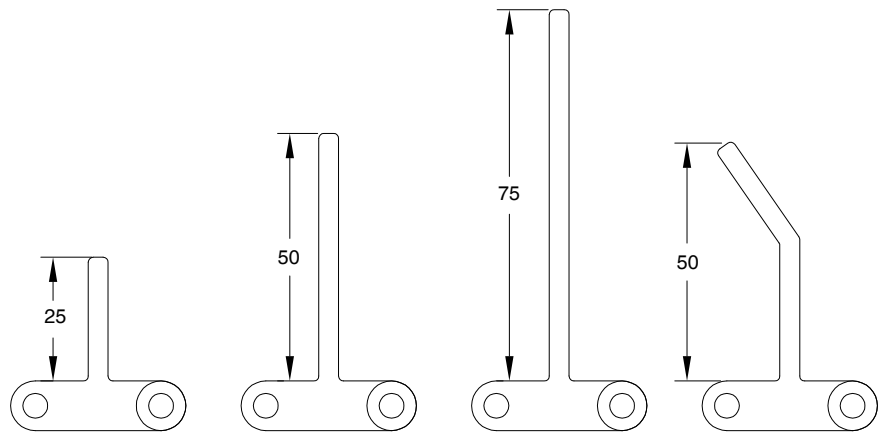
Open flat surface rised rib _____

Belt color: W = white / B = blue

Belt material:
 PO = POM - Acetal Resin / PP = Polypropylene
 PE = Polyethylene / PA = Polyamide

Accessories for NMHP254 type

Flights



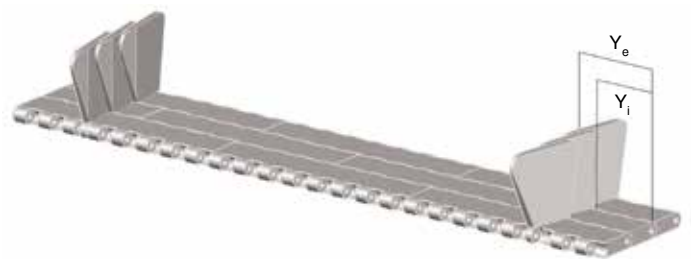
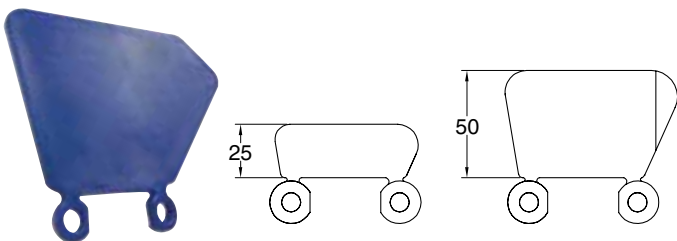
In case of need of flights the following table shows the standard indent. it is possible to have a special indent according to specific customer request.



Standard indent [mm]	Z	30,4	45,6	60,8

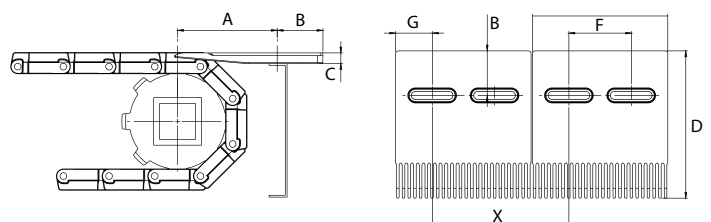
In the case of wide belts, one or more gaps is recommended between flights to allow the belt to be supported on the return path. The maximum width not supported by guides depends on several factors such as the load on the belt, possible incline of the conveyor, and belt or pin material.

Side wall



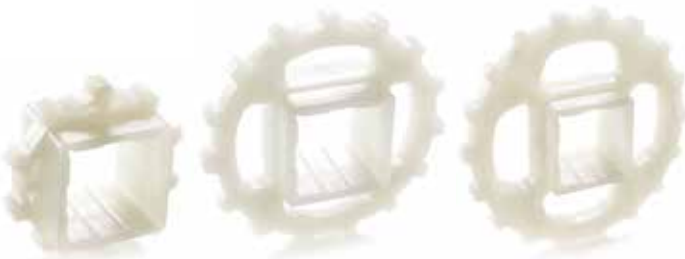
Inner and outer side wall indent [mm]	Y _i	16	23	30	38	46	53
	Y _e	26	33	40	48	56	63

Comb for NMHP254RR type



Quote [mm]	A	B	C	D	E	F	G	X
	105-115	25	12,5	146	150	75	37,5	155

Sprockets for HP254 type



Teeth nr.	Dp [mm]	Do [mm]	A [mm]	B [mm]	Available standard bore	
					Square [mm]	Ø round + set-screw UNI
8	67,4	64,0	40	12	25x25	25 - 30
10	83,5	82,5	40	12	40x40	25 - 30
12	99,7	99,5	40	12	40x40	25 - 30
15	124,1	124,0	40	12	40x40	25 - 30
18	148,6	149,5	40	12	40x40	25 - 30

Standard material: nylon PA6 fiberglass.
It is possible to supply sprocket with any number of teeth or any material by CNC machining

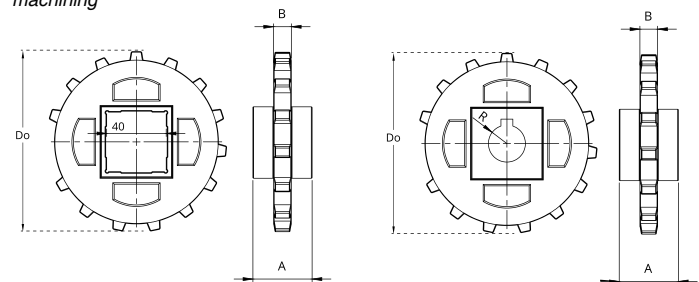
Part number NSHP254 -Q 40 -Z15

Type _____

Bore type: R = round / Q = square _____

Bore dimension (mm) _____

Teeth nr. _____

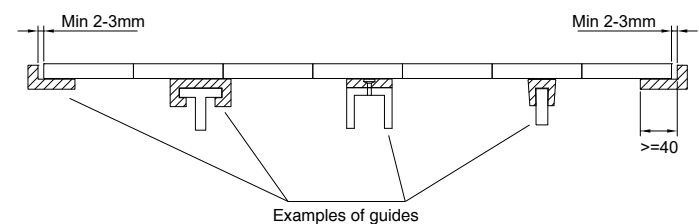


Belt width [mm]		152,4	228,6	304,8	381,0	457,2	533,4	609,6	685,8	762,0	838,2	914,4	990,6	1066,8		
Number of sprockes	Drive shaft	Belt tension ≤ 50% of the capacity		2	2	3	4	5	5	6	6	7	7	8	8	9
		Belt tension = 100% of the capacity		2	3	4	5	6	7	8	9	10	11	13	14	15
Driven shaft		2	2	2	3	3	3	3	4	4	4	4	5	5		
Sliding guides		2	3	3	4	4	5	5	6	6	7	7	8	8		

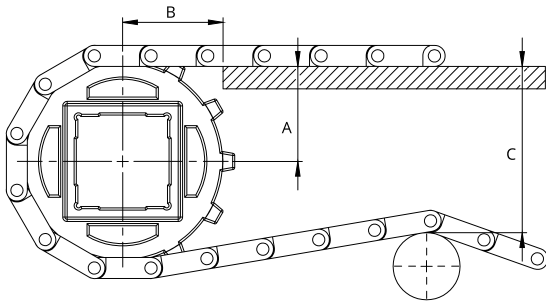
Belt width [mm]		1143	1219,2	1295,4	1371,6	1447,8	1524	1600,2	1676,4	1752,6	1828,8	1905	1981,2	2057,4		
Number of sprockes	Drive shaft	Belt tension ≤ 50% of the capacity		9	10	10	11	11	12	12	12	13	14	14	15	15
		Belt tension = 100% of the capacity		16	17	18	19	20	21	22	23	25	26	27	28	29
Driven shaft		5	6	6	7	7	7	8	8	8	9	9	10	10		
Sliding guides		9	9	10	10	11	11	12	12	13	13	14	14	15		

Mounting

When mounting the sprockets, make sure that you have mounted all sprockets oriented in the same phase.
Only axially lock the central sprocket and leave the other sprockets free to move axially.



Sprockets for HP254 type

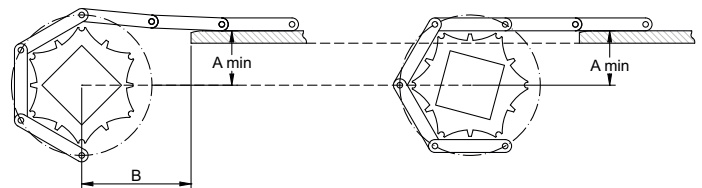
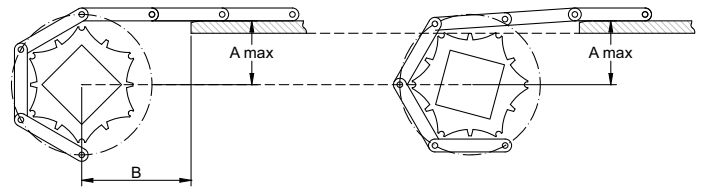


Teeth nr.	A _{max} [mm]	A _{min} [mm]	B1 [mm]	B2 [mm]	C _{max} [mm]
8	28,0	26,0	39	28	58
10	36,8	35,0	41	28	77
12	45,0	43,5	45	28	93
15	57,0	56,0	51	28	118
18	69,0	68,3	55	28	143

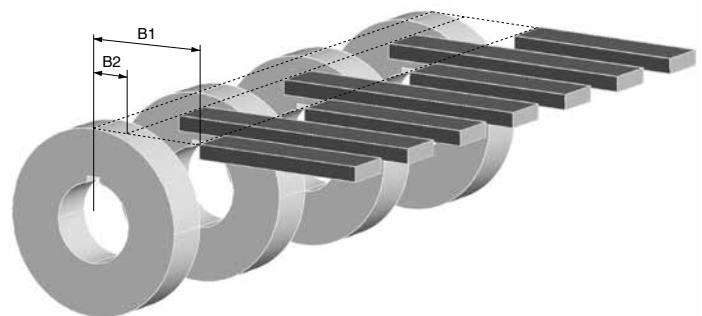
A_{max} = sliding surface position so that the height of the belt engaging the sprocket oscillates between the sliding surface height and a lower one. The height variation depends on the number of teeth and the pitch of the sprocket.

A_{min} = sliding surface position so that the height of the belt engaging the sprocket oscillates between the sliding surface height and a higher one. The height variation depends on the number of teeth and the pitch of the sprocket.

The choice of A dimensions depends on the items you have to carry. it is always suggested to make a chamfer at the end of the sliding guides.



In order to avoid any subsidence of the belt in the area between the guiding strip and the sprockets, it is possible to locate the guides between the sprockets. Two minimum B1 and B2 dimensions are defined.



NMEC381C

PITCH 38,1 mm / 1,5"

STRAIGHT MODULAR BELTS

- Belt type:** closed flat top surface
- Pin diameter:** \varnothing 5,7 mm
- Open area:** 0%
- Hole openings:** -
- Minimum width:** 152,4 mm
- Thickness:** 12,5 mm
- Accessories:** flights - side wall
- Food Certification:** FDA - EU



Standard executions

Belt material	Belt color	Pin
PP	White - blue	PP
PE	White - blue	POM
POM	White - blue	PA

Other materials and colors are available upon request.

Belt material	Pin material	Belt performance [N/m]	Temperature range [°C]	Certification	Weight [kg/m ²]
PP	PP	15900	+5 ÷ +90	FDA - EU	6,35
PE	PE	15200	-73 ÷ +66	FDA - EU	6,60
POM	POM	26950	-43 ÷ +70	FDA - EU	9,60
POM	PA	29100	-40 ÷ +80	FDA - EU	9,30
POM	PP	24200	+5 ÷ +70	FDA - EU	9,30

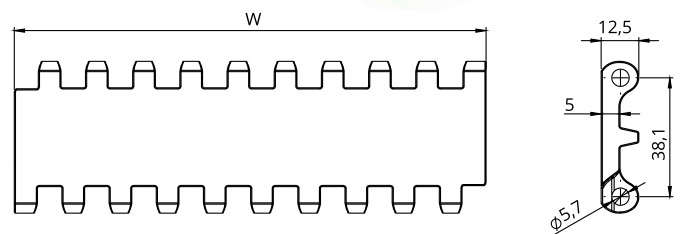
PP = Polypropylene - PE = Polyethylene - POM = Acetal Resin - PA = Polyamide



Belt width [W]

Minimum [mm]	Standard increment [mm]	Special increment [mm]	Width tolerance* [mm]
152,4	Multiple: 76,2	Multiple: 15,24	+/-2 up to 300
			+/-3 up to 600
			+/-4 more than 600

*It is advisable to consider dimensional variations in width based on operating temperatures and humidity when the belt is made of polyamide.



Part number

NMEC 381 C -PO -W

Type _____
 Pitch _____
 Closed flat top surface

Belt color: W = white / B = blue

Belt material:
 PO = POM - Acetal Resin / PP = Polypropylene
 PE = Polyethylene / PA = Polyamide

PITCH 38,1 mm / 1,5"

Belt type: open flat surface
Pin diameter: Ø 5,7 mm
Open area: 22%
Hole openings: 2,5x8 mm
Minimum width: 152,4 mm
Thickness: 12,5 mm
Accessories: flights - side wall
Food Certification: FDA - EU



Standard executions

Belt material	Belt color	Pin
PP	White - blue	PP
PE	White - blue	POM
POM	White - blue	PA

Other materials and colors are available upon request.

Belt material	Pin material	Belt performance [N/m]	Temperature range [°C]	Certification	Weight [kg/m²]
PP	PP	15270	+5 ÷ +90	FDA - EU	5,7
PE	PE	13970	-73 ÷ +66	FDA - EU	5,9
POM	POM	26900	-43 ÷ +70	FDA - EU	8,6
POM	PA	29000	-40 ÷ +80	FDA - EU	8,3
POM	PP	23650	+5 ÷ +70	FDA - EU	8,3

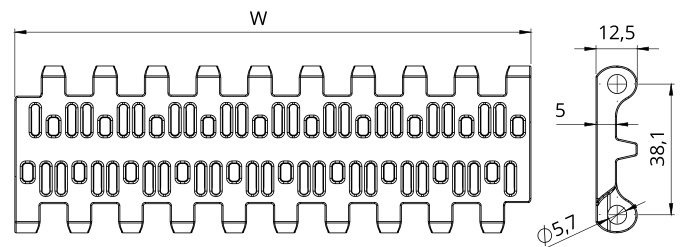
PP = Polypropylene - PE = Polyethylene - POM = Acetal Resin - PA = Polyamide



Belt width [W]

Minimum [mm]	Standard increment [mm]	Special increment [mm]	Width tolerance* [mm]
152,4	Multiple: 76,2	Multiple: 15,24	+/-2 up to 300
			+/-3 up to 600
			+/-4 more than 600

*It is advisable to consider dimensional variations in width based on operating temperatures and humidity when the belt is made of polyamide.



Part number	NMEC 381 P22 -PO -W	
Type		Belt color: W = white / B = blue
Pitch		Belt material: PO = POM - Acetal Resin / PP = Polypropylene PE = Polyethylene / PA = Polyamide
Open flat surface		

NMEC381FG

PITCH 38,1 mm / 1,5"

STRAIGHT MODULAR BELTS

- Belt type:** open flat surface flush grid
- Pin diameter:** Ø 5,7 mm
- Open area:** 30%
- Hole openings:** 6,5x11 mm
- Minimum width:** 152,4 mm
- Thickness:** 12,5 mm
- Accessories:** flights - side wall
- Food Certification:** FDA - EU



Standard executions

Belt material	Belt color	Pin
PP	White - blue	PP
PE	White - blue	POM
POM	White - blue	PA

Other materials and colors are available upon request.



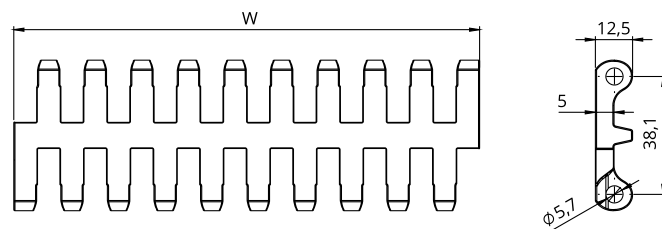
Belt material	Pin material	Belt performance [N/m]	Temperature range [°C]	Certification	Weight [kg/m²]
PP	PP	14900	+5 ÷ +90	FDA - EU	5,3
PE	PE	14300	-73 ÷ +66	FDA - EU	5,4
POM	POM	24800	-43 ÷ +70	FDA - EU	8,0
POM	PA	26850	-40 ÷ +80	FDA - EU	7,7
POM	PP	21850	+5 ÷ +70	FDA - EU	7,7

PP = Polypropylene - PE = Polyethylene - POM = Acetal Resin - PA = Polyamide

Belt width [W]

Minimum [mm]	Standard increment [mm]	Special increment [mm]	Width tolerance* [mm]
152,4	Multiple: 76,2	Multiple: 15,24	+/-2 up to 300
			+/-3 up to 600
			+/-4 more than 600

*It is advisable to consider dimensional variations in width based on operating temperatures and humidity when the belt is made of polyamide.



Part number

NMEC 381 FG -PO -W

Type _____
 Pitch _____
 Open flat surface flush grid

Belt color: W = white / B = blue
 Belt material:
 PO = POM - Acetal Resin / PP = Polypropylene
 PE = Polyethylene / PA = Polyamide

PITCH 38,1 mm / 1,5"

Belt type: closed surface nub top pattern

Pin diameter: Ø 5,7 mm

Open area: 0%

Hole openings: -

Minimum width: 152,4 mm

Thickness: 14,5 mm

Accessories: flights - side wall

Food Certification: FDA - EU



Standard executions

Belt material	Belt color	Pin
PP	White - blue	PP
PE	White - blue	POM
POM	White - blue	PA

Other materials and colors are available upon request.



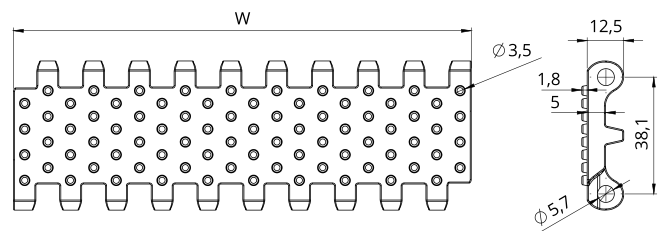
Belt material	Pin material	Belt performance [N/m]	Temperature range [°C]	Certification	Weight [kg/m²]
PP	PP	15900	+5 ÷ +90	FDA - EU	6,50
PE	PE	15200	-73 ÷ +66	FDA - EU	6,85
POM	POM	26950	-43 ÷ +70	FDA - EU	9,90
POM	PA	29100	-40 ÷ +80	FDA - EU	9,60
POM	PP	24200	+5 ÷ +70	FDA - EU	9,60

PP = Polypropylene - PE = Polyethylene - POM = Acetal Resin - PA = Polyamide

Belt width [W]

Minimum [mm]	Standard increment [mm]	Special increment [mm]	Width tolerance* [mm]
152,4	Multiple: 76,2	Multiple: 15,24	+/-2 up to 300
			+/-3 up to 600
			+/-4 more than 600

*It is advisable to consider dimensional variations in width based on operating temperatures and humidity when the belt is made of polyamide.



Part number

NMEC 381 NT -PO -W

Type

Pitch

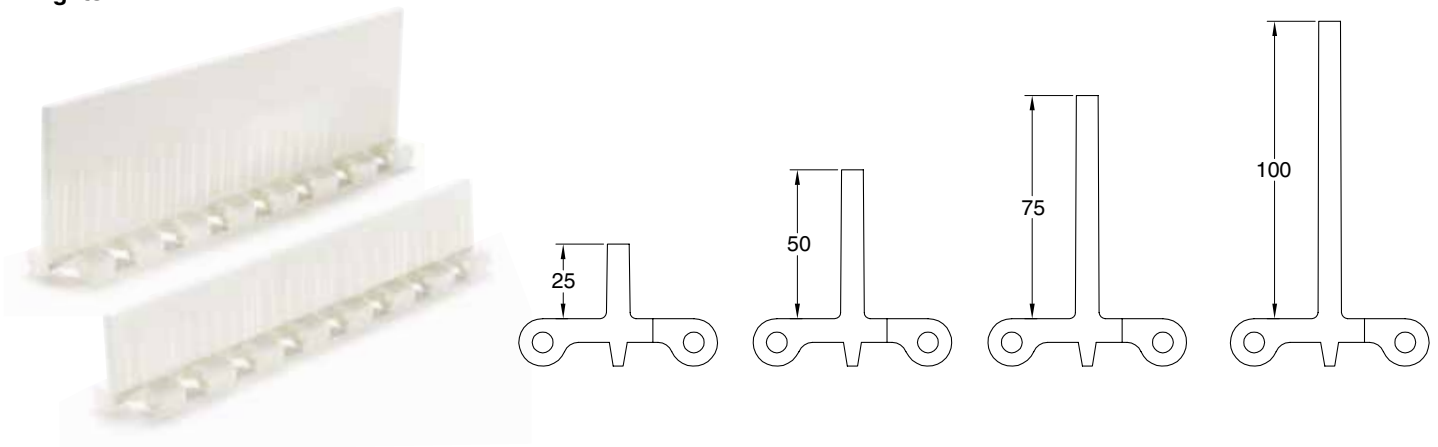
Closed surface nub top pattern

Belt color: W = white / B = blue

Belt material:
PO = POM - Acetal Resin / PP = Polypropylene
PE = Polyethylene / PA = Polyamide

Accessories for EC381 type

Flights



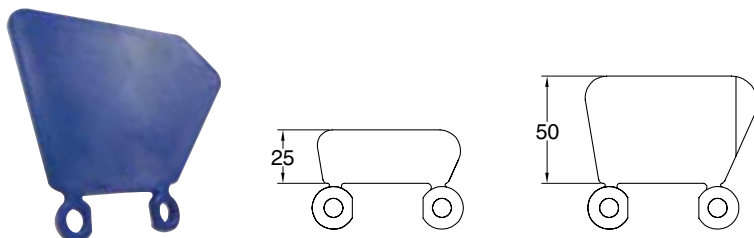
In case of need of flights the following table shows the standard indent. it is possible to have a special indent according to specific customer request.



Standard indent [mm]	Z	15,2	30,4	45,6	60,8
	Z	15,2	30,4	45,6	60,8

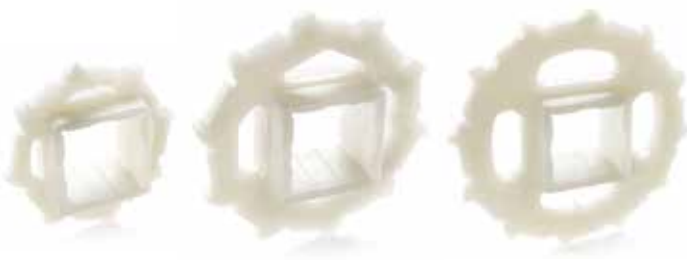
In the case of wide belts, one or more gaps is recommended between flights to allow the belt to be supported on the return path. The maximum width not supported by guides depends on several factors such as the load on the belt, possible incline of the conveyor, and belt or pin material.

Side wall



Inner and outer side wall indent [mm]	Y _i	16	23	30	38	46	53
	Y _e	26	33	40	48	56	63

Sprockets for EC381 type



Teeth nr.	Dp [mm]	Do [mm]	A [mm]	B [mm]	Available standard bore	
					Square [mm]	Ø round + set-screw UNI
8	99,6	97,6	40	10	40x40	20 - 25 - 30
10	123,3	122,0	40	10	40x40	20 - 25 - 30
12	147,2	146,4	40	10	40x40	20 - 25 - 30

Materiale standard: nylon PA6 caricato fibra di vetro.
 È possibile realizzare da macchina utensile pignoni con numero di denti e materiali diversi.

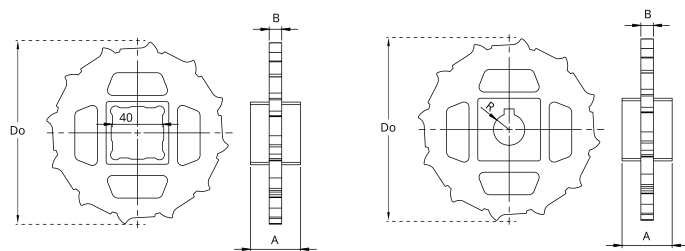
Part number NSEC381 -Q 40 -Z10

Type _____

Bore type: R = round / Q = square _____

Bore dimension (mm) _____

Teeth nr. _____

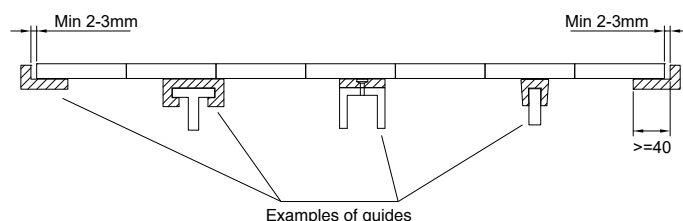


Belt width [mm]		152,4	228,6	304,8	381,0	457,2	533,4	609,6	685,8	762,0	838,2	914,4	990,6	1066,8	
Number of sprockes	Drive shaft	Belt tension ≤ 50% of the capacity	2	2	3	4	5	5	6	6	7	7	8	8	9
		Belt tension = 100% of the capacity	2	2	3	4	5	6	7	8	9	10	11	12	13
Driven shaft			2	2	2	3	3	3	3	4	4	4	4	5	5
Sliding guides			2	3	3	3	4	4	5	5	5	6	6	6	7

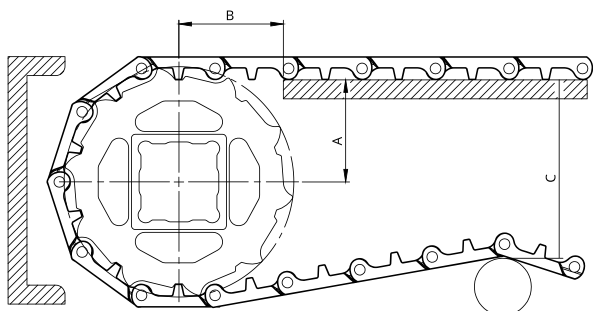
Belt width [mm]		1143,0	1219,2	1295,4	1371,6	1447,8	1524,0	1600,2	1676,4	1752,6	1828,8	1905,0	1981,2	2057,4	
Number of sprockes	Drive shaft	Belt tension ≤ 50% of the capacity	9	10	10	11	11	12	12	12	13	14	14	15	15
		Belt tension = 100% of the capacity	14	15	16	17	18	19	20	20	21	22	23	24	25
Driven shaft			5	6	6	7	7	7	8	8	8	9	9	10	10
Sliding guides			7	8	8	8	9	9	10	10	10	11	11	11	12

Mounting

When mounting the sprockets, make sure that you have mounted all sprockets oriented in the same phase.
 Only axially lock the central sprocket and leave the other sprockets free to move axially.



Sprockets for EC381 type

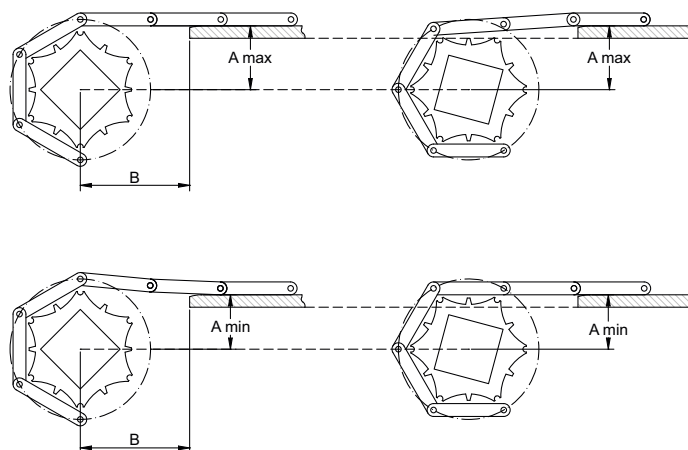


Teeth nr.	A _{max} [mm]	A _{min} [mm]	B1 [mm]	B2 [mm]	C _{max} [mm]
8	44,0	41,0	49	42	91
10	55,5	54,0	55	42	116
12	67,5	66,5	59	42	140

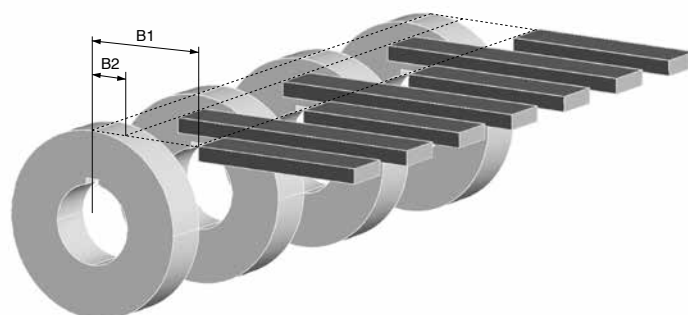
A_{max} = sliding surface position so that the height of the belt engaging the sprocket oscillates between the sliding surface height and a lower one. The height variation depends on the number of teeth and the pitch of the sprocket.

A_{min} = sliding surface position so that the height of the belt engaging the sprocket oscillates between the sliding surface height and a higher one. The height variation depends on the number of teeth and the pitch of the sprocket.

The choice of A dimensions depends on the items you have to carry. it is always suggested to make a chamfer at the end of the sliding guides.



In order to avoid any subsidence of the belt in the area between the guiding strip and the sprockets, it is possible to locate the guides between the sprockets. Two minimum B1 and B2 dimensions are defined.



STRAIGHT MODULAR BELTS

PITCH 50,8 mm / 2"

Belt type: closed flat top surface
Pin diameter: Ø 7 mm
Open area: 0%
Hole openings: -
Minimum width: 200 mm
Thickness: 16 mm
Accessories: flights - side wall
Food Certification: FDA - EU



Standard executions

Belt material	Belt color	Pin
PP	White - blue	PP
PE	White - blue	POM

Other materials and colors are available upon request.

Belt material	Pin material	Belt performance [N/m]	Temperature range [°C]	Certification	Weight [kg/m ²]
PP	PP	17500	+5 ÷ +90	FDA - EU	8,0
PE	PE	16750	-73 ÷ +66	FDA - EU	8,2
POM	POM	29500	-43 ÷ +70	FDA - EU	12,1
POM	PA	31500	-40 ÷ +80	FDA - EU	11,7
POM	PP	25650	+5 ÷ +70	FDA - EU	11,7

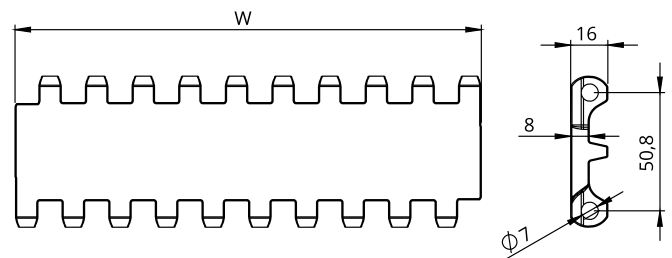
PP = Polypropylene - PE = Polyethylene - POM = Acetal Resin - PA = Polyamide



Belt width [W]

Minimum [mm]	Standard increment [mm]	Special increment [mm]	Width tolerance* [mm]
200	Multiple: 100	20	+/-2 up to 300
			+/-3 up to 600
			+/-4 more than 600

*It is advisable to consider dimensional variations in width based on operating temperatures and humidity when the belt is made of polyamide.



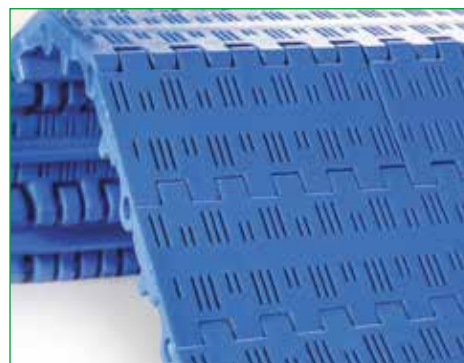
Part number	NMEC 508 C -PO -W	
Type	Belt color: W = white / B = blue	
Pitch	Belt material: PO = POM - Acetal Resin / PP = Polypropylene PE = Polyethylene / PA = Polyamide	
Closed flat top surface		

NMEC508P11

PITCH 50,8 mm / 2"

STRAIGHT MODULAR BELTS

- Belt type:** open flat surface
- Pin diameter:** Ø 7 mm
- Open area:** 11%
- Hole openings:** 1,2x12 mm
- Minimum width:** 200 mm
- Thickness:** 16 mm
- Accessories:** flights - side wall
- Food Certification:** FDA - EU



Standard executions

Belt material	Belt color	Pin
PP	White - blue	PP
POM	White - blue	PA

Other materials and colors are available upon request.

Belt material	Pin material	Belt performance [N/m]	Temperature range [°C]	Certification	Weight [kg/m²]
PP	PP	16060	+5 ÷ +90	FDA - EU	6,9
PE	PE	15000	-73 ÷ +66	FDA - EU	7,2
POM	PA	30200	-40 ÷ +80	FDA - EU	10,2
POM	PP	24600	+5 ÷ +70	FDA - EU	10,2

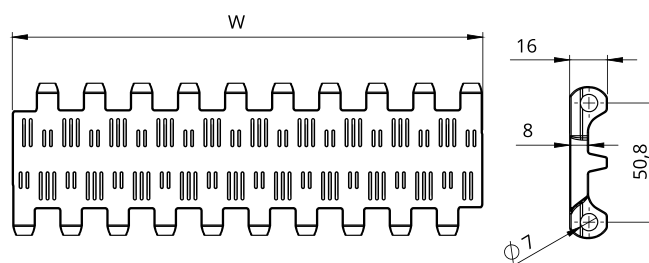
PP = Polypropylene - PE = Polyethylene - POM = Acetal Resin - PA = Polyamide



Belt width [W]

Minimum [mm]	Standard increment [mm]	Special increment [mm]	Width tolerance* [mm]
200	Multiple: 100	20	+/-2 up to 300
			+/-3 up to 600
			+/-4 more than 600

*It is advisable to consider dimensional variations in width based on operating temperatures and humidity when the belt is made of polyamide.



Part number

NMEC 508 P11 -PO -W

Type

Pitch

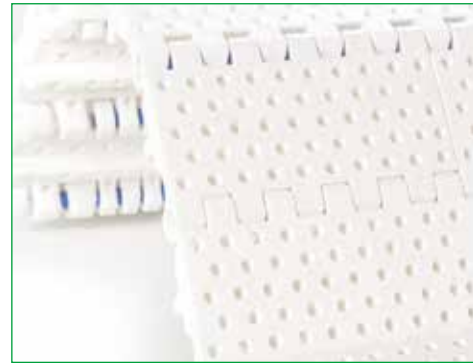
Open flat surface at 11%

Belt color: W = white / B = blue

Belt material:
PO = POM - Acetal Resin / PP = Polypropylene
PE = Polyethylene / PA = Polyamide

PITCH 50,8 mm / 2"

Belt type: flat perforated surface
Pin diameter: Ø 7 mm
Open area: 13%
Hole openings: Ø 4 mm
Minimum width: 200 mm
Thickness: 16 mm
Accessories: flights - side wall
Food Certification: FDA - EU



Standard executions

Belt material	Belt color	Pin
PP	White - blue	PP

Other materials and colors are available upon request.

Belt material	Pin material	Belt performance [N/m]	Temperature range [°C]	Certification	Weight [kg/m ²]
PP	PP	16060	+5 ÷ +90	FDA - EU	6,9
PE	PE	15000	-73 ÷ +66	FDA - EU	7,2
POM	POM	28400	-43 ÷ +70	FDA - EU	10,5
POM	PA	30200	-40 ÷ +80	FDA - EU	10,2
POM	PP	24600	+5 ÷ +70	FDA - EU	10,2

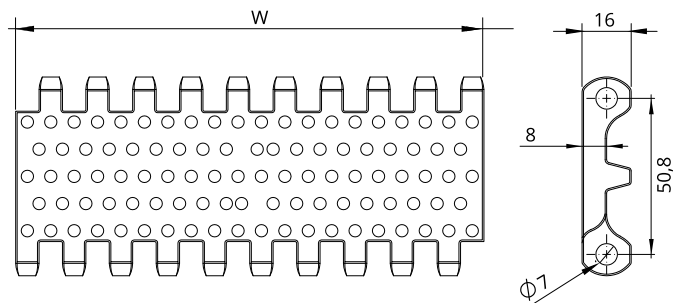
PP = Polypropylene - PE = Polyethylene - POM = Acetal Resin - PA = Polyamide



Belt width [W]

Minimum [mm]	Standard increment [mm]	Special increment [mm]	Width tolerance* [mm]
200	Multiple: 100	20	+/-2 up to 300
			+/-3 up to 600
			+/-4 more than 600

*It is advisable to consider dimensional variations in width based on operating temperatures and humidity when the belt is made of polyamide.



Part number

NMEC 508 P13 -PO -W

Type

Pitch

Flat perforated surface at 13%

Belt color: W = white / B = blue

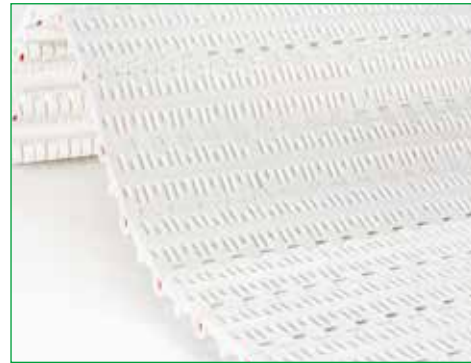
Belt material:
 PO = POM - Acetal Resin / PP = Polypropylene
 PE = Polyethylene / PA = Polyamide

NMEC508P22

PITCH 50,8 mm / 2"

STRAIGHT MODULAR BELTS

- Belt type:** open flat surface
- Pin diameter:** Ø 7 mm
- Open area:** 22%
- Hole openings max.:** 3x12 mm
- Minimum width:** 200 mm
- Thickness:** 16 mm
- Accessories:** flights - side wall
- Food Certification:** FDA - EU



Standard executions

Belt material	Belt color	Pin
PP	White - blue	PP
PE	White - blue	POM
PPH	Blue	PPH

Other materials and colors are available upon request.

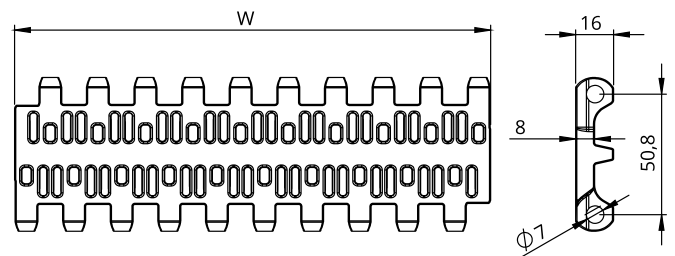
Belt material	Pin material	Belt performance [N/m]	Temperature range [°C]	Certification	Weight [kg/m ²]
PP	PP	16060	+5 ÷ +90	FDA - EU	6,9
PE	PE	15000	-73 ÷ +66	FDA - EU	7,2
POM	POM	28300	-43 ÷ +70	FDA - EU	10,5
POM	PA	30200	-40 ÷ +80	FDA - EU	10,2
POM	PP	24600	+5 ÷ +70	FDA - EU	10,2
PH	PH	16200	+20 ÷ +105	FDA - EU	6,9

PP = Polypropylene - PE = Polyethylene - POM = Acetal Resin - PA = Polyamide
 PPH = Polypropylene per alte temperature ambiente umido

Belt width [W]

Minimum [mm]	Standard increment [mm]	Special increment [mm]	Width tolerance* [mm]
200	Multiple: 100	20	+/-2 up to 300
			+/-3 up to 600
			+/-4 more than 600

*It is advisable to consider dimensional variations in width based on operating temperatures and humidity when the belt is made of polyamide.



Part number

NMEC 508 P22 -PO -W

Type

PITCH

Open flat surface at 22%

Belt color: W = white / B = blue

Belt material:
 PO = POM - Acetal Resin / PP = Polypropylene
 PE = Polyethylene / PA = Polyamide / PH = Polypropylene high temperature

PITCH 50,8 mm / 2"

Belt type: open flat surface flush grid
Pin diameter: Ø 7 mm
Open area: 35%
Hole openings: 9x12 mm
Minimum width: 200 mm
Thickness: 16 mm
Accessories: flights - side wall
Food Certification: FDA - EU



Standard executions

Belt material	Belt color	Pin
PP	White - blue	PP
PE	White - blue	POM
POM	White - blue	PA

Other materials and colors are available upon request.



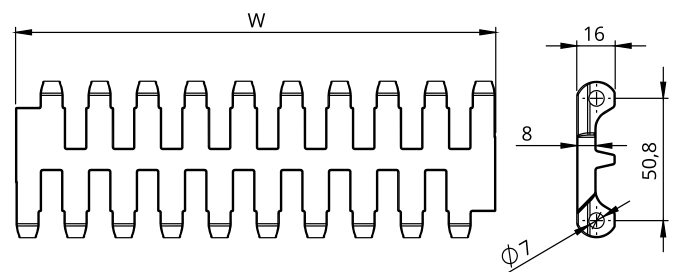
Belt material	Pin material	Belt performance [N/m]	Temperature range [°C]	Certification	Weight [kg/m²]
PP	PP	15050	+5 ÷ +90	FDA - EU	6,0
PE	PE	12100	-73 ÷ +66	FDA - EU	7,0
POM	POM	24900	-43 ÷ +70	FDA - EU	10,3
POM	PA	26600	-40 ÷ +80	FDA - EU	10,2
POM	PP	21600	+5 ÷ +70	FDA - EU	10,2

PP = Polypropylene - PE = Polyethylene - POM = Acetal Resin - PA = Polyamide

Belt width [W]

Minimum [mm]	Standard increment [mm]	Special increment [mm]	Width tolerance* [mm]
200	Multiple: 100	20	+/-2 up to 300
			+/-3 up to 600
			+/-4 more than 600

*It is advisable to consider dimensional variations in width based on operating temperatures and humidity when the belt is made of polyamide.



Part number

NMEC 508 FG -PO -W

Type
 Pitch
 Open flat surface flush grid

Belt color: W = white / B = blue

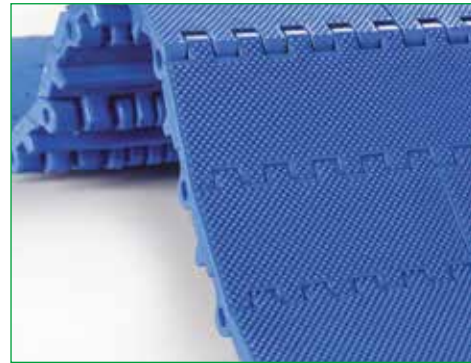
Belt material:
 PO = POM - Acetal Resin / PP = Polypropylene
 PE = Polyethylene / PA = Polyamide

NMEC508DT

PITCH 50,8 mm / 2"

STRAIGHT MODULAR BELTS

- Belt type:** closed surface with pyramid pattern
- Pin diameter:** Ø 7 mm
- Open area:** 0%
- Hole openings:** -
- Minimum width:** 200 mm
- Thickness:** 16+1 mm
- Accessories:** flights - side wall
- Food Certification:** FDA - EU



Standard executions

Belt material	Belt color	Pin
PP	White - blue	PP
PE	White - blue	POM
POM	White - blue	PA

Other materials and colors are available upon request.

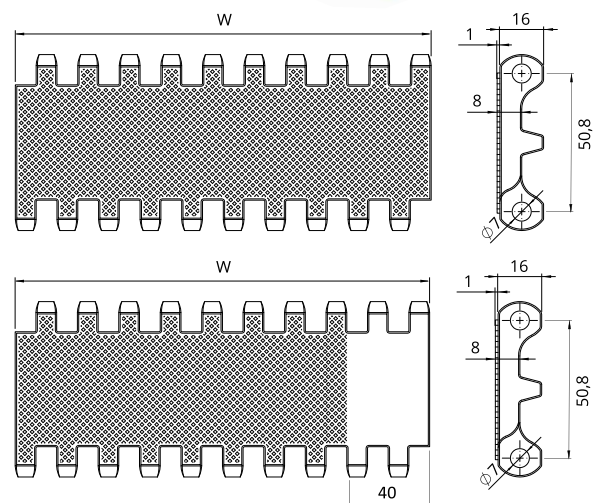
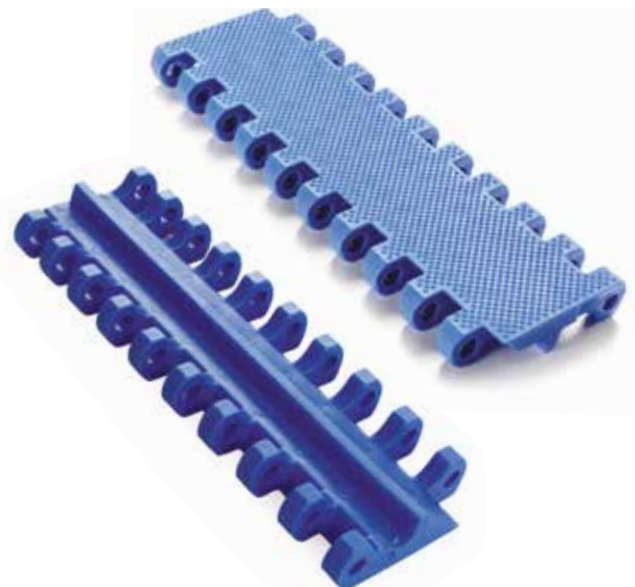
Belt material	Pin material	Belt performance [N/m]	Temperature range [°C]	Certification	Weight [kg/m ²]
PP	PP	17500	+5 ÷ +90	FDA - EU	8,0
PE	PE	16750	-73 ÷ +66	FDA - EU	8,2
POM	POM	29500	-43 ÷ +70	FDA - EU	12,2
POM	PA	31500	-40 ÷ +80	FDA - EU	11,9
POM	PP	25650	+5 ÷ +70	FDA - EU	11,9

PP = Polypropylene - PE = Polyethylene - POM = Acetal Resin - PA = Polyamide

Belt width [W]

Minimum [mm]	Standard increment [mm]	Special increment [mm]	Width tolerance* [mm]
200	Multiple: 100	20	+/-2 up to 300
			+/-3 up to 600
			+/-4 more than 600

*It is advisable to consider dimensional variations in width based on operating temperatures and humidity when the belt is made of polyamide.



Part number

NMEC 508 DT -PO -W

Type _____

Pitch _____

Closed surface with pyramid pattern _____

Belt color: W = white / B = blue

Belt material:
 PO = POM - Acetal Resin / PP = Polypropylene
 PE = Polyethylene / PA = Polyamide

PITCH 50,8 mm / 2"

- Belt type:** closed surface with pyramid pattern - indent 40 mm
- Pin diameter:** Ø 7 mm
- Open area:** 0%
- Hole openings:** -
- Minimum width:** 200 mm
- Thickness:** 16+2,5 mm
- Accessories:** flights - side wall
- Food Certification:** FDA - EU



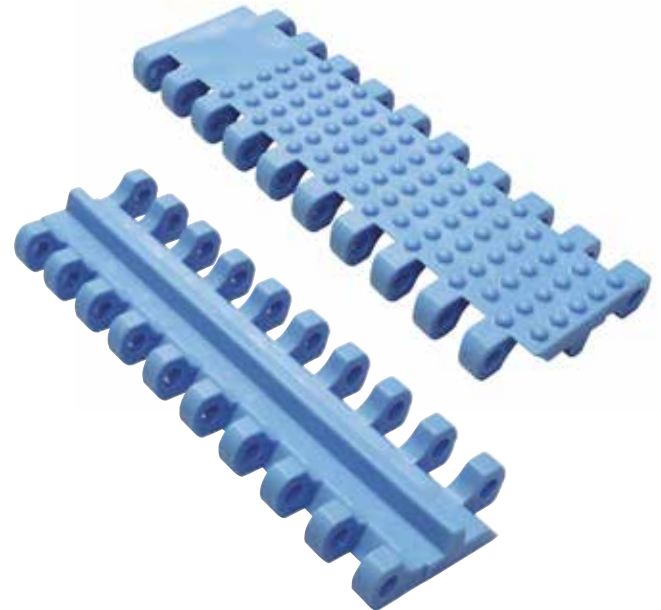
Standard executions

Belt material	Belt color	Pin
PP	White - blue	PP
PE	White - blue	POM

Other materials and colors are available upon request.

Belt material	Pin material	Belt performance [N/m]	Temperature range [°C]	Certification	Weight [kg/m ²]
PP	PP	17500	+5 ÷ +90	FDA - EU	8,2
PE	PE	16750	-73 ÷ +66	FDA - EU	8,4
POM	POM	29500	-43 ÷ +70	FDA - EU	12,3
POM	PA	31500	-40 ÷ +80	FDA - EU	11,9
POM	PP	26550	+5 ÷ +70	FDA - EU	11,9

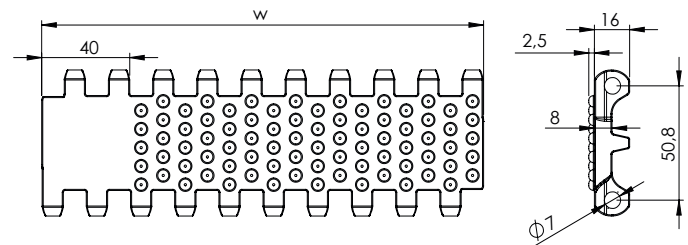
PP = Polypropylene - PE = Polyethylene - POM = Acetal Resin - PA = Polyamide



Belt width [W]

Minimum [mm]	Standard increment [mm]	Special increment [mm]	Width tolerance* [mm]
200	Multiple: 100	Multiple: 20	+/-2 up to 300
			+/-3 up to 600
			+/-4 more than 600

*It is advisable to consider dimensional variations in width based on operating temperatures and humidity when the belt is made of polyamide.



Part number	NMEC 508 NT -PO -W	
Type		Belt color: W = white / B = blue
Pitch		Belt material: PO = POM - Acetal Resin / PP = Polypropylene PE = Polyethylene / PA = Polyamide
Closed surface with pyramid pattern - indent 40 mm		

NMEC508FT

PITCH 50,8 mm / 2"

STRAIGHT MODULAR BELTS

Belt type: open surface with sferical - indetn 40 mm

Pin diameter: Ø 7 mm

Open area: 35%

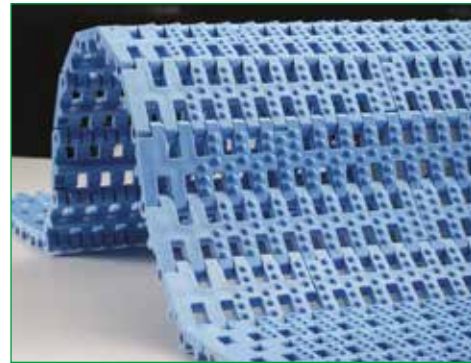
Hole openings: 9x12 mm

Minimum width: 200 mm

Thickness: 16+2,5 mm

Accessories: flights - side wall

Food Certification: FDA - EU



Standard executions

Belt material	Belt color	Pin
PP	White - blue	PP
PE	White - blue	POM

Other materials and colors are available upon request.

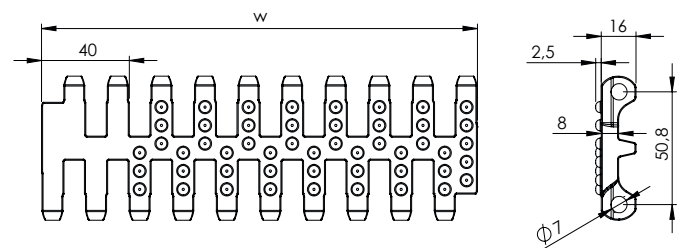
Belt material	Pin material	Belt performance [N/m]	Temperature range [°C]	Certification	Weight [kg/m ²]
PP	PP	15050	+5 ÷ +90	FDA - EU	6,2
PE	PE	12100	-73 ÷ +66	FDA - EU	7,2
POM	POM	24900	-43 ÷ +70	FDA - EU	10,5
POM	PA	26600	-40 ÷ +80	FDA - EU	10,4
POM	PP	21600	+5 ÷ +70	FDA - EU	10,4

PP = Polypropylene - PE = Polyethylene - POM = Acetal Resin - PA = Polyamide

Belt width [W]

Minimum [mm]	Standard increment [mm]	Special increment [mm]	Width tolerance* [mm]
200	Multiple: 50	Multiple: 16,7	+/-2 up to 300
			+/-3 up to 600
			+/-4 more than 600

*It is advisable to consider dimensional variations in width based on operating temperatures and humidity when the belt is made of polyamide.



Part number

NMEC 508 FT -PO -W

Type

Pitch

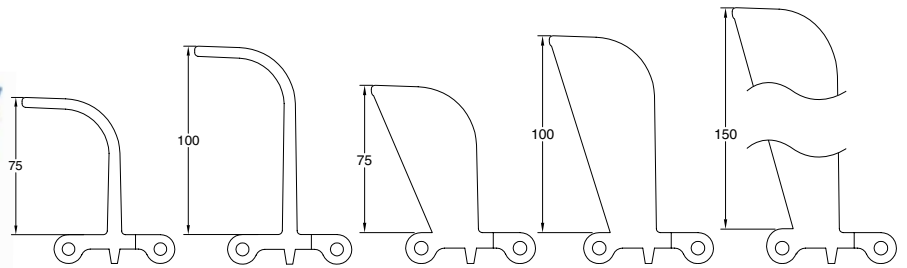
Open surface with sferical - indetn 40 mm

Belt color: W = white / B = blue

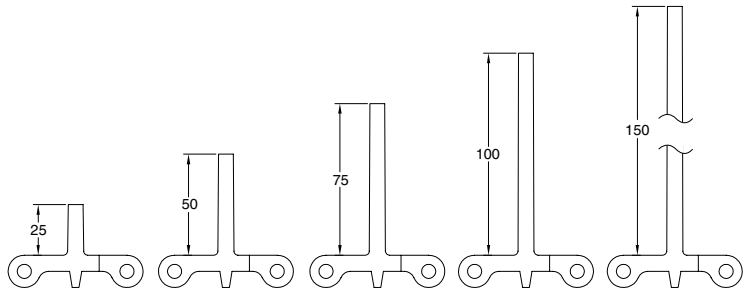
Belt material:
PO = POM - Acetal Resin / PP = Polypropylene
PE = Polyethylene / PA = Polyamide

Accessories for EC508 type

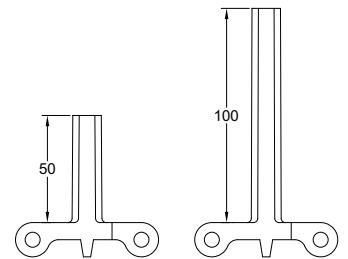
Flights



Heavy load design



No cling execution



In case of need of flights the following table shows the standard indent. it is possible to have a special indent according to specific customer request.

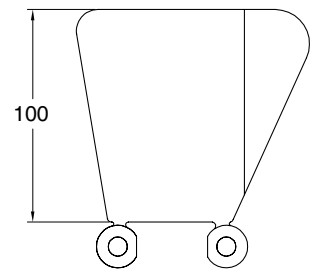
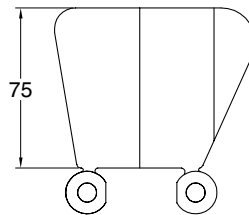
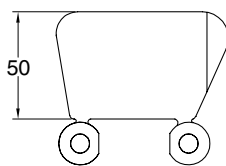
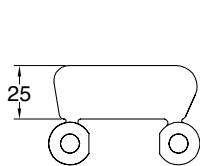


Standard indent [mm]	Z	40	60	80	100

In the case of wide belts, one or more gaps is recommended between flights to allow the belt to be supported on the return path.

The maximum width not supported by guides depends on several factors such as the load on the belt, possible incline of the conveyor, and belt or pin material.

Side wall



Inner and outer side wall indent [mm]	Y_i	20	30	40	50	60	70
	Y_e	32	42	52	62	72	82

Sprockets for EC508 type



Teeth nr.	Dp [mm]	Do [mm]	A [mm]	B [mm]	Available standard bore	
					Square [mm]	Ø round + set-screw UNI
6	101,6	88,5	40	31	40x40	20 - 25 - 30
8	132,7	122,4	40	31	40x40	20 - 25 - 30
10	164,4	156,5	40	31	40x40	20 - 25 - 30
12	196,3	189,7	40	31	40x40	20 - 25 - 30

Materiale standard: nylon PA6 caricato fibra di vetro.
 È possibile realizzare da macchina utensile pignoni con numero di denti e materiali diversi.

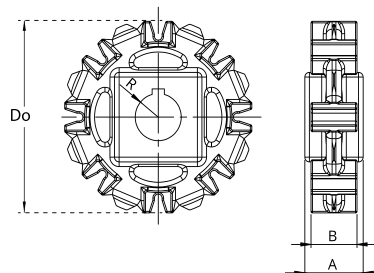
Part number NSEC508 -R 30 -Z8

Type _____

Bore type: R = round / Q = square _____

Bore dimension (mm) _____

Teeth nr. _____

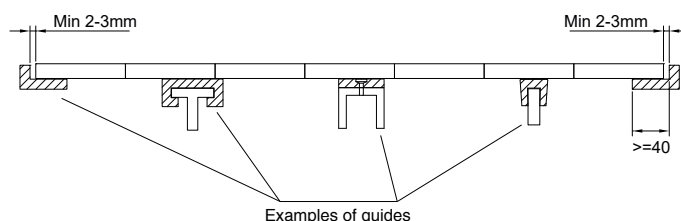


Belt width [mm]		200	300	400	500	600	700	800	900	1000	1100	1200	1400	1600																													
Number of sprockes	Drive shaft	<table border="1"> <tr> <td>Belt tension ≤ 50% of the capacity</td> <td>2</td><td>2</td><td>3</td><td>3</td><td>4</td><td>5</td><td>5</td><td>6</td><td>6</td><td>7</td><td>8</td><td>9</td><td>10</td> </tr> <tr> <td>Belt tension = 100% of the capacity</td> <td>2</td><td>3</td><td>5</td><td>6</td><td>7</td><td>8</td><td>10</td><td>11</td><td>12</td><td>13</td><td>15</td><td>17</td><td>20</td> </tr> </table>														Belt tension ≤ 50% of the capacity	2	2	3	3	4	5	5	6	6	7	8	9	10	Belt tension = 100% of the capacity	2	3	5	6	7	8	10	11	12	13	15	17	20
	Belt tension ≤ 50% of the capacity	2	2	3	3	4	5	5	6	6	7	8	9	10																													
Belt tension = 100% of the capacity	2	3	5	6	7	8	10	11	12	13	15	17	20																														
Driven shaft		2	2	3	3	3	4	4	5	5	5	6	7	7																													
Sliding guides		2	3	3	3	4	4	5	5	5	6	6	7	8																													

Belt width [mm]		1800	2000	2200	2400	2600	2800	3000																	
Number of sprockes	Drive shaft	<table border="1"> <tr> <td>Belt tension ≤ 50% of the capacity</td> <td>11</td><td>12</td><td>13</td><td>15</td><td>16</td><td>17</td><td>18</td> </tr> <tr> <td>Belt tension = 100% of the capacity</td> <td>22</td><td>25</td><td>27</td><td>30</td><td>32</td><td>35</td><td>37</td> </tr> </table>								Belt tension ≤ 50% of the capacity	11	12	13	15	16	17	18	Belt tension = 100% of the capacity	22	25	27	30	32	35	37
	Belt tension ≤ 50% of the capacity	11	12	13	15	16	17	18																	
Belt tension = 100% of the capacity	22	25	27	30	32	35	37																		
Driven shaft		8	8	9	10	11	12	13																	
Sliding guides		9	9	10	11	12	13	13																	

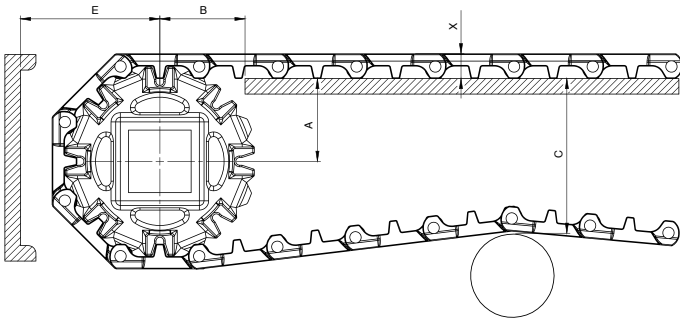
Mounting

When mounting the sprockets, make sure that you have mounted all sprockets oriented in the same phase.
 Only axially lock the central sprocket and leave the other sprockets free to move axially.



STRAIGHT MODULAR BELTS

Sprockets for EC508 type

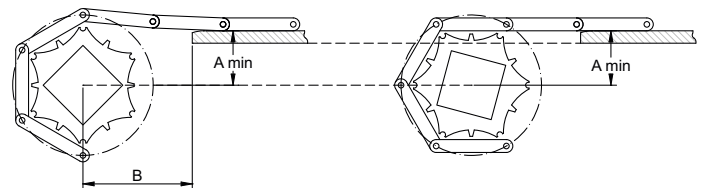
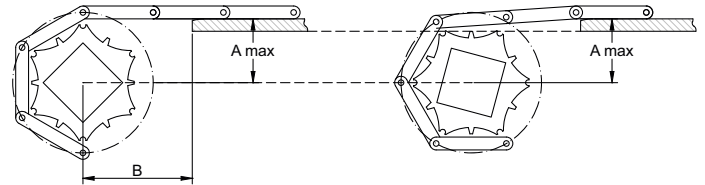


Teeth nr.	A _{max} [mm]	A _{min} [mm]	B1 [mm]	B2 [mm]	C _{max} [mm]
6	42,0	38,0	54	56	89
8	58,0	56,0	62	56	122
10	74,0	72,5	66	56	155
12	90,5	89,0	73	56	187

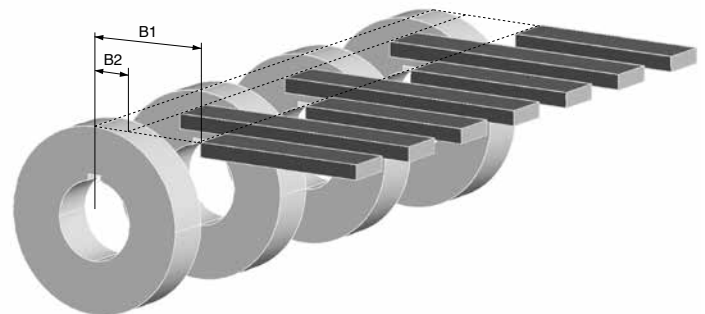
A_{max} = sliding surface position so that the height of the belt engaging the sprocket oscillates between the sliding surface height and a lower one. The height variation depends on the number of teeth and the pitch of the sprocket.

A_{min} = sliding surface position so that the height of the belt engaging the sprocket oscillates between the sliding surface height and a higher one. The height variation depends on the number of teeth and the pitch of the sprocket.

The choice of A dimensions depends on the items you have to carry. it is always suggested to make a chamfer at the end of the sliding guides.



In order to avoid any subsidence of the belt in the area between the guiding strip and the sprockets, it is possible to locate the guides between the sprockets. Two minimum B1 and B2 dimensions are defined.



NMMD508C

STRAIGHT MODULAR BELTS

PITCH 50,8 mm / 2"

- Belt type:** closed flat top surface
- Pin diameter:** Ø 7 mm
- Open area:** 0%
- Hole openings:** -
- Minimum width:** 150 mm
- Thickness:** 16 mm
- Accessories:** flights - side wall
- Food Certification:** FDA - EU



Standard executions

Belt material	Belt color	Pin
PP	White - blue	PP
POM	White - blue - gray	PA

Other materials and colors are available upon request.

Belt material	Pin material	Belt performance [N/m]	Temperature range [°C]	Certification	Weight [kg/m ²]
PP	PP	38000	+5 ÷ +90	FDA - EU	7,8
PE	PE	24000	-73 ÷ +66	FDA - EU	8,6
POM	POM	55000	-43 ÷ +70	FDA - EU	12,2
POM	PA	57000	-40 ÷ +80	FDA - EU	12,2

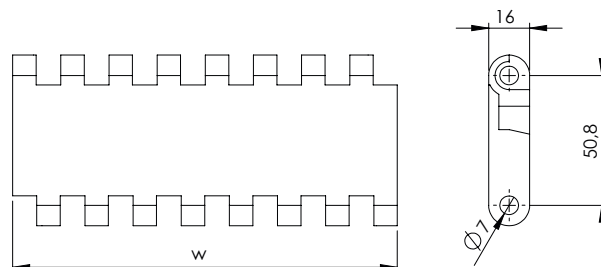
PP = Polypropylene - PE = Polyethylene - POM = Acetal Resin - PA = Polyamide



Belt width [W]

Minimum [mm]	Standard increment [mm]	Special increment [mm]	Width tolerance* [mm]
150	Multiple: 75	Multiple: 18,75	+/-2 up to 300
			+/-3 up to 600
			+/-4 more than 600

**It is advisable to consider dimensional variations in width based on operating temperatures and humidity when the belt is made of polyamide.*



Part number

NMMD 508 C -PP -W

Type _____

Pitch _____

Closed flat top surface _____

Belt color: W = white / B = blue _____

Belt material:
 PO = POM - Acetal Resin / PP = Polypropylene
 PE = Polyethylene / PA = Polyamide _____

PITCH 50,8 mm / 2"

Belt type: open flat surface
Pin diameter: Ø 7 mm
Open area: 25%
Hole openings: 2x8 - 2x12
Minimum width: 150 mm
Thickness: 16 mm
Accessories: flights
Food Certification: FDA - EU



Standard executions

Belt material	Belt color	Pin
PP	White - blue	PP
POM	White - blue	PA

Other materials and colors are available upon request.

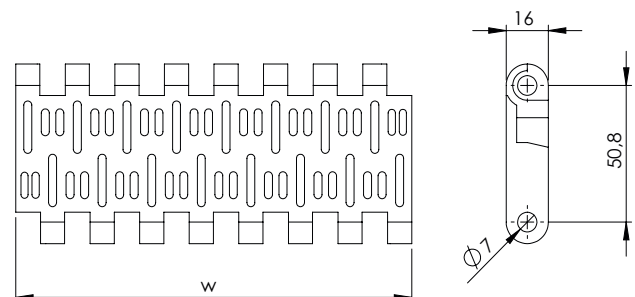
Belt material	Pin material	Belt performance [N/m]	Temperature range [°C]	Certification	Weight [kg/m ²]
PP	PP	36000	+5 ÷ +90	FDA - EU	7,3
PE	PE	23000	-73 ÷ +66	FDA - EU	8,1
POM	POM	53000	-43 ÷ +70	FDA - EU	11,5
POM	PA	55000	-40 ÷ +80	FDA - EU	11,5

PP = Polypropylene - PE = Polyethylene - POM = Acetal Resin - PA = Polyamide

Belt width [W]

Minimum [mm]	Standard increment [mm]	Special increment [mm]	Width tolerance* [mm]
150	Multiple: 75	Multiple: 18,75	+/-2 up to 300
			+/-3 up to 600
			+/-4 more than 600

*It is advisable to consider dimensional variations in width based on operating temperatures and humidity when the belt is made of polyamide.



Part number	NMMD 508 P25 -PO -W	
Type	Belt color: W = white / B = blue	
Pitch	Belt material: PO = POM - Acetal Resin / PP = Polypropylene PE = Polyethylene / PA = Polyamide	
Open flat surface at 25%		

NMMD508FG

PITCH 50,8 mm / 2''

STRAIGHT MODULAR BELTS

Belt type: open flat surface flush grid

Pin diameter: Ø 7 mm

Open area: 37%

Hole openings: 20x7 - 9x7 mm

Minimum width: 150 mm

Thickness: 16 mm

Accessories: flights

Food Certification: FDA - EU

Standard executions

Belt material	Belt color	Pin
PP	White - blue	PP
POM	White - blue	PA

Other materials and colors are available upon request.

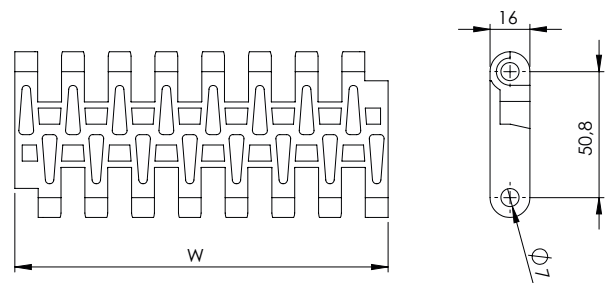
Belt material	Pin material	Belt performance [N/m]	Temperature range [°C]	Certification	Weight [kg/m ²]
PP	PP	35000	+5 ÷ +90	FDA - EU	7,2
PE	PE	22000	-73 ÷ +66	FDA - EU	7,9
POM	POM	51000	-43 ÷ +70	FDA - EU	11,2
POM	PA	52000	-40 ÷ +80	FDA - EU	11,2

PP = Polypropylene - PE = Polyethylene - POM = Acetal Resin - PA = Polyamide

Belt width [W]

Minimum [mm]	Standard increment [mm]	Special increment [mm]	Width tolerance* [mm]
150	Multiple: 75	Multiple: 18,75	+/-2 up to 300
			+/-3 up to 600
			+/-4 more than 600

*It is advisable to consider dimensional variations in width based on operating temperatures and humidity when the belt is made of polyamide.



Part number

NMMD 508 FG -PP -W

Type

Pitch

Open flat surface flush grid

Belt color: W = white / B = blue

Belt material:
PO = POM - Acetal Resin / PP = Polypropylene
PE = Polyethylene / PA = Polyamide

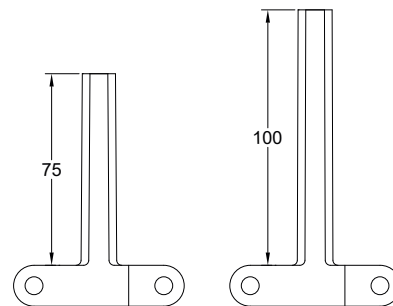
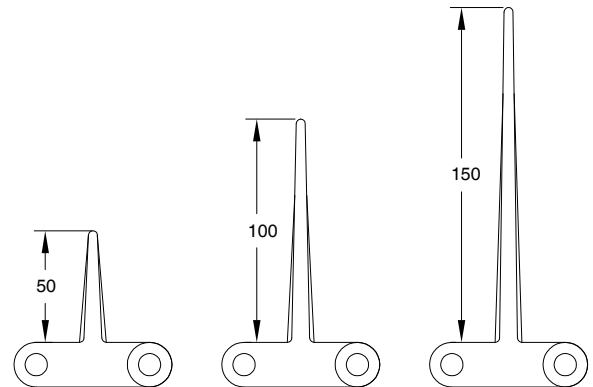
Accessories for MD508 type

Flights

Heavy load design



No cling execution



In case of need of flights the following table shows the standard indent. it is possible to have a special indent according to specific customer request.



Standard indent [mm]	Z	37,5	56	75

In the case of wide belts, one or more gaps is recommended between flights to allow the belt to be supported on the return path. The maximum width not supported by guides depends on several factors such as the load on the belt, possible incline of the conveyor, and belt or pin material.

Sprockets for MD508 type

STRAIGHT MODULAR BELTS



Teeth nr.	Dp [mm]	Do [mm]	A [mm]	B [mm]	Available standard bore	
					Square [mm]	Ø round + set-screw UNI
6	72,33	88	40	7	40x40	25 - 30
8	107,12	123	40	7	40x40	25 - 30
10	141,00	157	40	7	40x40/60x60	30
12	174,33	190	40	7	40x40/60x60	30

Standard material: nylon PA6 fiberglass.
 It is possible to supply sprocket with any number of teeth or any material by CNC machining
 Dp = Pitch diameter
 Do = External tooth diameter

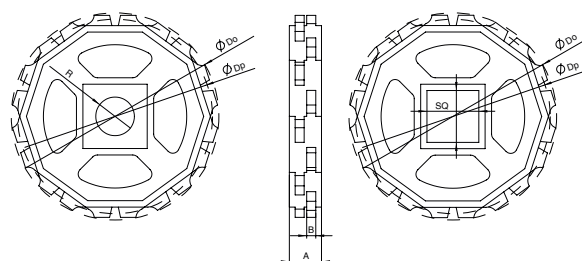
Part number NSMD508C -Q 40 -Z12

Type _____

Bore type: R = round / Q = square _____

Bore dimension (mm) _____

Teeth nr. _____

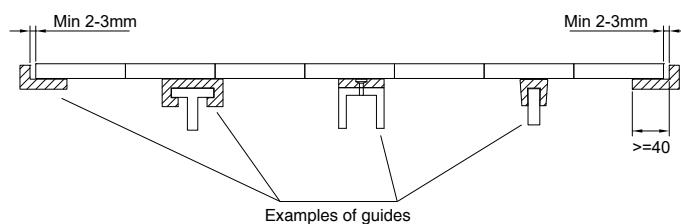


Belt width [mm]		150	300	450	600	750	900	1050	1200	1350	1500	1650	1800	1950	
Number of sprockes	Drive shaft	Belt tension ≤ 50% of the capacity	2	3	4	6	7	9	10	12	13	15	16	18	19
		Belt tension = 100% of the capacity	2	4	6	8	10	12	14	16	18	20	22	24	26
Driven shaft		2	2	2	4	4	6	6	8	8	10	10	12	12	
Sliding guides		2	3	4	4	5	6	6	7	7	8	9	10	11	

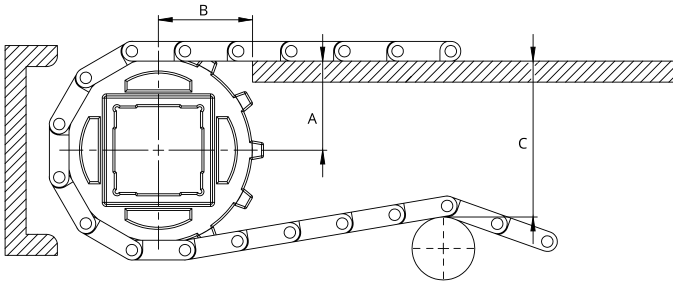
Belt width [mm]		2100	2250	2400	2550	2700	
Number of sprockes	Drive shaft	Belt tension ≤ 50% of the capacity	21	22	24	25	27
		Belt tension = 100% of the capacity	28	30	32	34	36
Driven shaft		14	14	16	16	18	
Sliding guides		12	13	14	14	15	

Mounting

When mounting the sprockets, make sure that you have mounted all sprockets oriented in the same phase.
 Only axially lock the central sprocket and leave the other sprockets free to move axially.



Sprockets for MD508 type

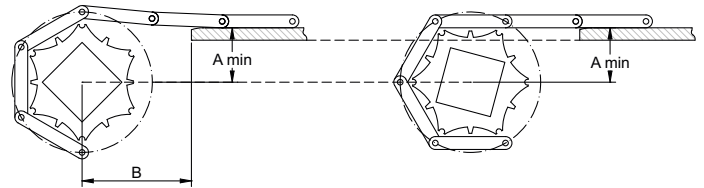
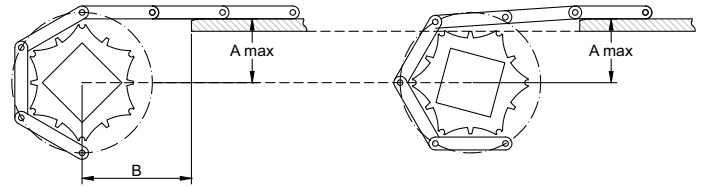


Type	Teeth nr.	A _{max} [mm]	A _{min} [mm]	B1 [mm]	B2 [mm]	C _{max} [mm]
NMMD254C NMMD254FG	6	47	37	54	56	80
	8	61	55	62	56	110
	10	77	72	66	56	150
	12	92	88	73	56	180

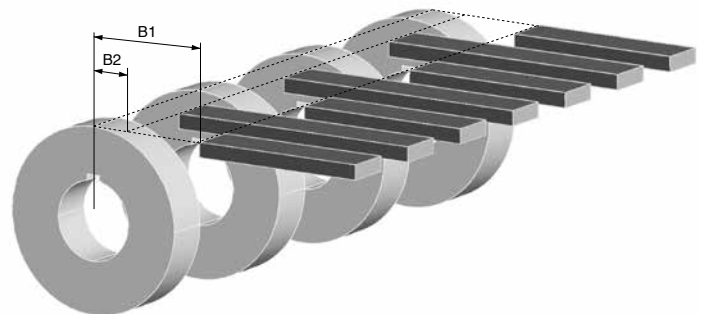
A_{max} = sliding surface position so that the height of the belt engaging the sprocket oscillates between the sliding surface height and a lower one. The height variation depends on the number of teeth and the pitch of the sprocket.

A_{min} = sliding surface position so that the height of the belt engaging the sprocket oscillates between the sliding surface height and a higher one. The height variation depends on the number of teeth and the pitch of the sprocket.

The choice of A dimensions depends on the items you have to carry. it is always suggested to make a chamfer at the end of the sliding guides.



In order to avoid any subsidence of the belt in the area between the guiding strip and the sprockets, it is possible to locate the guides between the sprockets. Two minimum B1 and B2 dimensions are defined.



NMHP508C

PITCH 50,8 mm / 2"

STRAIGHT MODULAR BELTS

- Belt type:** closed flat top surface
- Pin diameter:** Ø 7 mm
- Open area:** 0%
- Hole openings:** -
- Minimum width:** 152,4 mm
- Thickness:** 16 mm
- Accessories:** -
- Food Certification:** FDA - EU



Standard executions

Belt material	Belt color	Pin
PP	White - blue	PP
PE	White - blue	POM
POM	White - blue - gray	PA

Other materials and colors are available upon request.



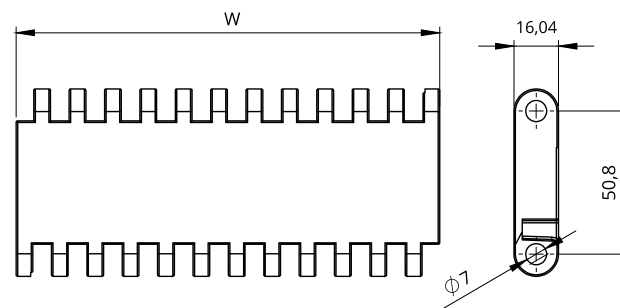
Belt material	Pin material	Belt performance [N/m]	Temperature range [°C]	Certification	Weight [kg/m²]
PP	PP	26970	+5 ÷ +90	FDA - EU	7,8
PE	PE	24080	-73 ÷ +66	FDA - EU	8,6
POM	POM	40600	-43 ÷ +70	FDA - EU	12,2
POM	PA	43400	-40 ÷ +80	FDA - EU	12,0
POM	PP	35300	+5 ÷ +70	FDA - EU	12,0

PP = Polypropylene - PE = Polyethylene - POM = Acetal Resin - PA = Polyamide

Belt width [W]

Minimum [mm]	Standard increment [mm]	Special increment [mm]	Width tolerance* [mm]
152,4	Multiple: 76,2	Multiple: 38,1	+/-2 up to 300
			+/-3 up to 600
			+/-4 more than 600

*It is advisable to consider dimensional variations in width based on operating temperatures and humidity when the belt is made of polyamide.



Part number

NMHP 508 P22 -PO -W

Type _____

Pitch _____

Closed flat top surface _____

Belt color: W = white / B = blue / G = gray

Belt material:
 PO = POM - Acetal Resin / PP = Polypropylene
 PE = Polyethylene / PA = Polyamide

Belt type: open flat surface flush grid

Pin diameter: Ø 7 mm

Open area: 36%

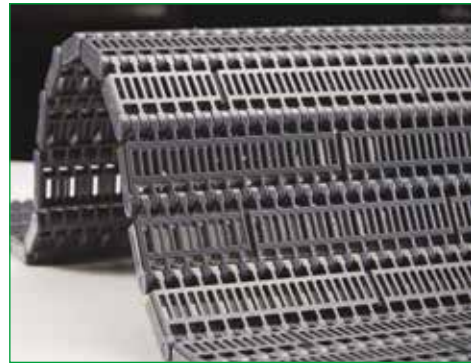
Hole openings: 3,5x18,5 mm

Minimum width: 152,4 mm

Thickness: 16 mm

Accessories: -

Food Certification: FDA - EU



Standard executions

Belt material	Belt color	Pin
PP	Gray	PP
PE	White	POM
POM	Blue	PA

Other materials and colors are available upon request.

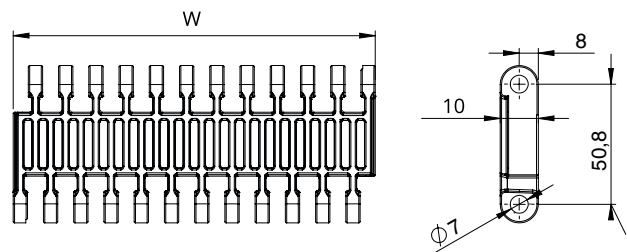
Belt material	Pin material	Belt performance [N/m]	Temperature range [°C]	Certification	Weight [kg/m²]
PP	PP	27000	+5 ÷ +90	FDA - EU	6,7
PE	PE	24000	-73 ÷ +66	FDA - EU	7,4
POM	POM	39500	-43 ÷ +70	FDA - EU	10,9
POM	PA	42000	-43 ÷ +70	FDA - EU	10,6
POM	PP	34000	-43 ÷ +70	FDA - EU	10,6

PP = Polypropylene - PE = Polyethylene - POM = Acetal Resin - PA = Polyamide

Belt width [W]

Minimum [mm]	Standard increment [mm]	Special increment [mm]	Width tolerance* [mm]
152,4	Multiple: 76,2	-	+/-2 up to 300 +/-3 up to 600 +/-4 more than 600

*It is advisable to consider dimensional variations in width based on operating temperatures and humidity when the belt is made of polyamide.



Part number

NMHP 508 FG -PO -W

Type _____
Pitch _____
Open flat surface flush grid

Belt color: W = white / B = blue / G = gray
Belt material:
PO = POM - Acetal Resin / PP = Polypropylene
PE = Polyethylene / PA = Polyamide

NMHP508RR

PITCH 50,8 mm / 2"

STRAIGHT MODULAR BELTS

- Belt type:** open surface rised rib
- Pin diameter:** Ø 7 mm
- Open area:** 36% (max opening 3,5x18,5 mm)
- Surface contact with the product:** 25%
- Minimum width:** 152,4 mm
- Thickness:** 24 mm
- Accessories:** loading and unloading comb
- Food Certification:** FDA - EU



Standard executions

Belt material	Belt color	Pin
PPH	Gray	PPH

Other materials and colors are available upon request.

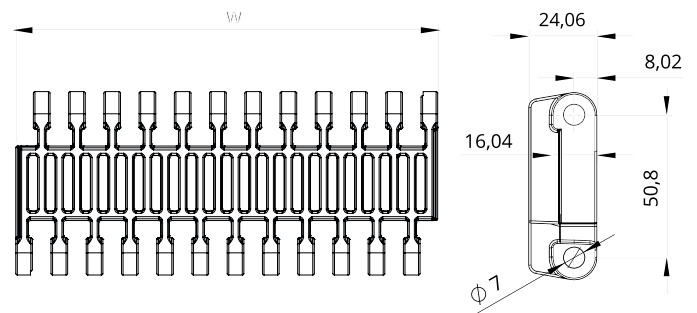
Belt material	Pin material	Belt performance [N/m]	Temperature range [°C]	Certification	Weight [kg/m²]
PPH	PPH	26050	+15 ÷ +105	FDA - EU	8,9
POM	POM	39500	-43 ÷ +70	FDA - EU	13,5
POM	PA	42200	-40 ÷ +80	FDA - EU	13,2
POM	PP	34350	+5 ÷ +70	FDA - EU	13,2

PPH = Polypropylene for high temperature - PE = Polyethylene
 POM = Acetal Resin - PA = Polyamide

Belt width [W]

Minimum [mm]	Standard increment [mm]	Special increment [mm]	Width tolerance* [mm]
152,4	Multiple: 76,2	-	+/-2 up to 300
			+/-3 up to 600
			+/-4 more than 600

*It is advisable to consider dimensional variations in width based on operating temperatures and humidity when the belt is made of polyamide.



Part number

NMHP 508 RR -PH -G

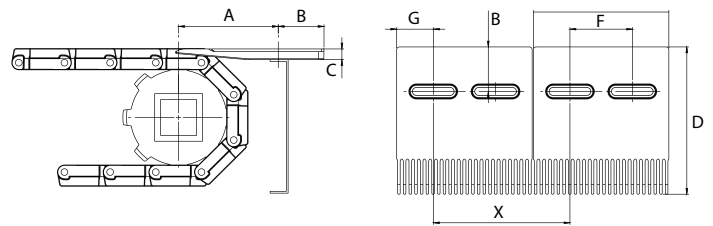
Type _____
 Pitch _____
 Open surface rised rib

Belt color: G = gray

Belt material:
 PO = POM - Acetal Resin / PP = Polypropylene / PA = Polyamide
 PH = Polypropylene for high temperature

Accessories for NMHP508RR type

Comb for NMHP508RR type



Quote [mm]	A	B	C	D	E	F	G	X
	105-115	25	12,5	146	150	75	37,5	155

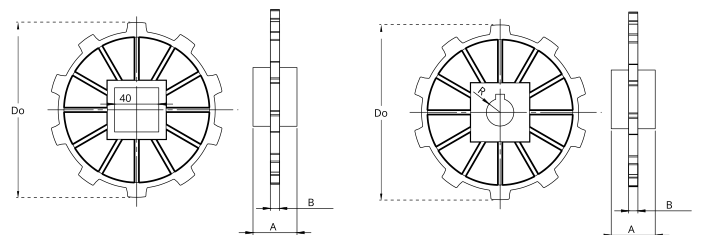
Sprockets for HP508 type



Teeth nr.	Dp [mm]	Do [mm]	A [mm]	B [mm]	Available standard bore	
					Square [mm]	Ø round + set-screw UNI
6	101,6	94,6	40	8,5	40x40	20 - 25 - 30
8	132,7	125,0	40	8,5	40x40	20 - 25 - 30
10	164,4	159,0	40	8,5	40x40	20 - 25 - 30
12	196,3	192,0	40	8,5	40x40	20 - 25 - 30

Standard material: nylon PA6 fiberglass.

It is possible to supply sprocket with any number of teeth or any material by CNC machining



Part number NSHP508 -R 25 -Z6

Type _____

Bore type: R = round / Q = square _____

Bore dimension (mm) _____

Teeth nr. _____

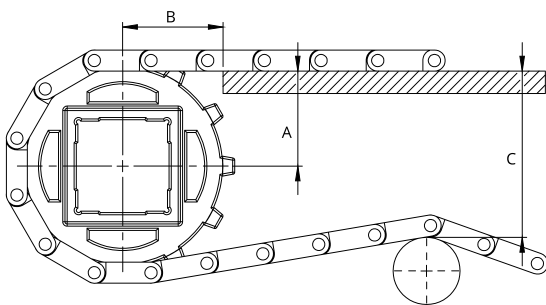
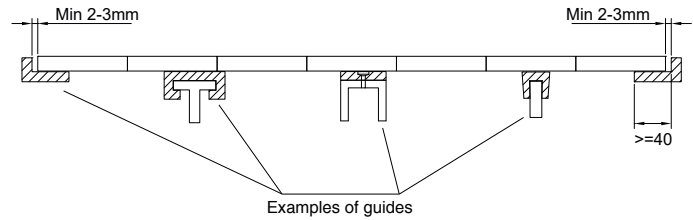
Belt width [mm]			152,4	228,6	304,8	381	457,2	533,4	609,6	685,8	762	838,2	914,4	990,6	1066,8	1143	1219,2	1295,4	1371,6	1447,8
Number of sprockets	Drive shaft	Belt tension ≤ 50% of the capacity	2	2	2	3	3	4	4	5	5	5	6	6	7	7	8	8	9	9
		Belt tension = 100% of the capacity	1	2	3	4	5	6	7	8	9	10	11	12	13	14	15	16	17	18
	Driven shaft	2	2	2	3	3	3	3	3	3	4	4	4	4	5	5	6	6	6	7
Sliding guides			2	2	3	3	3	4	4	4	5	5	5	5	6	6	6	7	7	7

Belt width [mm]			1524	1600,2	1676,4	1752,6	1828,8	1905	1981,2	2057,4	2133,6	2209,8	2286	2514,6	2743,2	2971,8	3200,4	3429	3657,6	3810
Number of sprockets	Drive shaft	Belt tension ≤ 50% of the capacity	9	10	10	11	11	12	12	13	13	13	14	15	17	18	19	21	22	23
		Belt tension = 100% of the capacity	19	20	20	21	22	23	24	25	26	27	28	31	34	37	40	42	45	47
	Driven shaft	7	7	8	8	9	9	9	9	10	10	10	11	11	12	13	14	15	16	17
Sliding guides			8	8	8	9	9	9	9	10	10	10	11	12	12	13	14	15	16	17

Sprockets for HP508 type

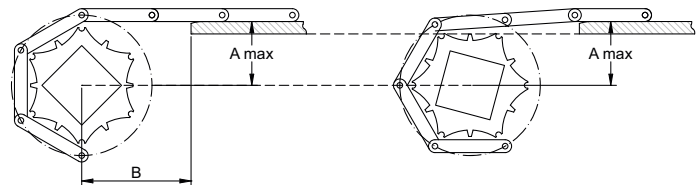
Mounting

When mounting the sprockets, make sure that you have mounted all sprockets oriented in the same phase.
Only axially lock the central sprocket and leave the other sprockets free to move axially.

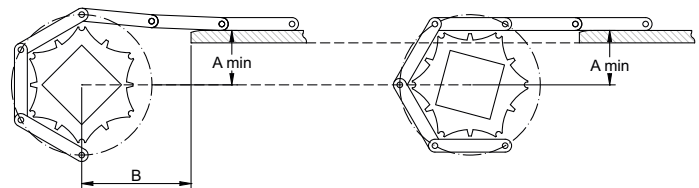


Teeth nr.	A _{max} [mm]	A _{min} [mm]	B1 [mm]	B2 [mm]	C _{max} [mm]
6	42,0	38,0	54	56	89
8	58,0	56,0	62	56	122
10	74,0	72,5	66	56	155
12	90,5	89,0	73	56	187

A_{max} = sliding surface position so that the height of the belt engaging the sprocket oscillates between the sliding surface height and a lower one. The height variation depends on the number of teeth and the pitch of the sprocket.



A_{min} = sliding surface position so that the height of the belt engaging the sprocket oscillates between the sliding surface height and a higher one. The height variation depends on the number of teeth and the pitch of the sprocket.



The choice of A dimensions depends on the items you have to carry.
it is always suggested to make a chamfer at the end of the sliding guides.

In order to avoid any subsidence of the belt in the area between the guiding strip and the sprockets, it is possible to locate the guides between the sprockets. Two minimum B1 and B2 dimensions are defined.

